

LOC/DME I-YKM <b>110.1</b> Chan <b>38</b>	APP CRS <b>094°</b>	Rwy Idg TDZE Apt Elev <b>1099</b>	N/A N/A <b>1099</b>
---	------------------------	--------------------------------------	---------------------------

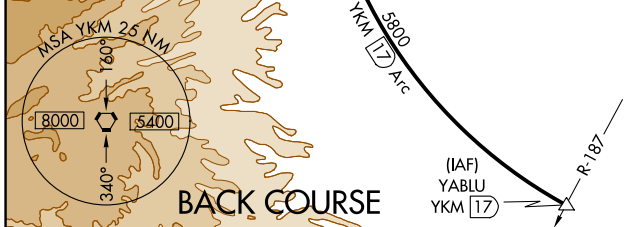
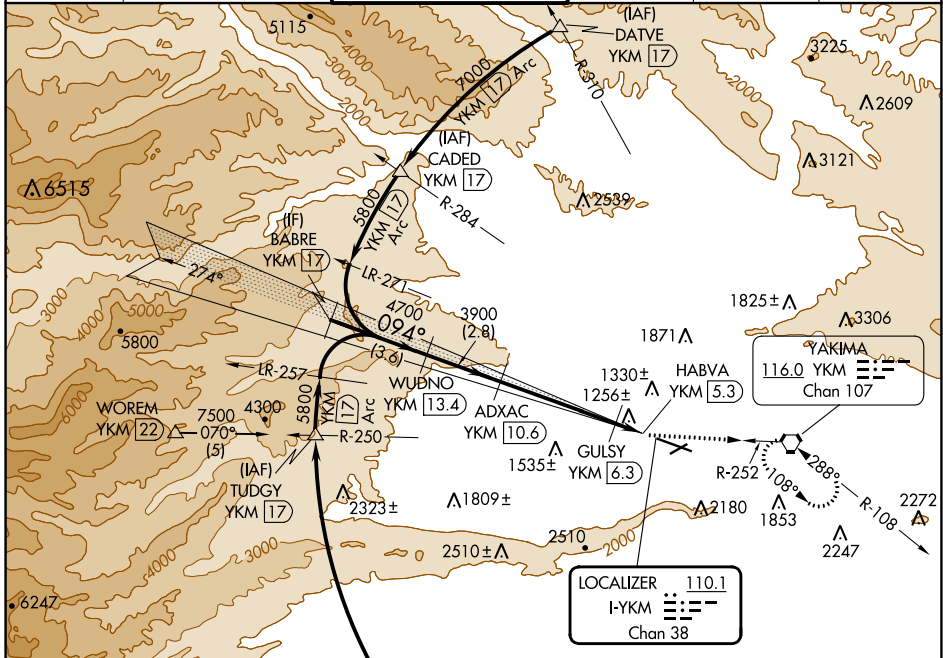
# LOC/DME BC-B

YAKIMA AIR TRML/MCALLISTER FLD (YKM)

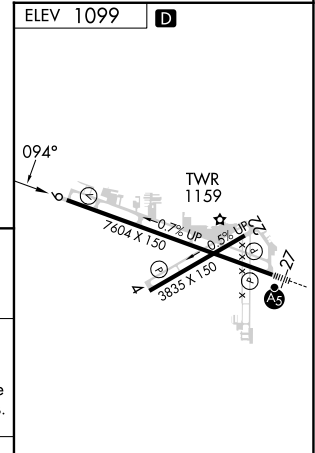
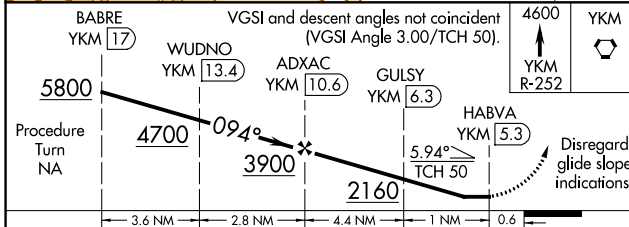
**⚠** Simultaneous reception of I-YKM and YKM DME required.  
**⚠** Circling NA south of Rwy 9-27.  
 When local altimeter setting not received, procedure NA.

MISSED APPROACH: Climb to 4600 via YKM VORTAC  
 R-252 to YKM VORTAC and hold, continue climb-in-hold to 4600.

ATIS <b>125.25</b>	SPOKANE APP CON* <b>123.8 263.15</b>	YAKIMA TOWER* <b>133.25</b> (CTAF) <b>0 257.8</b>	GND CON <b>121.9</b>	CLNC DEL <b>121.9</b>	UNICOM <b>122.95</b>
-----------------------	---	--	-------------------------	--------------------------	-------------------------



## BACK COURSE



CATEGORY	A	B	C	D
<b>C</b> CIRCLING	1760-1	661 (700-1)	1940-2½ 841 (900-2½)	2280-3 1181 (1200-3)

MIRL Rwy 4-22  
 HIRL Rwy 9-27  
 REIL Rws 4, 9, and 22

# LOC/DME BC-B

NW-1, 22 FEB 2024 to 21 MAR 2024

NW-1, 22 FEB 2024 to 21 MAR 2024