

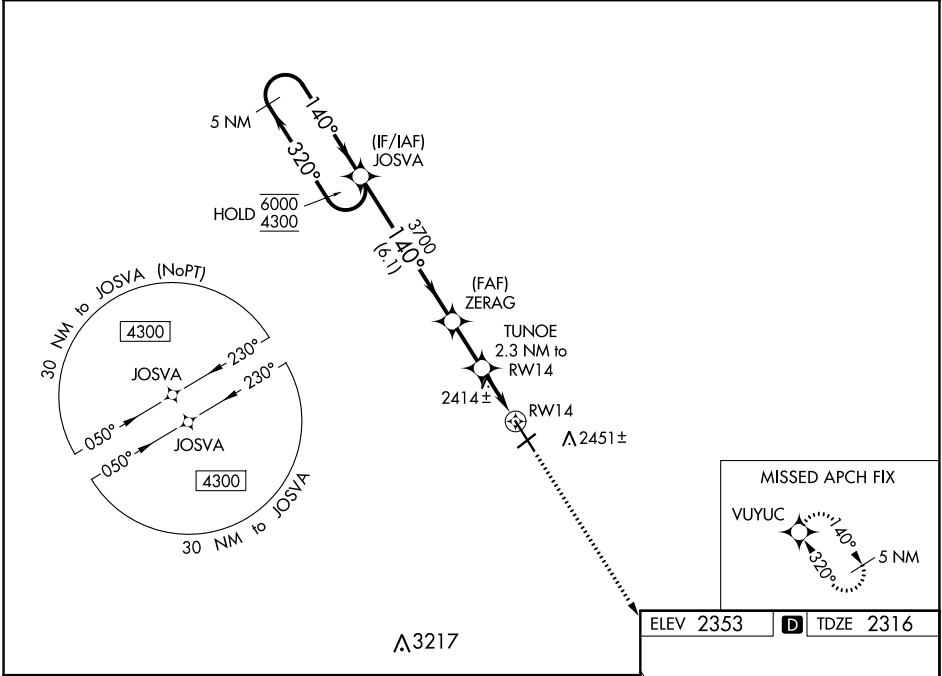
WAAS CH 40143 W14A	APP CRS 140°	Rwy Idg TDZE Apt Elev	7503 2316 2353
--	------------------------	-----------------------------	---

RNAV (GPS) RWY 14

WILLISTON BASIN INTL (XWA)

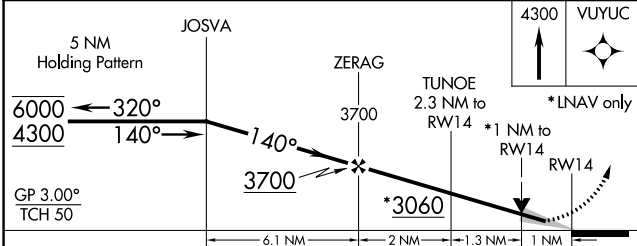
RNP APCH.	MISSED APPROACH: Climb to 4300 direct VUYUC and hold.
<p>▼</p> <p>▲</p> <p>For uncompensated Baro-VNAV systems, LNAV/VNAV NA below -19°C or above 54°C.</p>	

ASOS 125.925	SALT LAKE CITY CENTER 126.85 305.2	UNICOM 122.8 (CTAF) 0
------------------------	--	---------------------------------



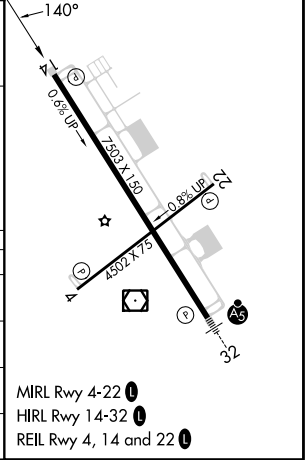
NC-1, 22 FEB 2024 to 21 MAR 2024

NC-1, 22 FEB 2024 to 21 MAR 2024



ELEV 2353	D TDZE 2316
-----------	-------------

CATEGORY	A	B	C	D
LPV DA		2516-3/4	200 (200-3/4)	
LNAV/VNAV DA		2577-7/8	261 (300-7/8)	
LNAV MDA		2680-1	364 (400-1)	
CIRCLING	2760-1 407 (500-1)	2820-1 467 (500-1)	2820-1 1/2 467 (500-1 1/2)	2920-2 567 (600-2)



MIRL Rwy 4-22 0
HIRL Rwy 14-32 0
REIL Rwy 4, 14 and 22 0