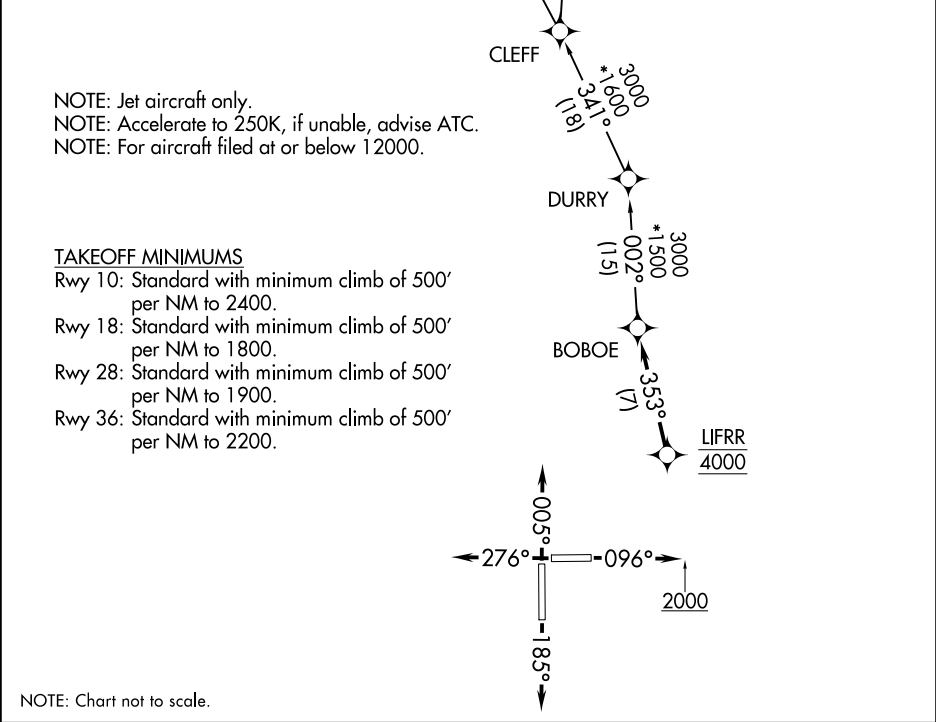


TOP ALTITUDE:
ASSIGNED BY ATC

RNAV 1 - DME/DME/IRU or GPS.

RADAR required.

AWOS-3
118.375
CTAF
122.8
MIAMI DEP CON
125.5 354.1



DEPARTURE ROUTE DESCRIPTION

TAKEOFF RUNWAY 10: Climb on heading 096° to 2000, then as assigned by ATC for vectors to cross LIFRR at 4000, thence. . .
TAKEOFF RUNWAY 18: Climb on heading 185° or as assigned by ATC for vectors to cross LIFRR at 4000, thence. . .
TAKEOFF RUNWAY 28: Climb on heading 276° or as assigned by ATC for vectors to cross LIFRR at 4000, thence. . .
TAKEOFF RUNWAY 36: Climb on heading 005° or as assigned by ATC for vectors to cross LIFRR at 4000, thence. . .
...on track 353° to BOBOE, then on assigned transition, maintain ATC assigned altitude, expect clearance to filed altitude within 10 minutes after departure.

BAIRN TRANSITION (LIFRR1.BAIRN)
WIXED TRANSITION (LIFRR1.WIXED)