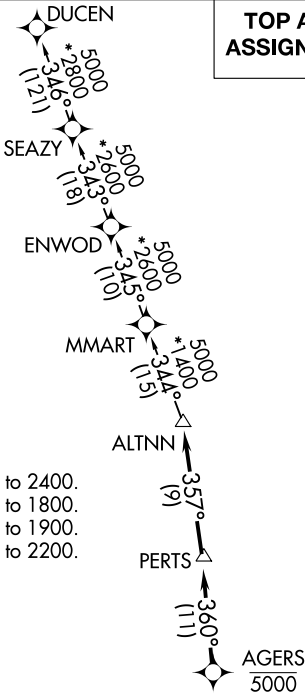


AWOS-3
118.375
CTAF
122.8
MIAMI DEP CON
125.5 354.1

RNAV 1 - DME/DME/IRU or GPS.
RADAR required.

TOP ALTITUDE:
ASSIGNED BY ATC



TAKEOFF MINIMUMS

- Rwy 10: Standard with minimum climb of 500' per NM to 2400.
- Rwy 18: Standard with minimum climb of 500' per NM to 1800.
- Rwy 28: Standard with minimum climb of 500' per NM to 1900.
- Rwy 36: Standard with minimum climb of 500' per NM to 2200.

NOTE: Jet aircraft only.
NOTE: Accelerate to 250K, if unable, advise ATC.

NOTE: Chart not to scale.



DEPARTURE ROUTE DESCRIPTION

- TAKEOFF RUNWAY 10: Climb on heading 096° to 2000, then as assigned for RADAR vectors to cross AGERS at 5000, thence. . . .
- TAKEOFF RUNWAY 18: Climb on heading 185° or as assigned for RADAR vectors to cross AGERS at 5000, thence. . . .
- TAKEOFF RUNWAY 28: Climb on heading 276° or as assigned for RADAR vectors to cross AGERS at 5000, thence. . . .
- TAKEOFF RUNWAY 36: Climb on heading 005° or as assigned for RADAR vectors to cross AGERS at 5000, thence. . . .

. . . . on track 360° to PERTS, then on track 357° to ALTNN, then on assigned transition, maintain ATC assigned altitude, expect filed altitude within 10 minutes after departure.

DUCEN TRANSITION (ALTNN1.DUCEN)

SE-3, 22 FEB 2024 to 21 MAR 2024

SE-3, 22 FEB 2024 to 21 MAR 2024