

WAAS CH <b>56406</b> <b>W14A</b>	APP CRS <b>142°</b>	Rwy Idg TDZE Apt Elev	<b>4903</b> <b>19</b> <b>20</b>
--	------------------------	-----------------------------	---------------------------------------

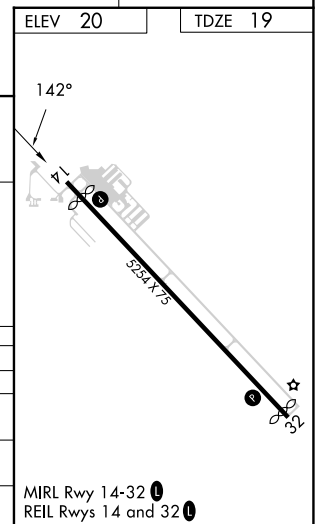
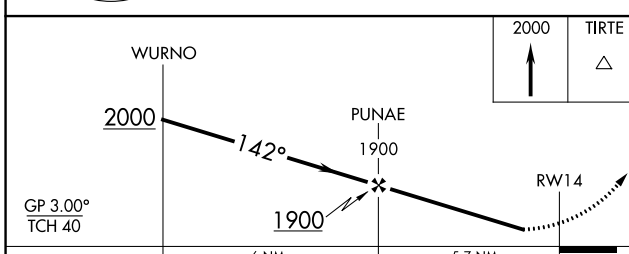
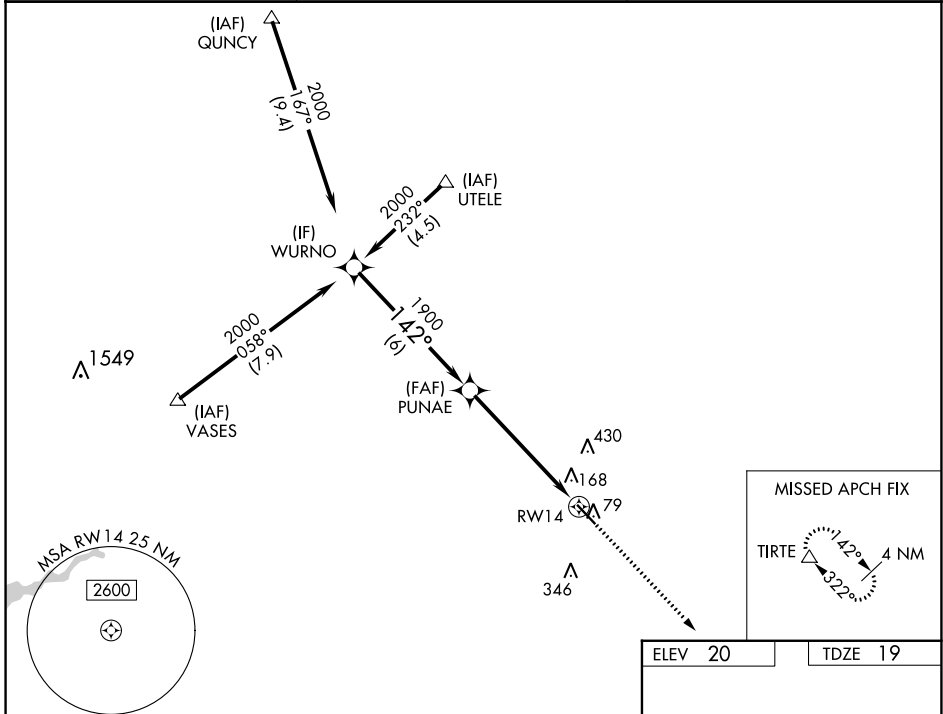
# RNAV (GPS) RWY 14

LA BELLE MUNI (X14)

**Baro-VNAV NA. DME/DME RNP-0.3 NA. Helicopter visibility reduction below 1 SM NA. Use Southwest Florida Intl altimeter setting; when not received use Page Fld altimeter setting and increase all DA 8 feet, all MDA 20 feet and LNAV Cat D visibility ¼ mile.**

**MISSED APPROACH: Climb to 2000 direct TIRTE and hold.**

RSW ASOS <b>124.65</b>	FORT MYERS APP CON <b>126.8</b>	UNICOM <b>122.8 (CTAF) 0</b>
---------------------------	------------------------------------	---------------------------------



CATEGORY	A	B	C	D
LPV DA	388-1¼		369 (400-1¼)	
LNAV/VNAV DA	565-2		546 (600-2)	
LNAV MDA	520-1	501 (500-1)	520-1½	501 (500-1½)
CIRCLING	580-1	560 (600-1)	800-2¼ 780 (800-2¼)	800-2½ 780 (800-2½)

SE-3, 22 FEB 2024 to 21 MAR 2024

SE-3, 22 FEB 2024 to 21 MAR 2024

APP CRS <b>322°</b>	Rwy Idg TDZE Apt Elev	<b>5125</b> <b>20</b> <b>20</b>
------------------------	-----------------------------	---------------------------------------

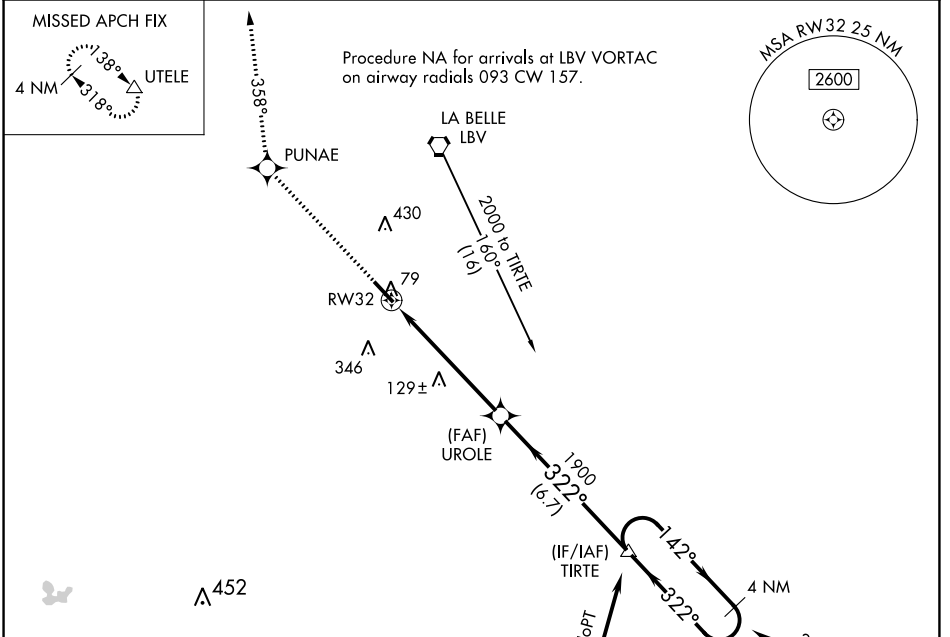
# RNAV (GPS) RWY 32

LA BELLE MUNI (X14)

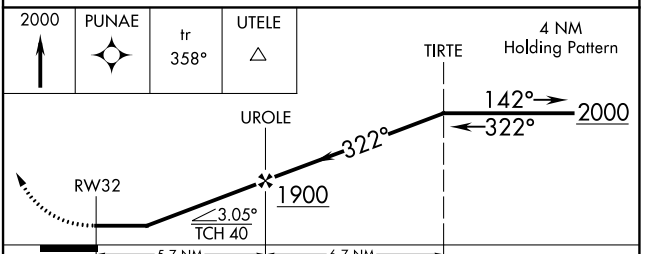
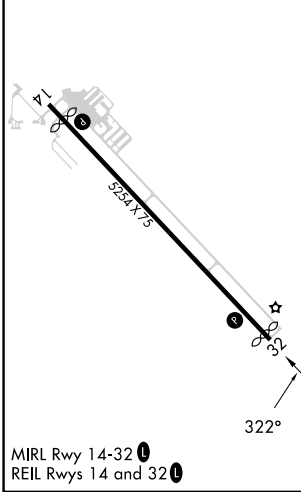
**⚠ NA** DME/DME RNP-0.3 NA. Helicopter visibility reduction below  $\frac{3}{4}$  SM NA. Use Southwest Florida Intl altimeter setting; when not received, use Page Fld altimeter setting and increase all MDAs 20 feet.

**MISSED APPROACH:** Climb to 2000 direct PUNAE then via 358° track to UTELE and hold.

RSW ASOS <b>124.65</b>	FORT MYERS APP CON <b>126.8</b>	UNICOM <b>122.8</b> (CTAF) <b>0</b>
---------------------------	------------------------------------	--



ELEV 20	TDZE 20
---------	---------



CATEGORY	A	B	C	D
LNAV MDA	480-1	460 (500-1)	480-1½ 460 (500-1½)	480-1½ 460 (500-1½)
CIRCLING	580-1	560 (600-1)	800-2¼ 780 (800-2¼)	800-2½ 780 (800-2½)

SE-3, 22 FEB 2024 to 21 MAR 2024

SE-3, 22 FEB 2024 to 21 MAR 2024