

WAAS CH <b>87137</b> <b>W31B</b>	APP CRS <b>306°</b>	Rwy ldg <b>2755</b> TDZE <b>160</b> Apt Elev <b>162</b>
--	------------------------	---

# RNAV (GPS) RWY 31

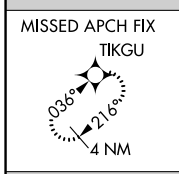
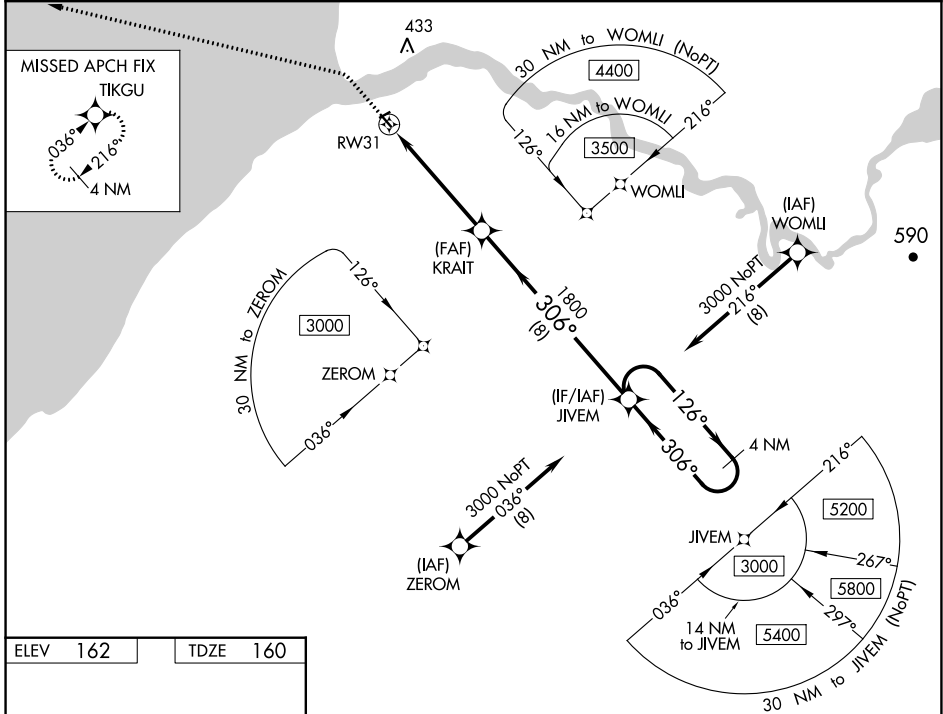
SOUTH NAKNEK NR 2 (WSN)(PFWS)

RNP APCH.

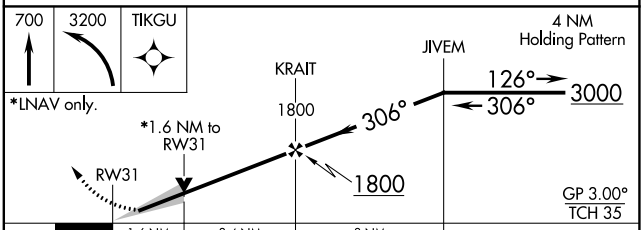
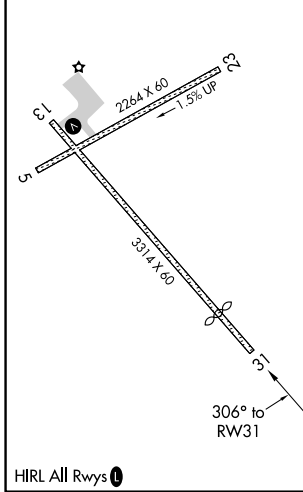
▼ Baro-VNAV and VDP NA when using King Salmon altimeter setting. For uncompensated Baro-VNAV systems, LNAV/VNAV NA below -21°C or above 54°C. When local altimeter setting not received, use King Salmon altimeter setting and increase all DA/MDA 40 feet. Circling Rwy 5 NA at night.

MISSED APPROACH: Climb to 700 then climbing left turn to 3200 direct TIKGU and hold.

AWOS-3P <b>121.575</b>	ANCHORAGE CENTER <b>124.8 354.0</b>	CTAF <b>122.9</b>
---------------------------	--	----------------------



ELEV 162	TDZE 160
----------	----------



CATEGORY	A	B	C	D
LPV DA	410-1	250 (300-1)		NA
LNAV/VNAV DA	410-1	250 (300-1)		NA
LNAV MDA	700-1	540 (600-1)		NA
<b>C</b> CIRCLING	700-1	538 (600-1)		NA

AK, 25 JAN 2024 to 21 MAR 2024

AK, 25 JAN 2024 to 21 MAR 2024