

APP CRS <b>091°</b>	Rwy Idg <b>4000</b>
	TDZE <b>836</b>
	Apt Elev <b>842</b>

# RNAV (GPS) RWY 9

VINTON VETERANS MEML AIRPARK (VTI)

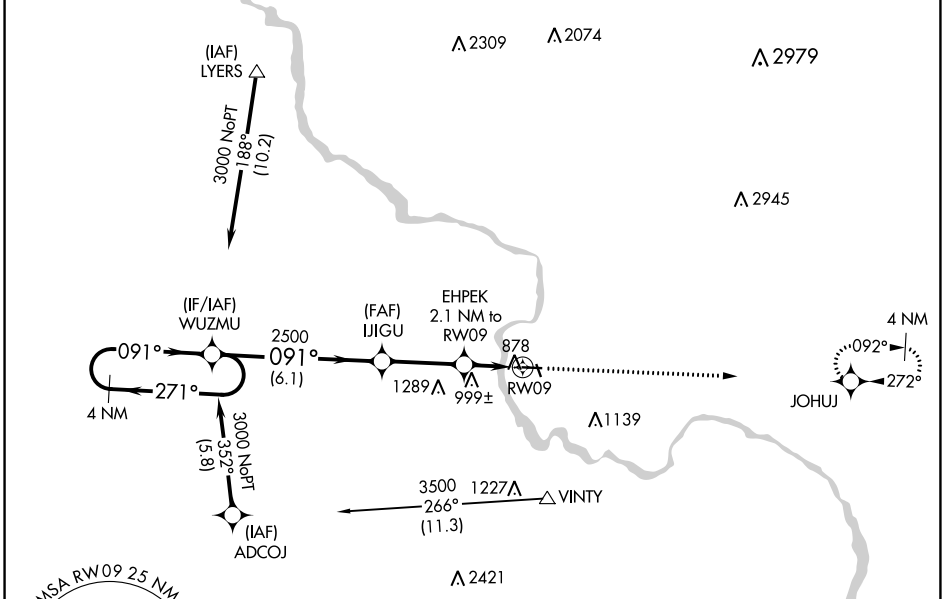
RNP APCH - GPS.

▼ Straight-in Rwy 9/ Circling Rwy 9 at night, operational VGSI required, remain on or above VGSI glidepath until threshold. Rwy 9 helicopter visibility reduction below 1 SM NA.

▲ When local altimeter setting not received, use Independence altimeter setting and increase all MDA 60 feet.

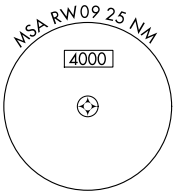
MISSED APPROACH: Climb to 3000 direct JOHUJ and hold.

AWOS-3 <b>120.075</b>	CEDAR RAPIDS APP CON * <b>134.05 266.8</b>	UNICOM <b>122.8 (CTAF)</b>
--------------------------	---	-------------------------------

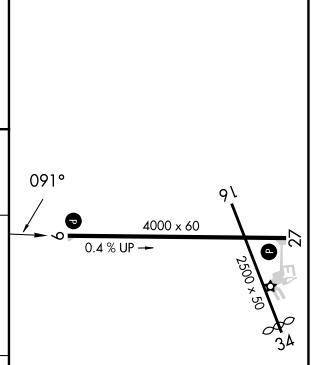
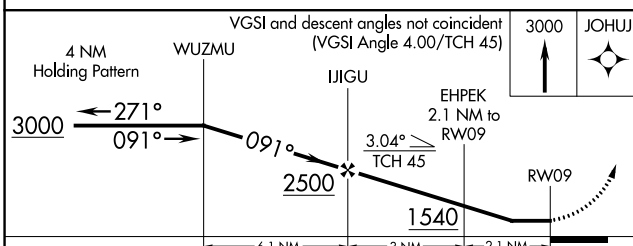


NC-3, 22 FEB 2024 to 21 MAR 2024

NC-3, 22 FEB 2024 to 21 MAR 2024



ELEV 842	TDZE 836
----------	----------



CATEGORY	A	B	C	D
LNVA MDA	1260-1	424 (500-1)		NA
CIRCLING	1320-1 478 (500-1)	1360-1 518 (600-1)		NA

REIL Rwy 9 and 27  
MIRL Rwy 9-27