

| | | |
|--|------------------------|---|
| TACAN NIP Chan 19 (108.2) | APP CRS 269° | Rwy Idg 8003 TDZE 72 Apt Elev 80 |
|--|------------------------|---|

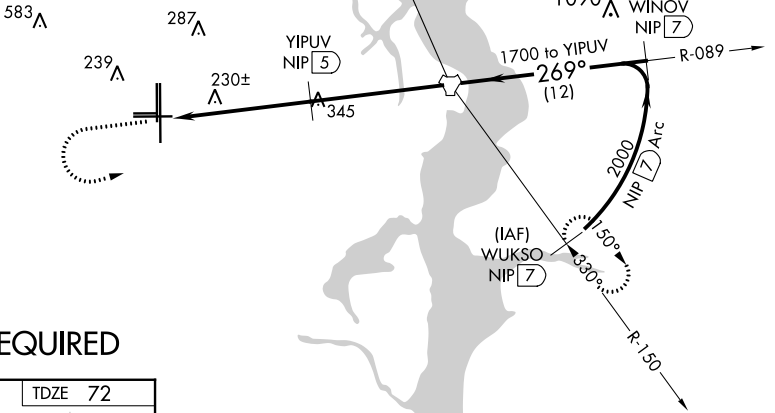
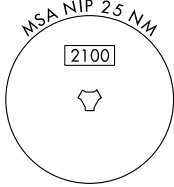
TACAN RWY 27L

CECIL (VQQ)

V VDP NA with Jacksonville Intl altimeter setting. Helicopter visibility reduction below 3/4 SM NA. When local altimeter setting not received, use Jacksonville Intl altimeter setting and increase all MDA 60 feet, increase S-27L Cats C, D, E visibility 1/8 mile.

MISSED APPROACH: Climb to 700 then climbing left turn to 2100 direct NIP TACAN and continue on NIP TACAN R-150 to WUKSO/7 DME and hold.

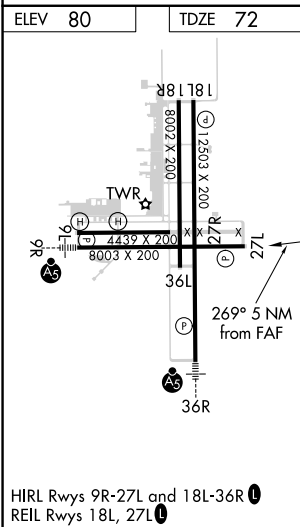
| | | | | | |
|------------------------|--|--|-----------------------------------|-----------------------------------|-----------------------|
| ATIS 125.275 | JACKSONVILLE APP CON 127.775 377.075 | CECIL TOWER* 126.1 (CTAF) 235.625 | GND CON 121.625 226.675 | CLNC DEL 123.975 254.25 | GCO 135.075 |
|------------------------|--|--|-----------------------------------|-----------------------------------|-----------------------|



SE-3, 22 FEB 2024 to 21 MAR 2024

SE-3, 22 FEB 2024 to 21 MAR 2024

RADAR REQUIRED



| | | | | | |
|----------|----------------------|----------------------|------------------------------|----------------------|--|
| 700 | 2100 | NIP | NIP R-150 | WUKSO NIP 7 | VGSI and descent angles not coincident (VGSI Angle 3.00/TCH 67). |
| ↑ | ↩ | ⬡ | ⬡ | ⬡ | |
| | | NIP 10 | NIP 8.8 | YIPUV NIP 5 | NIP TACAN |
| | | | | | WINOV NIP 7 |
| | | | | | 2000 |
| | | | | | 269° |
| | | | | | 1700 |
| | | | | | 2.97° |
| | | | | | TCH 55 |
| | | | | | 1.2 3.8 NM 5 NM 7 NM |
| CATEGORY | A | B | C | D | E |
| S-27L | 540-1 | 468 (500-1) | 540-1 3/8 | 468 (500-1 3/8) | |
| CIRCLING | 540-1 460 (500-1) | 560-1 480 (500-1) | 600-1 1/2 520 (600-1 1/2) | 640-2 560 (600-2) | 900-3 820 (900-3) |