

LOC/DME I-VJI <b>108.3</b> Chan 20	APP CRS <b>241°</b>	Rwy Idg TDZE Apt Elev	<b>4471</b> <b>2087</b> <b>2087</b>
--	------------------------	-----------------------------	---

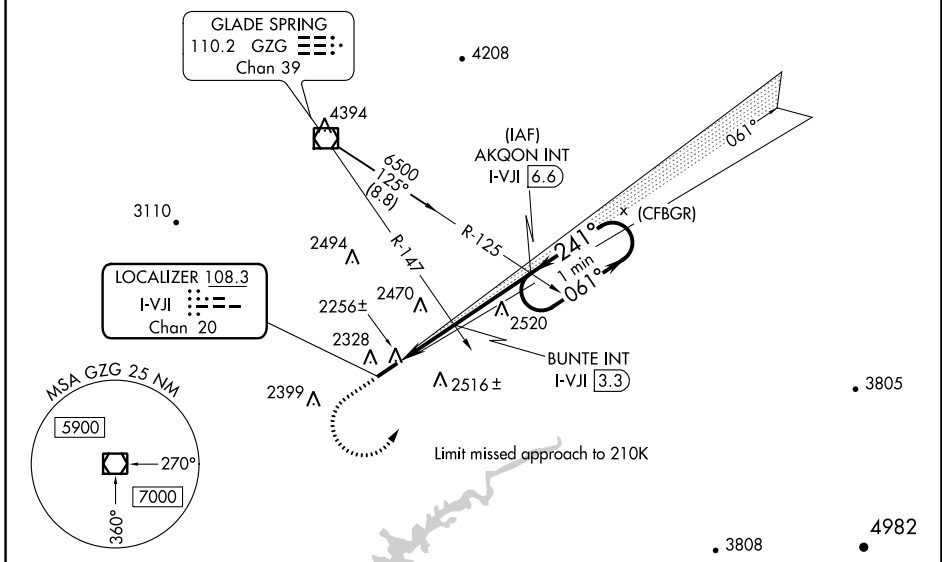
**LOC RWY 24**  
VIRGINIA HIGHLANDS (VJI)

**⚠** Inop table does not apply. GPS required. Cat D Straight-in minima NA when using Tri-Cities altimeter setting. When local altimeter setting not received; use Tri-Cities altimeter setting and increase all MDA 140 feet; and increase S-24 Cat A and B and Circling Cat B visibility ¼ mile, and S-24 Cat C and Circling Cat C visibility ½ mile. Increase BUNTE fix minimums S-24 Cat C visibility ¾ mile, Circling Cats A and B visibility ¼ mile, and Circling Cat C visibility ½ mile. Helicopter visibility reduction below 1 SM NA.



**MISSED APPROACH:** Climb to 3200 then climbing left turn to 4300 direct AKQON INT and hold.

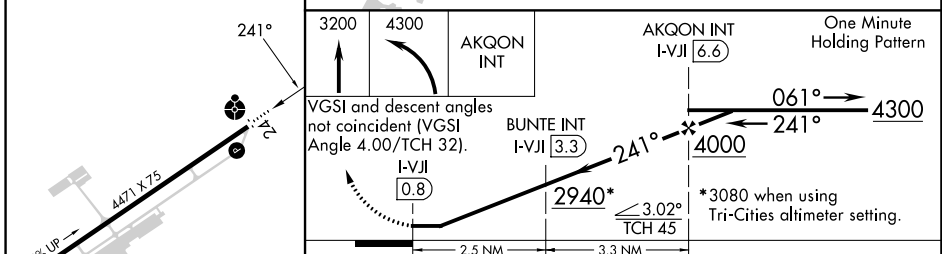
AWOS-3 <b>128.125</b>	TRI-CITY APP CON ★ <b>125.25 349.0</b>	UNICOM <b>122.8(CTAF) 0</b>
--------------------------	---	--------------------------------



NE-3, 22 FEB 2024 to 21 MAR 2024

NE-3, 22 FEB 2024 to 21 MAR 2024

ELEV 2087	TDZE 2087
-----------	-----------



3200	4300	AKQON INT	AKQON INT I-VJI 6.6	One Minute Holding Pattern
VGSI and descent angles not coincident (VGSI Angle 4.00/TCH 32).		BUNTE INT I-VJI 3.3	2940*	4300
		I-VJI 0.8	3020 TCH 45	4000
			*3080 when using Tri-Cities altimeter setting.	

CATEGORY	A	B	C	D
S-24	2940-1 853 (900-1)	2940-1¼ 853 (900-1¼)	2940-2½	853 (900-2½)
<b>C</b> CIRCLING	2940-1¼	853 (900-1¼)	2940-2½ 853 (900-2½)	3080-3 993 (1000-3)
BUNTE FIX MINIMUMS				
S-24	2520-1	433 (500-1)	2520-1¼	433 (500-1¼)
<b>C</b> CIRCLING	2860-1	773 (800-1)	2900-2½ 813 (900-2½)	3080-3 993 (1000-3)

MIRL Rwy 6-24 0  
REIL Rwy 24 0  
FAF to MAP 5.8 NM

Knots	60	90	120	150	180
Min:Sec	5:48	3:52	2:54	2:19	1:56