

APP CRS 329°	Rwy Idg 4004
	TDZE 811
	Apt Elev 811

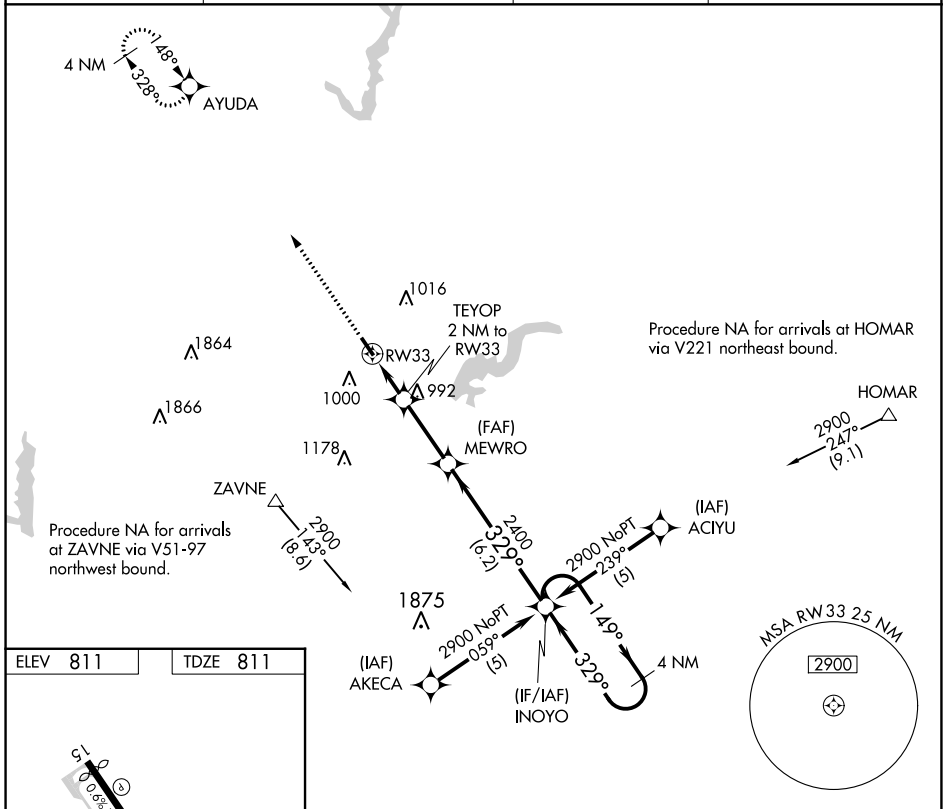
RNAV (GPS) RWY 33

INDIANAPOLIS METRO (UMP)

▽ DME/DME RNP-0.3 NA. When local altimeter setting not received, use Indianapolis Intl altimeter setting and increase all MDA 60 feet and LNAV
△ NA Cat C visibility ¼ mile. VDP NA when using Indianapolis Intl altimeter setting. Rwy 33 helicopter visibility reduction below ¾ SM NA.

MISSED APPROACH: Climb to 2500 direct AYUDA and hold.

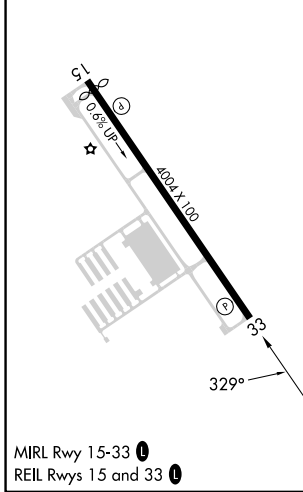
AWOS-3PT 119.375	INDIANAPOLIS APP CON 127.15 317.8	CLNC DEL 121.625	UNICOM 123.0 (CTAF) 0
----------------------------	---	----------------------------	---------------------------------



EC-2, 22 FEB 2024 to 21 MAR 2024

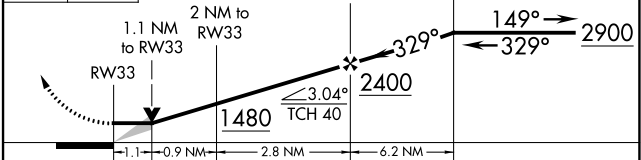
EC-2, 22 FEB 2024 to 21 MAR 2024

ELEV 811	TDZE 811
----------	----------



MIRL Rwy 15-33 **0**
 REIL Rwy 15 and 33 **0**

2500 AYUDA VGSIs and descent angles not coincident (VGSi Angle 3.50/TCH 27). 4 NM Holding Pattern



CATEGORY	A	B	C	D
LNAV MDA	1260-1	449 (500-1)	1260-1¼ 449 (500-1¼)	NA
C CIRCLING	1320-1 509 (600-1)	1340-1 529 (600-1)	1340-1½ 529 (600-1½)	NA