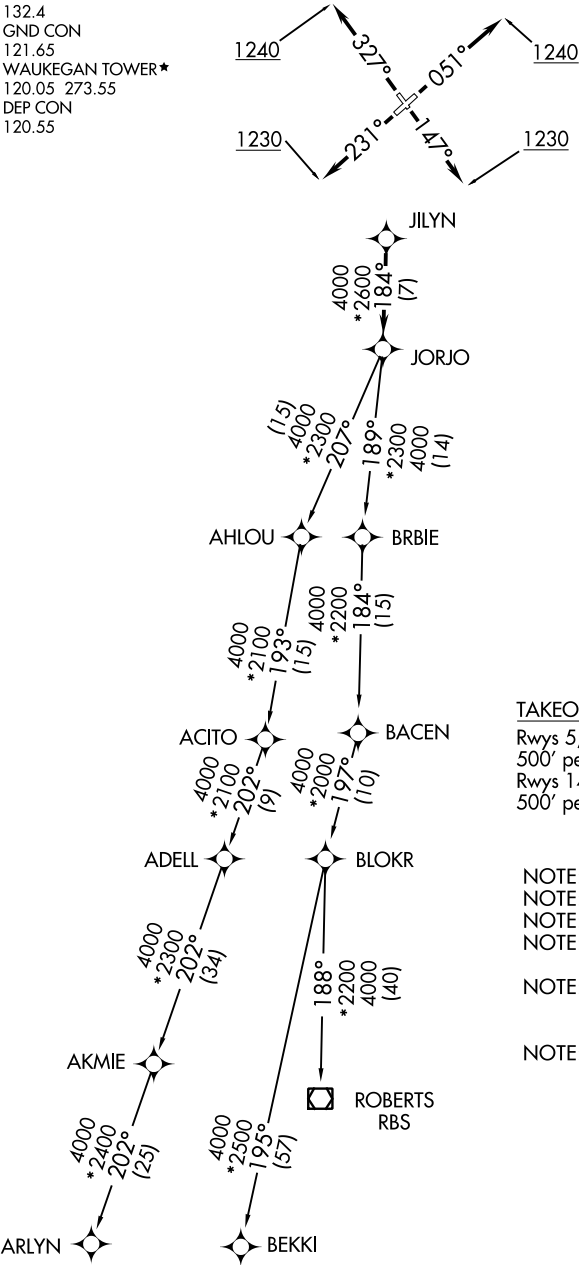


ATIS  
132.4  
GND CON  
121.65  
WAUKEGAN TOWER\*  
120.05 273.55  
DEP CON  
120.55

TOP ALTITUDE:  
3000



TAKEOFF MINIMUMS  
Rwys 5, 32: Standard with minimum climb of 500' per NM to 1240.  
Rwys 14, 23: Standard with minimum climb of 500' per NM to 1230.

NOTE: RNAV 1.  
NOTE: RADAR required.  
NOTE: DME/DME/IRU or GPS required.  
NOTE: TURBOJET departures maintain 250K until advised by ATC.  
NOTE: AKMIE transition: for aircraft inbound to BML, SPI, or PIA, or as assigned by ATC.  
NOTE: ROBERTS transition: for aircraft inbound to CMI or STL, or as assigned by ATC.

(NARRATIVE ON FOLLOWING PAGE) NOTE: Chart not to scale.

EC-3, 22 FEB 2024 to 21 MAR 2024

EC-3, 22 FEB 2024 to 21 MAR 2024



DEPARTURE ROUTE DESCRIPTION

TAKEOFF RWY 5: Climb heading 051° or as assigned by ATC to at or above 1240, expect vectors to JILYN, thence . . . .

TAKEOFF RWY 14: Climb heading 147° or as assigned by ATC to at or above 1230, expect vectors to JILYN, thence . . . .

TAKEOFF RWY 23: Climb heading 231° or as assigned by ATC to at or above 1230, expect vectors to JILYN, thence . . . .

TAKEOFF RWY 32: Climb heading 327° or as assigned by ATC to at or above 1240, expect vectors to JILYN, thence . . . .

. . . . on track 184° to JORJO, then on (transition), maintain 3000, expect filed altitude ten minutes after departure.

- AKMIE TRANSITION (JORJO5.AKMIE)
- ARLYN TRANSITION (JORJO5.ARLYN)
- BEKKI TRANSITION (JORJO5.BEKKI)
- ROBERTS TRANSITION (JORJO5.RBS)

EC-3, 22 FEB 2024 to 21 MAR 2024

EC-3, 22 FEB 2024 to 21 MAR 2024