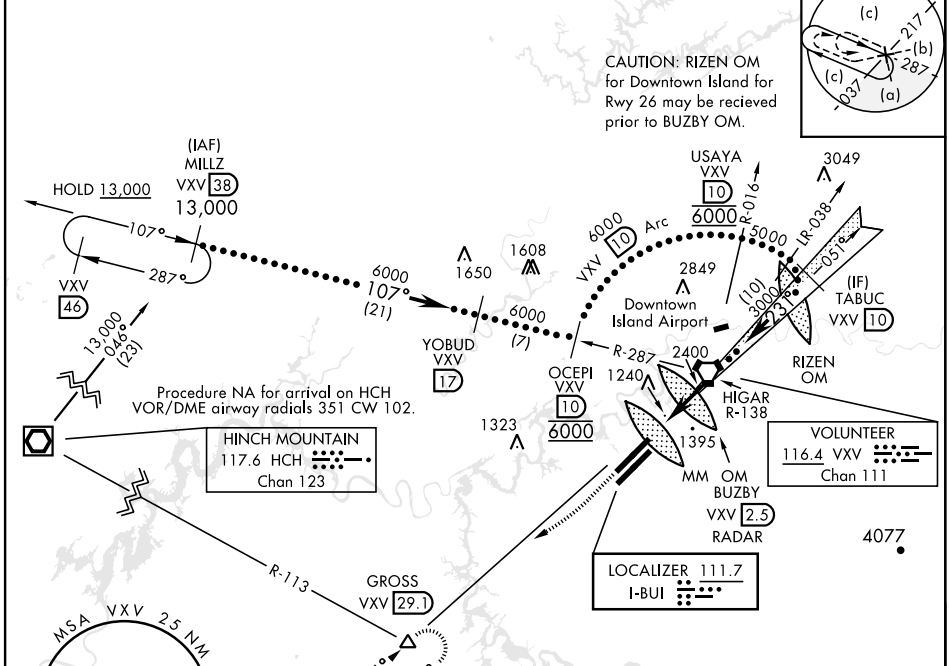


HI-ILS or LOC RWY 23R

LOC I-BUI 111.7	APCH CRS 231°	Rwy ldg TDZE Arprt Elev 9495 984 986	AL-218 [USAF]	MC GHEE TYSON (KTYS)
DME required.			ALSF-2	MISSED APPROACH: Climb to 2000 then dimbing right turn to 4000 on heading 240° and VXV VORTAC R-231 to GROSS/VXV 29.1 DME and hold.
*When ALS inop, increase CAT E RVR to 40, vis to 3/4 mile. **When ALS inop, increase vis to 1 1/8 miles.				

ATIS 128.35	KNOXVILLE APP CON 123.9 360.8	KNOXVILLE TOWER 121.2 257.8	GND CON 121.9 348.6	CLNC DEL 121.65	ASR
-----------------------	---	---------------------------------------	-------------------------------	---------------------------	-----

RVR 1800 authorized with use of FD or AP or HUD to DA (NA when using alimeter setting).



2000	4000	GROSS VXV 29.1							
CATEGORY	C	D	E						
S-ILS 23R *	1184/1800	200	(200-1/2)						
S-LOC 23R **	1560-1 1/4	576	(600-1 1/4)						
CIRCLING	1660-2 674 (700-2)	1900-3	914 (1000-3)						

ELEV 986	TDZE 984
Rwy 05L ldg 9510' Rwy 05R ldg 8600' Rwy 23L ldg 8600' Rwy 23R ldg 9495' HIRL Rwy 5R-23L, 5L-23R REIL Rwy 5R-23L TDZL/CL Rwy 5R, 23R	
231° 4.2 NM from FAF	

HI-ILS or LOC RWY 23R



SE-1, 22 FEB 2024 to 21 MAR 2024

SE-1, 22 FEB 2024 to 21 MAR 2024

Amdt 6A 04NOV21