

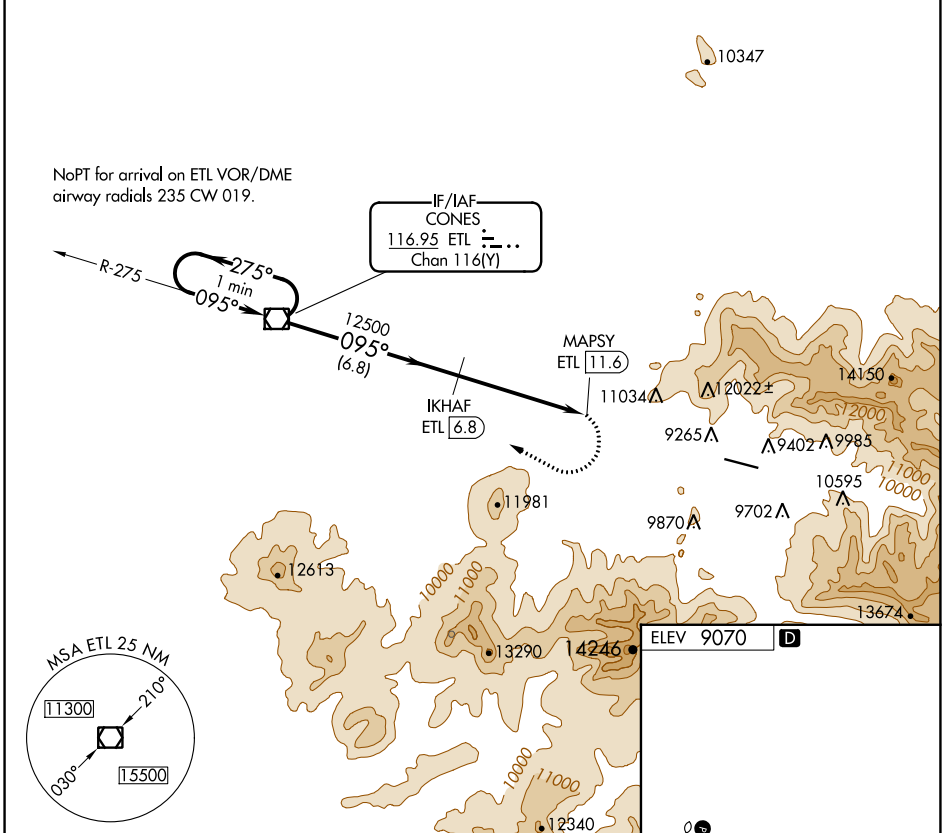
VOR/DME ETL 116.95 Chan 116(Y)	APP CRS 095°	Rwy Idg TDZE Apt Elev N/A N/A 9070
--	------------------------	---

VOR/DME-A

TELLURIDE RGNL (TEX)

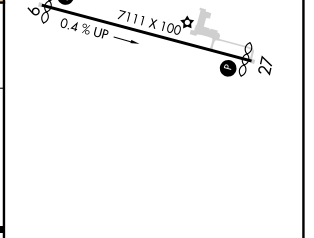
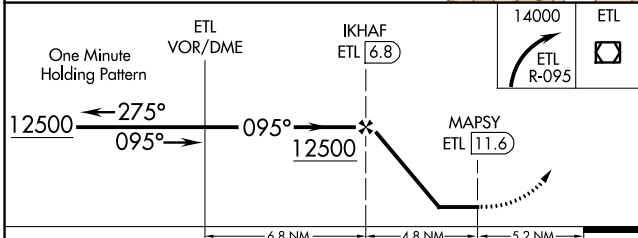
	Circling NA north of Rwy 9-27. Procedure NA at night.	MISSED APPROACH: Immediate climbing right turn to 14000 via ETL VOR/DME R-095 to ETL VOR/DME and hold.
--	--	---

AWOS-3 118.325	DENVER CENTER 125.35 354.05	UNICOM 123.0 (CTAF) 1
--------------------------	---------------------------------------	---------------------------------



SW-1, 22 FEB 2024 to 21 MAR 2024

SW-1, 22 FEB 2024 to 21 MAR 2024



CATEGORY	A	B	C	D
C CIRCLING	12420-6 3350 (3400-6)		NA	

HIRL Rwy 9-27 1
 REIL Rwys 9 and 27 1