

WAAS CH <b>82621</b> <b>W09A</b>	APP CRS <b>096°</b>	Rwy Idg TDZE <b>9038</b> Apt Elev <b>9070</b>	<b>6911</b>
--	------------------------	---	-------------

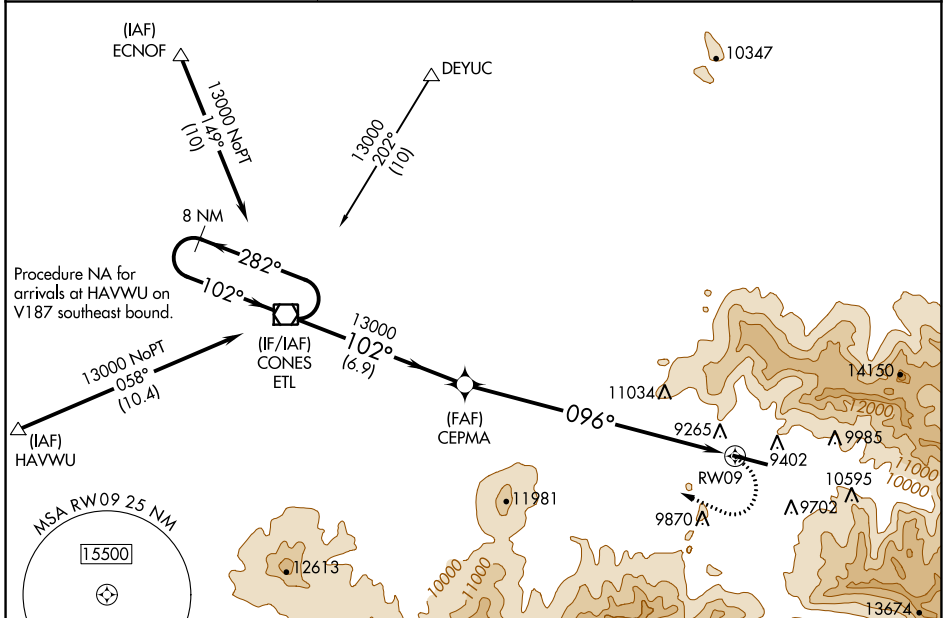
# RNAV (GPS) Y RWY 9

TELLURIDE RGNL (TEX)

**⚠** Circling NA at night. When local altimeter setting not received, procedure NA.  
**⚠** Circling NA north of Rwy 9-27. DME/DME RNP-0.3 NA.  
**⚠** -18°C # Missed approach requires a minimum climb of 380 feet per NM to 12500.

MISSED APPROACH: Climbing right turn to 15000 direct ETL VOR/DME and hold, continue climb-in-hold to 15000.

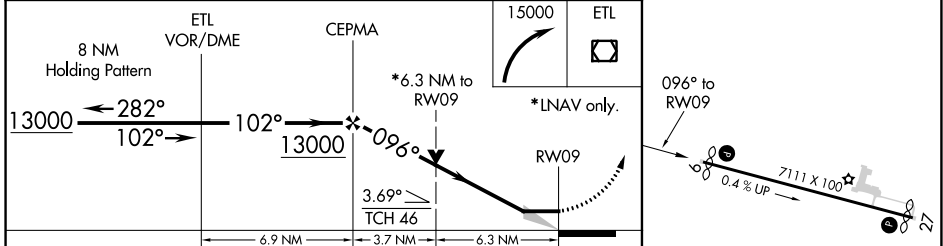
AWOS-3 <b>118.325</b>	DENVER CENTER <b>125.35 354.05</b>	UNICOM <b>123.0 (CTAF) 0</b>
--------------------------	---------------------------------------	---------------------------------



SW-1, 22 FEB 2024 to 21 MAR 2024

SW-1, 22 FEB 2024 to 21 MAR 2024

ELEV 9070	TDZE 9038
-----------	-----------



CATEGORY	A	B	C	D
LP MDA	11500-1¼ 2462 (2500-1¼)	11500-1½ 2462 (2500-1½)		NA
LNAV MDA#	11900-1¼ 2862 (2900-1¼)	11900-1½ 2862 (2900-1½)		NA
LNAV MDA	12140-1¼ 3102 (3100-1¼)	12140-1½ 3102 (3100-1½)		NA
<b>C</b> CIRCLING	12140-1¼ 3070 (3100-1¼)	12140-1½ 3070 (3100-1½)		NA

HIRL Rwy 9-27 **0**  
 REIL Rlys 9 and 27 **0**