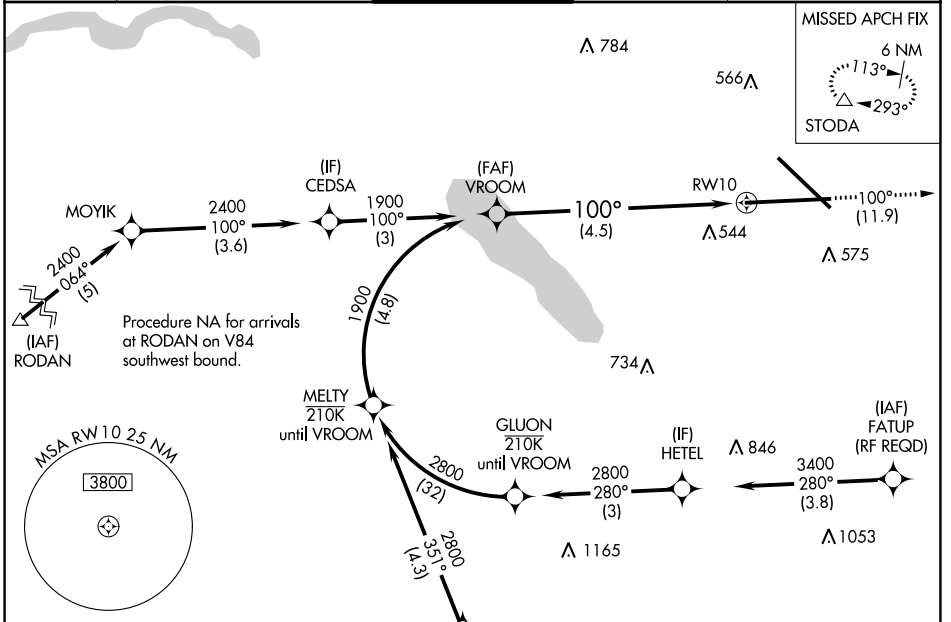


APP CRS	Rwy Idg	9014
100°	TDZE	421
	Apt Elev	421

RNAV (RNP) Y RWY 10

SYRACUSE HANCOCK INTL (SYR)

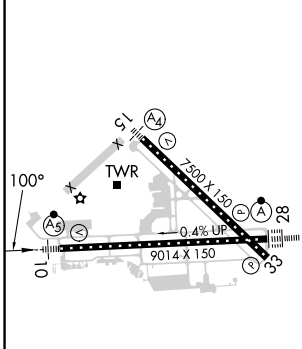
RNP AR APCH.		MALSR	MISSED APPROACH:
<p>▼ For uncompensated Baro-VNAV systems, procedure NA below -18°C or above 54°C. For inop ALS, increase RNP 0.15 all Cats visibility to 1½. For inop ALS, increase RNP 0.30 all Cats visibility to 1¾.</p>			<p>Climb to 3000 on track 100° to STODA and hold.</p>
ATIS	SYRACUSE APP CON	SYRACUSE TOWER	GND CON
124,225	126.125 269.125	120.3 239.0	121.7 348.6
		CLNC DEL	
		125.05 257.775	



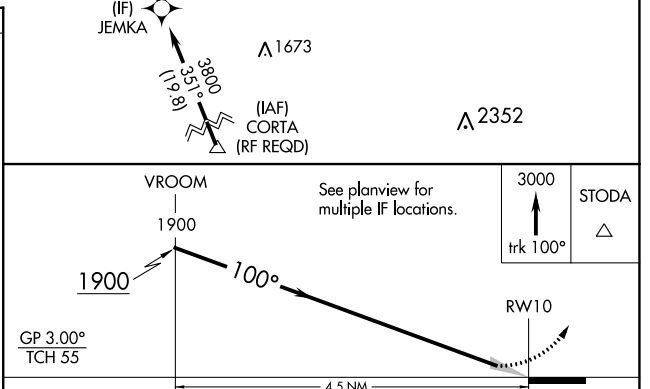
NE-2, 22 FEB 2024 to 21 MAR 2024

NE-2, 22 FEB 2024 to 21 MAR 2024

ELEV 421	D	TDZE 421
----------	----------	----------



TDZ/CL Rwy 28	HIRL Rwy 10-28 and 15-33
---------------	--------------------------



CATEGORY	A	B	C	D
RNP 0.15 DA		816/45	395 (400-¾)	
RNP 0.30 DA		881/55	460 (500-1)	

AUTHORIZATION REQUIRED