

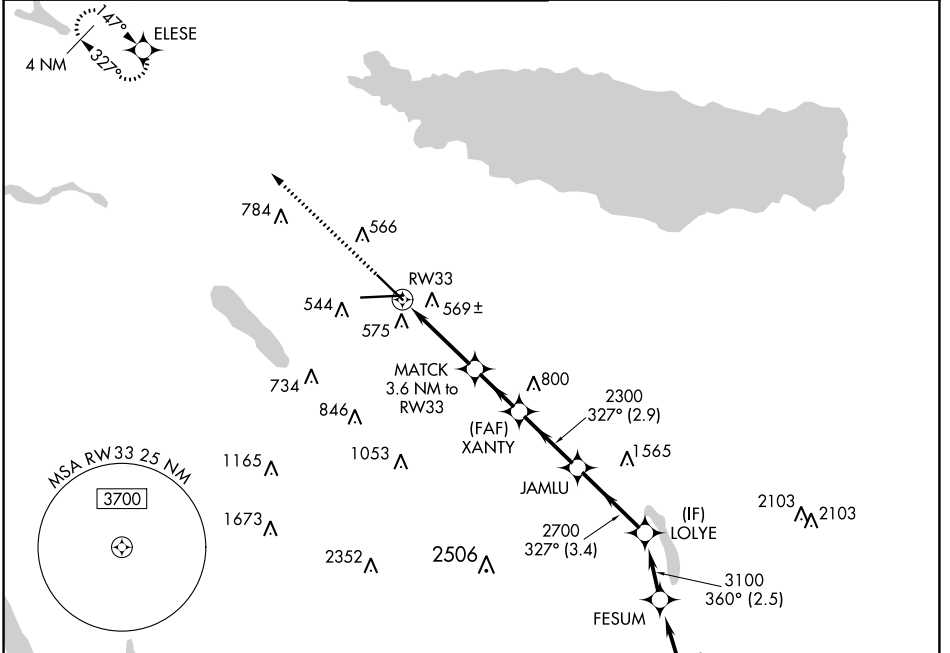
WAAS CH <b>81823</b> <b>W33A</b>	APP CRS <b>327°</b>	Rwy Idg TDZE Apt Elev	<b>7500</b> <b>409</b> <b>421</b>
--	------------------------	-----------------------------	---

# RNAV (GPS) RWY 33

SYRACUSE HANCOCK INTL (SYR)

RNP APCH.		<p>▼ Rwy 33 helicopter visibility reduction below 3/4 SM NA. For uncompensated ▲ Baro-VNAV systems, LNAV/VNAV NA below -20°C or above 54°C.</p>		<p>MISSED APPROACH: Climb to 3000 direct ELESE and hold.</p>	
-----------	--	---	--	--	--

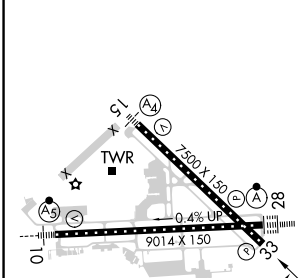
ATIS <b>124.225</b>	SYRACUSE APP CON <b>126.125 269.125</b>	SYRACUSE TOWER <b>120.3 239.0</b>	GND CON <b>121.7 348.6</b>	CLNC DEL <b>125.05 257.775</b>
------------------------	--	--------------------------------------	-------------------------------	-----------------------------------



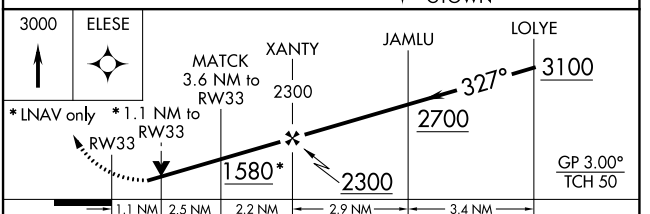
NE-2, 22 FEB 2024 to 21 MAR 2024

NE-2, 22 FEB 2024 to 21 MAR 2024

ELEV 421	<b>D</b>	TDZE 409
----------	----------	----------



TDZ/CL Rwy 28	HIRL Rws 10-28 and 15-33
---------------	--------------------------



CATEGORY	A	B	C	D
LPV DA		715/45	306 (300-7/8)	
LNAV/VNAV DA		882-1 3/8	473 (500-1 3/8)	
LNAV MDA	820/55	411 (400-1)	820/60	411 (400-1 1/4)
<input checked="" type="checkbox"/> CIRCLING	900-1 479 (500-1)	920-1 499 (500-1)	1020-1 1/2 599 (600-1 1/2)	1180-2 1/2 759 (800-2 1/2)