

SHEMYA I, ALEUTIAN I, ALASKA

# VOR/DME or TACAN RWY 10

VORTAC SYA <b>109.0</b> Chan <b>27</b>	APCH CRS <b>092°</b>	Rwy Idg <b>10,004</b> TDZE <b>98</b> Arprt Elev <b>98</b>
--	-------------------------	---

AL-1246 [USAF]

EARECKSON AS (PASY)

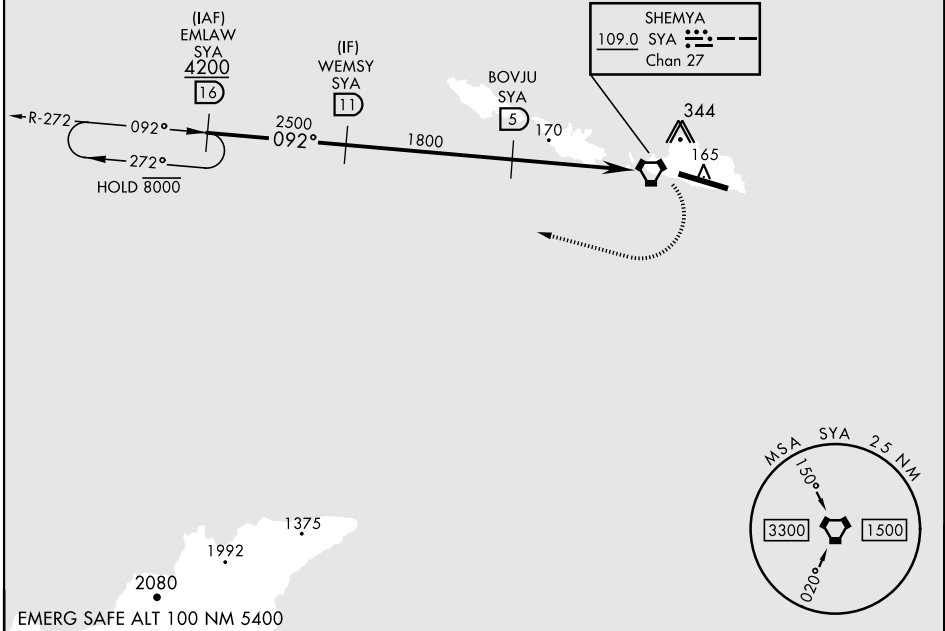
\* When ALS inop, increase CAT AB vis to 1½ miles;  
CAT CDE vis to 1¼ miles.  
\*\* Circling Not Authorized in area N of Rwy 10-28.



MISSED APPROACH: Climb to 1200, then climbing right turn to 4200, intercept SYA R-272 direct EMLAW and hold.

ANCHORAGE CENTER <b>119.1 339.8</b>	CTAF <b>127.2 352.05 0</b>
--	-------------------------------

CAUTION: Numerous obstructions in area N of Rwy 10-28.  
Missed approach requires use of RNAV or ATC RADAR monitoring.



WEMSYS (11) 2500		BOVJU (5) 1800		VORTAC SYA (109.0) 98		EMLAW R-272 (16) 98	
2500		1800		1200		4200	
092°		12.56°		TCH 42		ELEV 98 TDZE 98	
4.9 NM		1.2 NM					
CATEGORY	A	B	C	D	E		
S-10 *	640-1	542 (600-1)	640-1½	542 (600-1½)			
CIRCLING **	640-1½	542 (600-1½)	640-1¾	562 (600-2)	660-2	680-2	HIRL Rwy 10-28 REIL Rwy 10 and 28

SHEMYA I, ALEUTIAN I, ALASKA  
Amdt 6 02DEC21

52°43'N-174°07'E

EARECKSON AS (PASY)

# VOR/DME or TACAN RWY 10

AK, 25 JAN 2024 to 21 MAR 2024

AK, 25 JAN 2024 to 21 MAR 2024