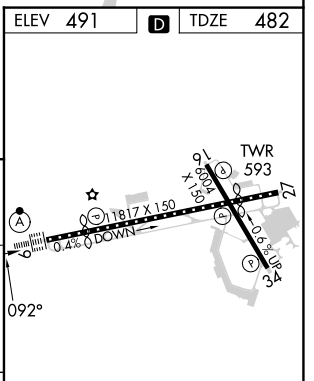
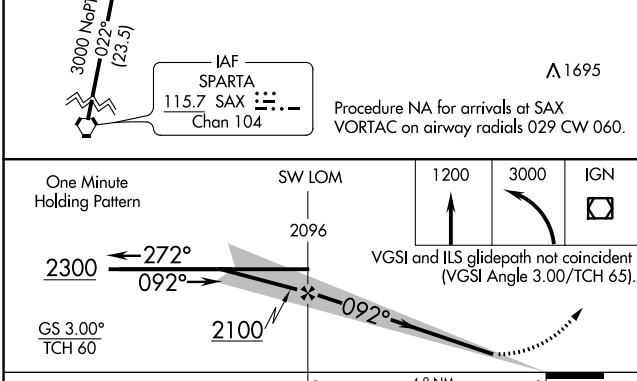
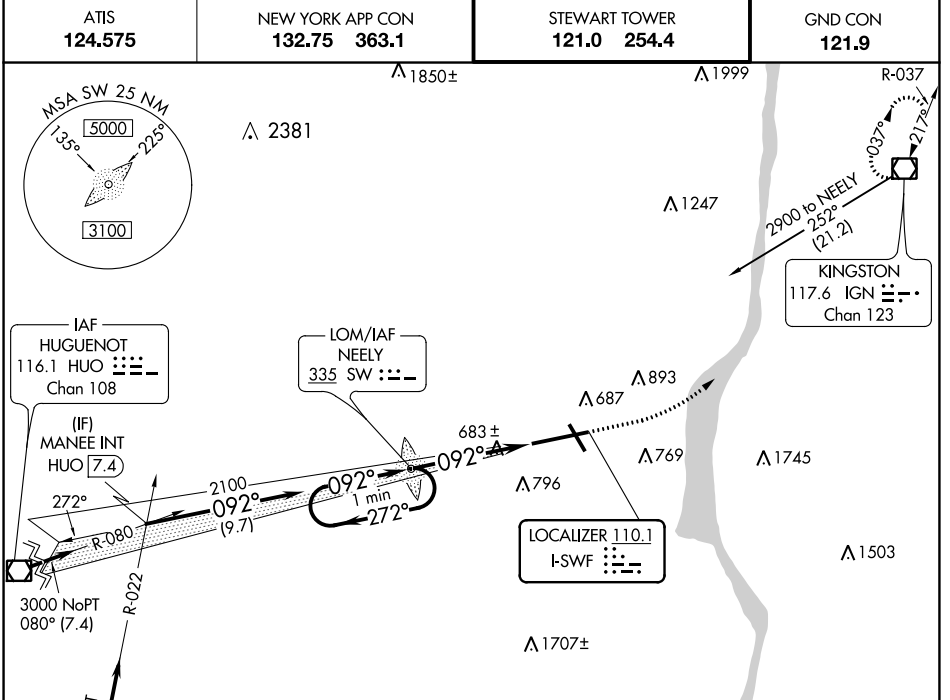


LOC I-SWF <b>110.1</b>	APP CRS <b>092°</b>	Rwy Idg <b>8817</b>
		TDZE <b>482</b>
		Apt Elev <b>491</b>

# ILS or LOC RWY 9

NEW YORK STEWART INTL (SWF)

	MISSED APPROACH: Climb to 1200 then climbing left turn to 3000 direct IGN VOR/DME and hold.		
	ATIS <b>124.575</b>	NEW YORK APP CON <b>132.75 363.1</b>	STEWART TOWER <b>121.0 254.4</b>



CATEGORY	A	B	C	D
S-ILS 9		682/18 200 (200-½)		
S-LOC 9	940/24 458 (500-½)		940/50 458 (500-1)	
<b>C</b> CIRCLING	1200-1 709 (800-1)		1200-2 709 (800-2)	1200-2¼ 709 (800-2¼)

FDZ/CL Rwy 9					
HIRL Rwy 9-27 and 16-34					
REIL Rwy 16, 27 and 34					
FAF to MAP 4.8 NM					
Knots	60	90	120	150	180
Min:Sec	4:48	3:12	2:24	1:55	1:36

NE-2, 22 FEB 2024 to 21 MAR 2024

NE-2, 22 FEB 2024 to 21 MAR 2024