

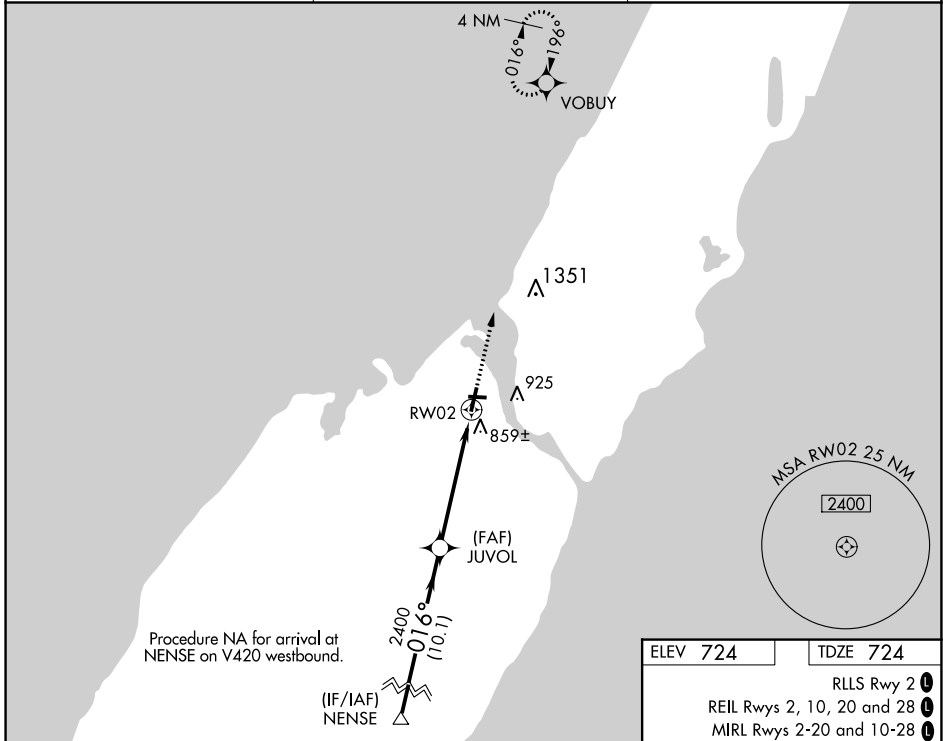
WAAS CH <b>81904</b> <b>W02A</b>	APP CRS <b>016°</b>	Rwy Idg <b>4599</b> TDZE <b>724</b> Apt Elev <b>724</b>
--	------------------------	---

# RNAV (GPS) RWY 2

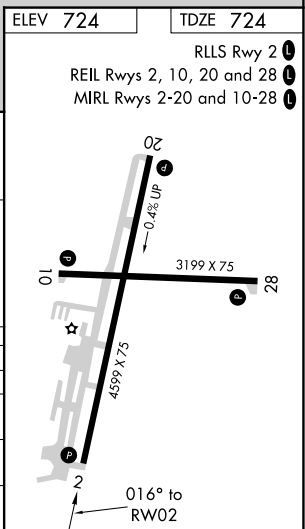
DOOR COUNTY CHERRYLAND (SUE)

RNP APCH.	<p><b>▼</b> Rwy 2 helicopter visibility reduction below 3/4 SM NA. For uncompensated Baro-VNAV systems, LNAV/VNAV NA below -16°C or above 54°C.</p> <p><b>▲</b></p>	MISSED APPROACH: Climb to 2600 direct VOBUY and hold.
-----------	---	---

AWOS-3PT <b>128.325</b>	GREEN BAY APP CON * <b>119.25 338.2</b>	UNICOM <b>122.7(CTAF) 0</b>
----------------------------	--	--------------------------------



EC-3, 22 FEB 2024 to 21 MAR 2024



VGSI and RNAV glidepath angles not coincident (VGSI Angle 3.00/TCH 34).

GP 3.00° TCH 40	10.1 NM	4 NM	1.1 NM
3500	2400	2400	2600
NENSE	JUVOL	RWY 2	VOBUY

CATEGORY	A	B	C	D
LPV DA	1013-1	289 (300-1)		
LNAV/VNAV DA	1164-1½	440 (500-1½)		
LNAV MDA	1120-1	396 (400-1)	1120-1⅛	396 (400-1⅛)
CIRCLING	1280-1	556 (600-1)	1280-1½ 556 (600-1½)	1340-2 616 (700-2)