

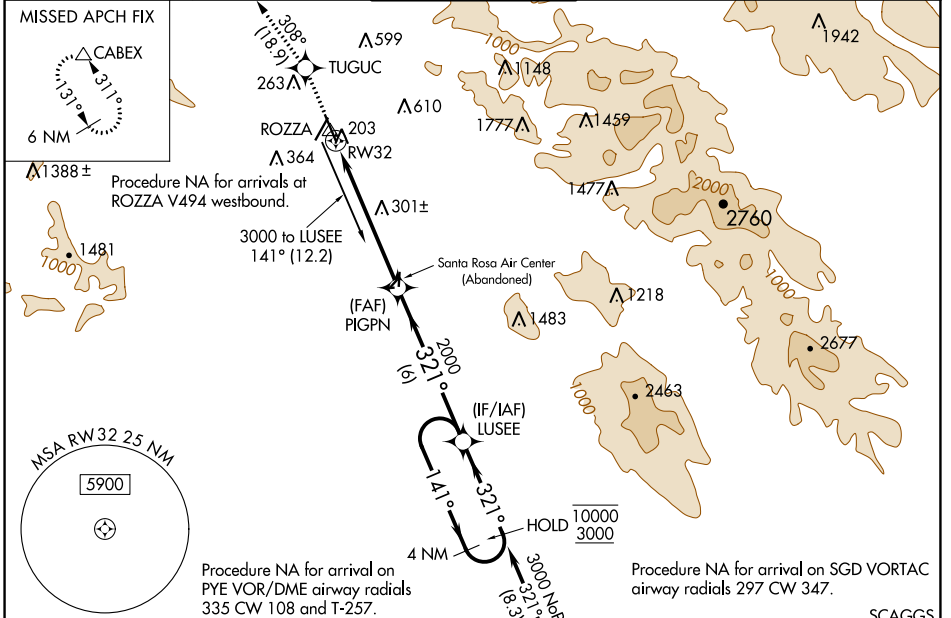
WAAS CH 72611 W32A	APP CRS 321°	Rwy Idg TDZE Apt Elev	6000 122 129
--	------------------------	-----------------------------	---

RNAV (GPS) RWY 32

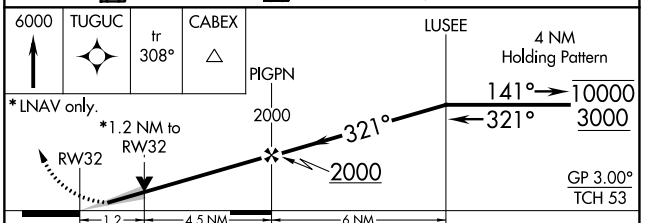
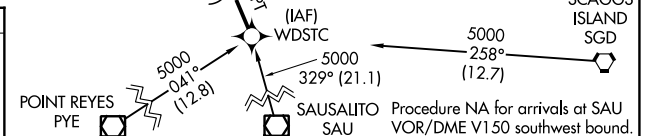
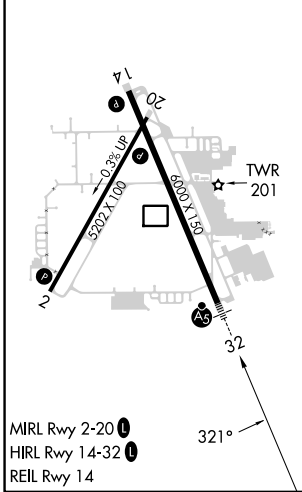
CHARLES M SCHULZ-SONOMA COUNTY (STS)

RNP APCH-GPS.	MALSRL 	MISSED APPROACH: Climb to 6000 direct TUGUC and on track 308° to CABEX and hold, continue climb-in-hold to 6000.
<p> For uncompensated Baro-VNAV systems, LNAV/VNAV NA below -4°C or above 54°C. #RVR 1800 authorized with use of FD or AP or HUD to DA.</p>		

ATIS 120.55	OAKLAND CENTER 127.8 353.5	SANTA ROSA TOWER* 118.5 (CTAF) 0 363.0	GND CON 121.9	UNICOM 122.95
-----------------------	--------------------------------------	--	-------------------------	-------------------------



ELEV 129	D	TDZE 122
----------	----------	----------



CATEGORY	A	B	C	D
LPV DA#		322/24	200 (200-½)	
LNAV/VNAV DA		570/50	448 (500-1)	
LNAV MDA	560/24	438 (500-½)	560/40	438 (500-¾)
CIRCLING	600-1	680-1	1080-3	1420-3
	471 (500-1)	551 (600-1)	951 (1000-3)	1291 (1300-3)

SW-2, 22 FEB 2024 to 21 MAR 2024

SW-2, 22 FEB 2024 to 21 MAR 2024