

ALAMO THREE DEPARTURE

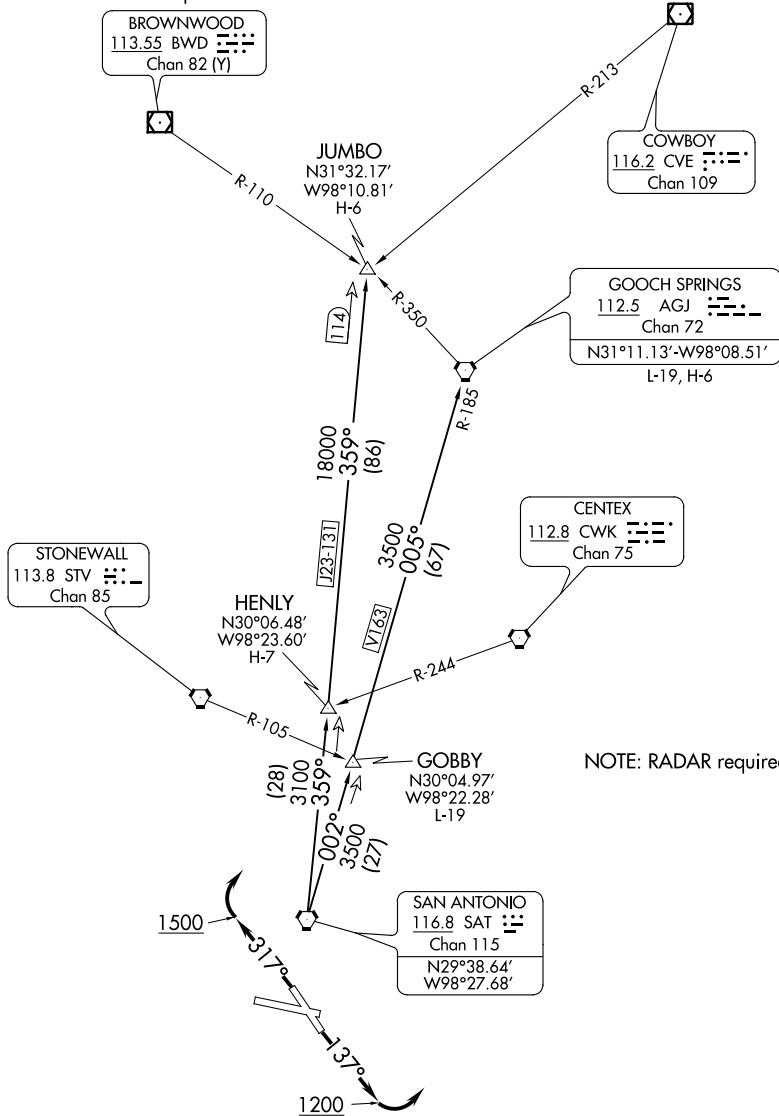
TAKEOFF MINIMUMS:

Rwy 14, 32: Standard.

Rwy 9: Standard with minimum climb of 225' per NM to 1900.

Rwy 27: 300-1³/₄ or standard with minimum climb of 221' per NM to 900, or alternatively, with standard takeoff minimums and a normal 200' per NM climb gradient, takeoff must occur no later than 1700' prior to DER.

ATIS 128.8
CLNC DEL (When twr closed) 121.7
GND CON 121.7 379.9
SAN ANTONIO DEP CON 125.7 290.225
STINSON TOWER* 118.2 379.9



NOTE: RADAR required.

(NARRATIVE ON FOLLOWING PAGE)

NOTE: Chart not to scale

SC-3, 22 FEB 2024 to 21 MAR 2024

SC-3, 22 FEB 2024 to 21 MAR 2024

ALAMO THREE DEPARTURE

ALAMO THREE DEPARTURE



DEPARTURE ROUTE DESCRIPTION

TAKEOFF RUNWAYS 9, 27: Climb on assigned heading and altitude for RADAR vectors to SAT VORTAC, thence...

TAKEOFF RUNWAY 14: Climb on heading 137° to 1200 before turning left for RADAR vectors to SAT VORTAC, thence...

TAKEOFF RUNWAY 32: Climb on heading 317° to 1500 before turning right for RADAR vectors to SAT VORTAC, thence...

...on transition/route. Expect filed altitude 10 minutes after departure.

GOBBY TRANSITION (ALAMO3.GOBBY): From over SAT VORTAC on SAT R-002 to GOBBY.

GOOCH SPRINGS TRANSITION (ALAMO3.AGJ): From over SAT VORTAC on SAT R-002 to GOBBY, then on SAT R-002 and AGJ R-185 to AGJ VORTAC.

HENLY TRANSITION (ALAMO3.HENLY): From over SAT VORTAC on SAT R-359 to HENLY.

JUMBO TRANSITION (ALAMO3.JUMBO): From over SAT VORTAC on SAT R-359 to JUMBO.

SC-3, 22 FEB 2024 to 21 MAR 2024

SC-3, 22 FEB 2024 to 21 MAR 2024