

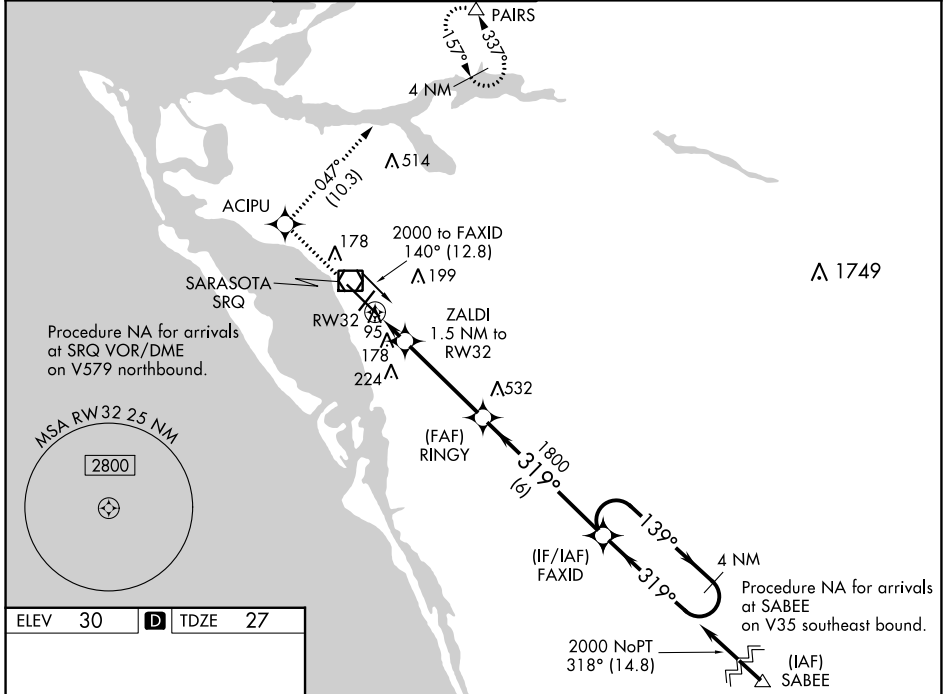
WAAS CH 72605	APP CRS 319°	Rwy Idg TDZE Apt Elev	7510 27 30
-------------------------	------------------------	-----------------------------	---------------------------------------

RNAV (GPS) RWY 32

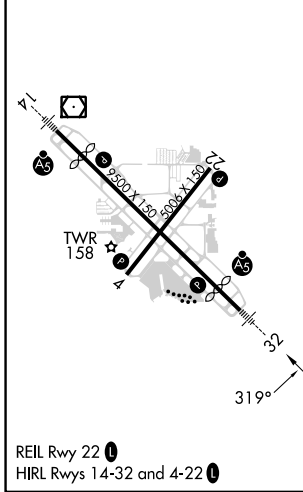
SARASOTA/BRADENTON INTL (SRQ)

RNP APCH. ▼ For uncompensated Baro-VNAV systems, LNAV/VNAV NA below -15°C or above 43°C. When control tower closed, LPV and LNAV/VNAV NA; increase LNAV all Cats visibility to 1 mile. When control tower closed, inop table does not apply to LNAV Cats A and B. When control tower closed, for inop MALSRL, increase LNAV Cat C and D visibility to 1½ mile.	MALSRL 45	MISSED APPROACH: Climb to 3000 direct ACIPU and on track 047° to PAIRS and hold, continue climb-in-hold to 3000.
---	--------------	--

ATIS 124.375	TAMPA APP CON 119.65 353.575	SARASOTA TOWER ★ 120.1(CTAF) 256.8	GND CON 121.9 273.6	CLNC DEL 118.25	UNICOM 122.95
------------------------	--	--	-------------------------------	---------------------------	-------------------------



ELEV 30	D	TDZE 27
---------	----------	---------



3000	ACIPU	PAIRS	FAXID	4 NM Holding Pattern
↑	✧	tr 047°	△	
*LNAV only.				
RW32	ZALDI 1.5 NM to RW32	RINGY 1800	FAXID 1800	2000
1.5 NM	3.9 NM	6 NM	139°	← 319°
GP 3.00° TCH 53				
CATEGORY	A	B	C	D
LPV DA	227-1/2		200 (200-1/2)	
LNAV/DA VNAV	463-1		436 (500-1)	
LNAV MDA	440-1/2	413 (500-1/2)	440-3/4	413 (500-3/4)
CIRCLING	500-1	470 (500-1)	600-1/2	600-2
			570 (600-1/2)	570 (600-2)

SE-3, 22 FEB 2024 to 21 MAR 2024

SE-3, 22 FEB 2024 to 21 MAR 2024