

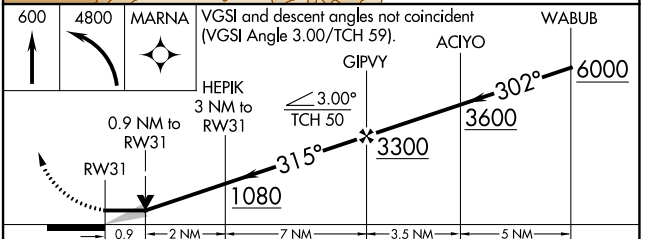
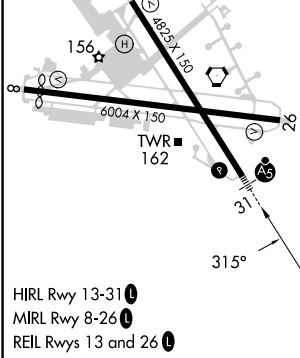
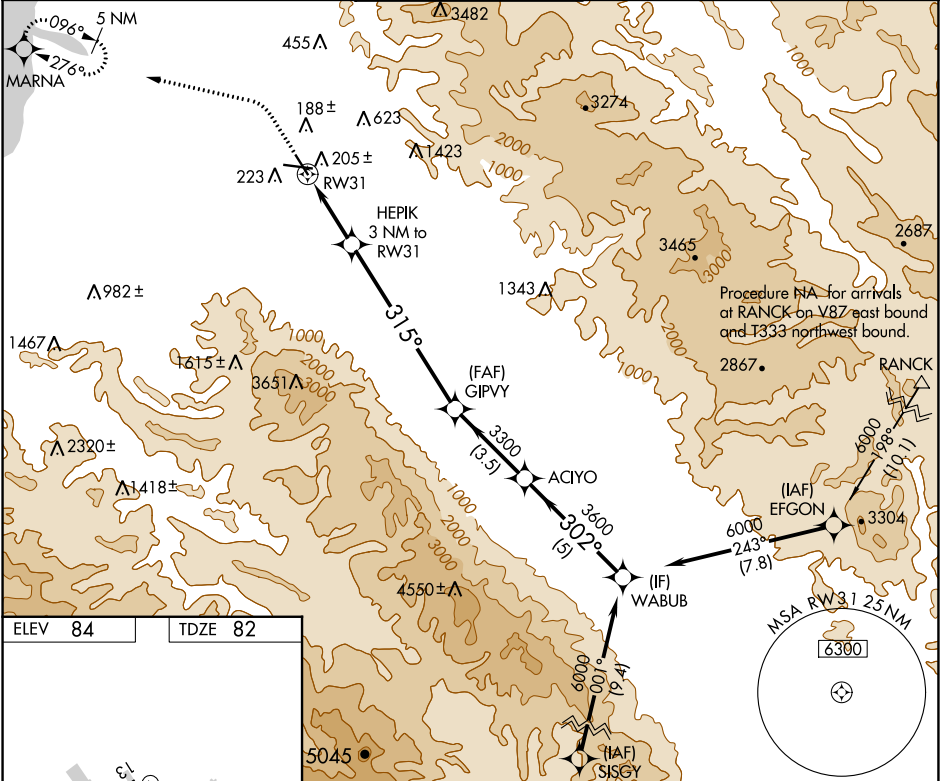
APP CRS	Rwy Idg	4825
315°	TDZE	82
	Apt Elev	84

RNAV (GPS) Y RWY 31

SALINAS MUNI (SNS)

RNP APCH-GPS.	MALSR	MISSED APPROACH: Climb to 600 then climbing left turn to 4800 direct MARN A and hold, continue climb-in-hold to 4800.
<p>⚠ Circling NA for Cats C and D northeast of Rwy 13 and north of Rwy 26. For inop ALS, increase LNAV Cat C/D visibility to RVR 5500.</p>		

ATIS 124.85	NORCAL APP CON 133.0 251.15	SALINAS TOWER * 119.525 (CTAF) 0 239.3	GND CON 121.7	UNICOM 123.0
-----------------------	---------------------------------------	--	-------------------------	------------------------



CATEGORY	A	B	C	D
LNAV MDA	440/24	358 (400-½)	440/30	358 (400-¾)
<input checked="" type="checkbox"/> CIRCLING	540-1	456 (500-1)	780-2 696 (700-2)	1620-3 1536 (1600-3)

SW-2, 22 FEB 2024 to 21 MAR 2024

SW-2, 22 FEB 2024 to 21 MAR 2024