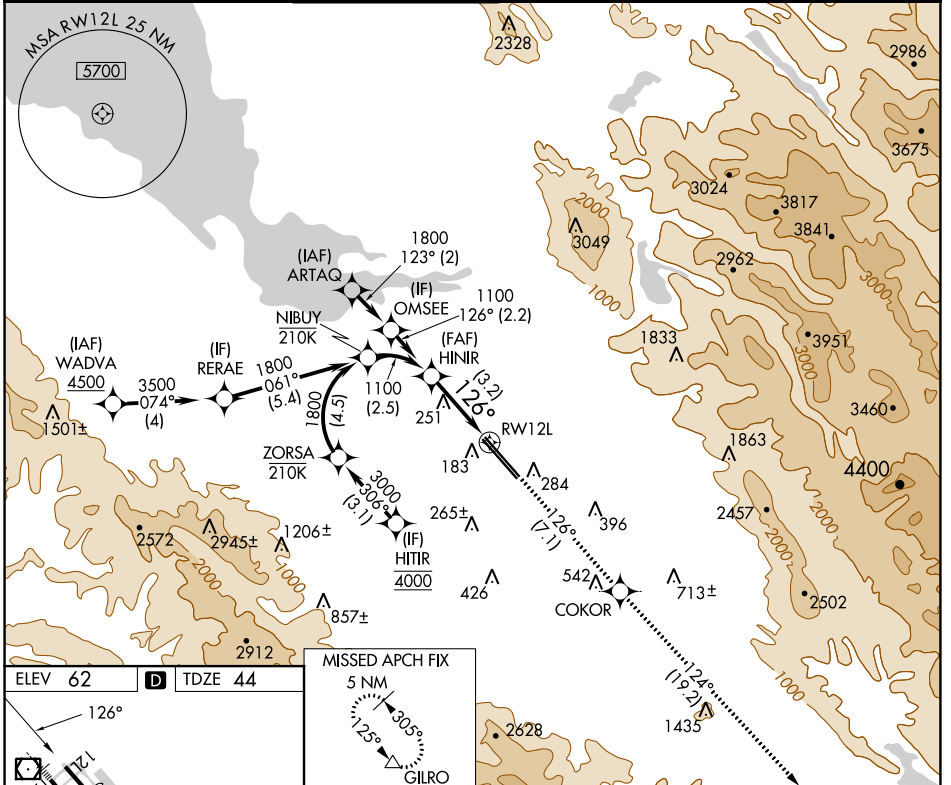


APP CRS 126°	Rwy Idg TDZE Apt Elev	8831 44 62
------------------------	-----------------------------	---------------------------------------

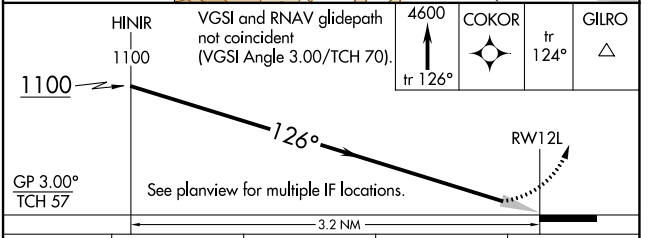
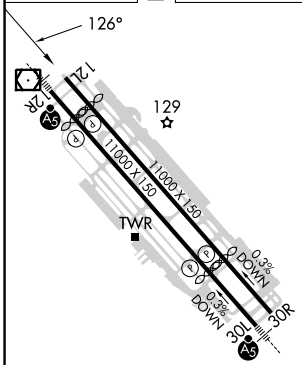
RNAV (RNP) Z RWY 12L

NORMAN Y MINETA SAN JOSE INTL (SJC)

RNP AR APCH-GPS.			MISSED APPROACH: Climb to 4600 on track 126° to COKOR and track 124° to GILRO and hold.						
<p>▼ For uncompensated Baro-VNAV systems, procedure NA below 0°C or above 54°C.</p>			D-ATIS 126.95	NORCAL APP CON 120.1 290.25	SAN JOSE TOWER* 124.0 (CTAF) 0 257.6	GND CON 121.7	CLNC DEL 118.0	CPDLC	UNICOM 122.95



ELEV 62	D	TDZE 44
---------	----------	---------



CATEGORY	A	B	C	D
RNP 0.18 DA		400-1	356 (400-1)	
RNP 0.30 DA		451-1 1/8	407 (400-1 1/8)	

REIL Rwy 12L
HIRL Rwys 12L-30R and 12R-30L

AUTHORIZATION REQUIRED

SW-2, 22 FEB 2024 to 21 MAR 2024

SW-2, 22 FEB 2024 to 21 MAR 2024