

LOC/DME I-ANT 110.9 Chan 46	APP CRS 128°	Rwy 13R Idg 8502 TDZE 809 Apt Elev 809
---	------------------------	---

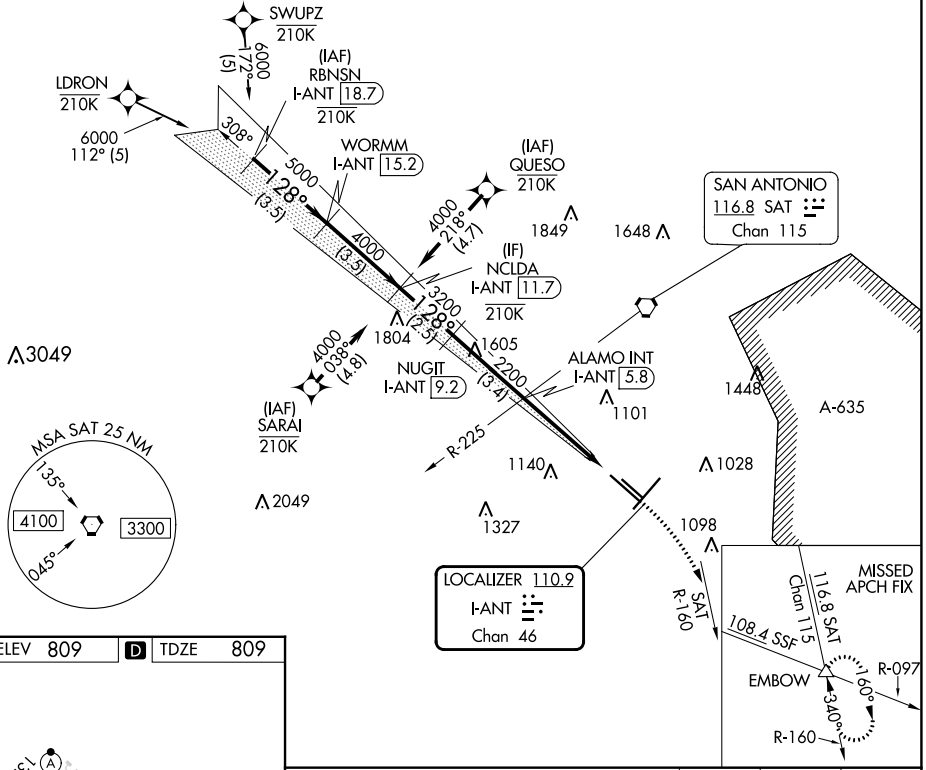
ILS RWY 13R (CAT II)

SAN ANTONIO INTL (SAT)

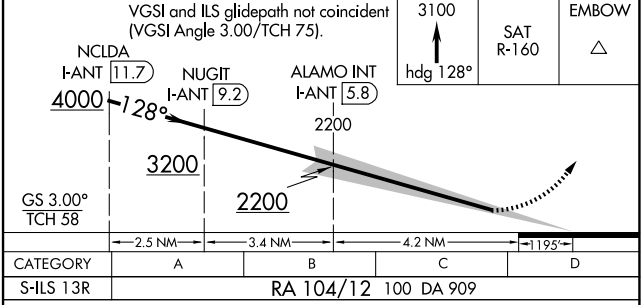
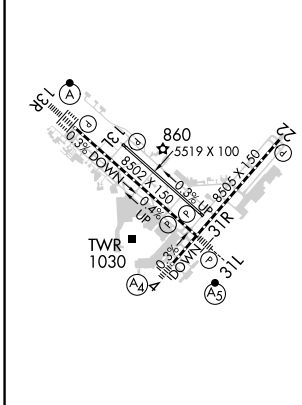
RNP APCH-GPS. From LDRON, SWUPZ, SARAI, QUESO.
RNAV 1-GPS or RADAR required for procedure entry. DME required.

ALSF-2
MISSED APPROACH: Climb to 3100 on heading 128° and SAT VORTAC R-160 to EMBOW INT and hold.

D-ATIS 118.9	SAN ANTONIO APP CON 125.1 307.0	SAN ANTONIO TOWER 119.8 257.8	GND CON 121.9 348.6	CLNC DEL 126.7	CPDLC
------------------------	---	---	-------------------------------	--------------------------	-------



ELEV 809	D	TDZE 809
----------	---	----------



CATEGORY II ILS - SPECIAL AIRCREW & AIRCRAFT CERTIFICATION REQUIRED