

VOR/DME CVO <b>115.4</b> Chan <b>101</b>	APP CRS <b>032°</b>	Rwy ldg TDZE Apt Elev <b>N/A</b> <b>227</b>
--	------------------------	--

# VOR-A

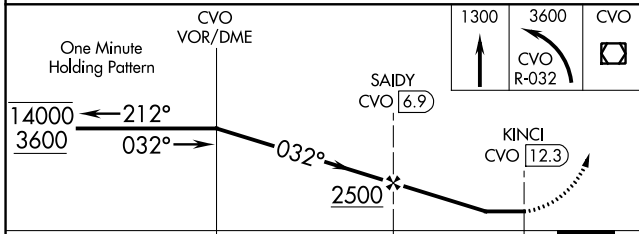
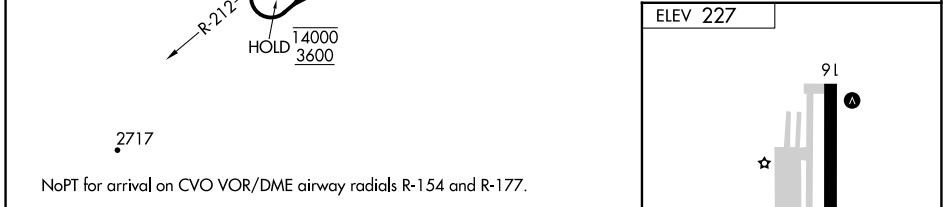
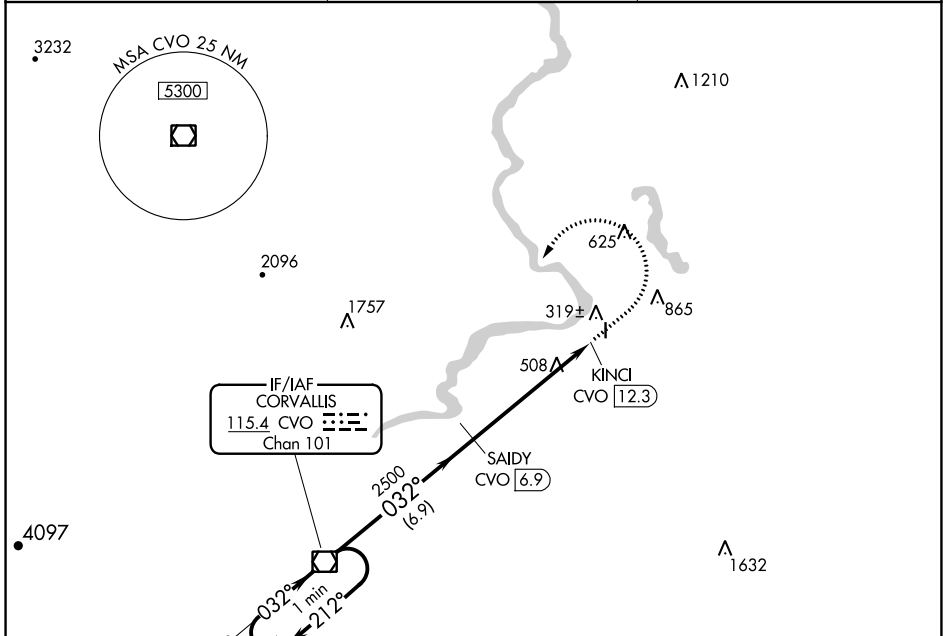
ALBANY MUNI (S12)

DME required.

**V** Rwy 16 and 34 helicopter visibility reduction below 1 SM NA. When **NA** local altimeter setting not received, use Corvallis altimeter setting.

MISSED APPROACH: Climb to 1300 then climbing left turn to 3600 on CVO VOR/DME R-032 to CVO VOR/DME and hold.

AWOS-3PT <b>119.925</b>	CASCADE APP CON * <b>127.5 348.7</b>	UNICOM <b>122.725 (CTAF) 0</b>
----------------------------	---	-----------------------------------



CATEGORY	A	B	C	D
<b>C</b> CIRCLING	940-1 713 (800-1)	1020-1 793 (800-1)	NA	

MIRL Rwy 16-34 **0**  
REIL Rwy 16 and 34 **0**

NW-1, 22 FEB 2024 to 21 MAR 2024

NW-1, 22 FEB 2024 to 21 MAR 2024