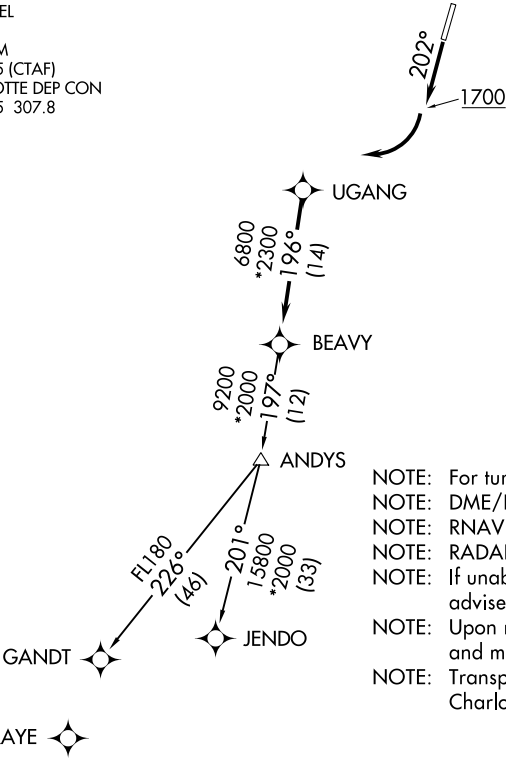


AWOS-3  
118.175  
CLNC DEL  
127.35  
UNICOM  
122.725 (CTAF)  
CHARLOTTE DEP CON  
128.325 307.8

TOP ALTITUDE:  
3000



- NOTE: For turbojets only.
- NOTE: DME/DME/IRU or GPS required.
- NOTE: RNAV 1.
- NOTE: RADAR required.
- NOTE: If unable to accept climb rates, advise ATC on initial contact.
- NOTE: Upon reaching 10000 MSL, accelerate to and maintain 280K, if unable advise ATC.
- NOTE: Transponder code will be issued via PDC or Charlotte CLNC DEL.

TAKEOFF MINIMUMS

Rwy 2: Standard.

Rwy 20: 400-2¾ or standard with minimum climb of 205’ per NM to 1300, or alternatively, with standard takeoff minimums and a normal 200’ per NM climb gradient, takeoff must occur no later than 1200’ prior to DER.

NOTE: Chart not to scale.

DEPARTURE ROUTE DESCRIPTION

TAKEOFF RWY 2: Climb heading 202° to 1700 before turning right.

Climb on heading assigned by ATC, expect RADAR vectors to UGANG, then on track 196° to BEAVY. Then on assigned transition. Maintain 3000, expect clearance to filed altitude within 10 minutes after departure.

GANDT TRANSITION (BEAVY5.GANDT)

JENDO TRANSITION (BEAVY5.JENDO)