

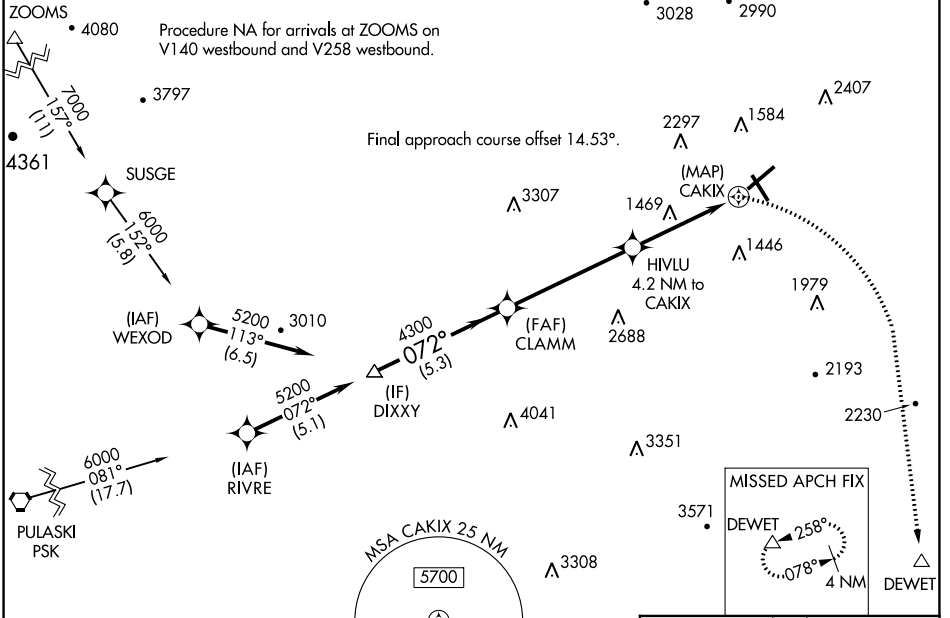
APP CRS	Rwy Idg	6800
072°	TDZE	1175
	Apt Elev	1175

RNAV (GPS) Y RWY 6

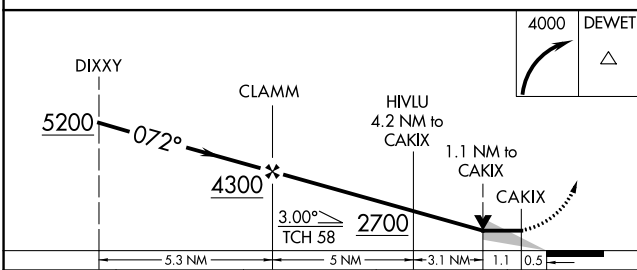
ROANOKE/BLACKSBURG RGNL (WOODRUM FLD) (R.O.A)

RNP APCH.	<p>⚠ Circling NA northwest of Rwy 6-24. For inop ALS, increase LNAV** Cat A and B visibility to 1 SM, LNAV Cat A visibility to 1 SM, and LNAV Cat C and D visibility to 1½ SM.</p> <p>⚠ -13°C</p>	<p>MALSR</p>	<p>MISSED APPROACH: Climbing right turn to 4000 direct DEWET and hold. ** Missed approach requires minimum climb of 276 feet per NM to 2700.</p>
-----------	---	--------------	--

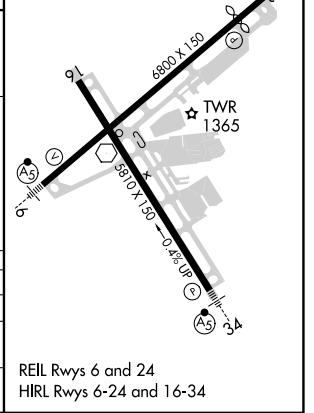
ATIS 132.375	ROANOKE APP CON 126.9 339.8	ROANOKE TOWER 118.3 257.8	GND CON 121.9 257.8	CLNC DEL 119.7
------------------------	---------------------------------------	-------------------------------------	-------------------------------	--------------------------



Procedure NA for arrivals at PSK VORTAC on airway radials 069 CW 153.



ELEV 1175	D	TDZE 1175
-----------	----------	-----------



CATEGORY	A	B	C	D
LNAV MDA**	1720-¾	545 (600-¾)	1720-1⅞	545 (600-1⅞)
LNAV MDA	1980-¾	805 (900-¾)	1980-1⅞	805 (900-1⅞)
C CIRCLING	1980-1 805 (900-1)	1980-1¼ 805 (900-1¼)	2420-3 1245 (1300-3)	2820-3 1645 (1700-3)

REIL Rwy 6 and 24
HIRL Rwy 6-24 and 16-34

NE-3, 22 FEB 2024 to 21 MAR 2024

NE-3, 22 FEB 2024 to 21 MAR 2024