

VORTAC BRV	APP CRS	Rwy Idg	<b>5000</b>
<b>114.5</b>	<b>314°</b>	TDZE	<b>196</b>
Chan <b>92</b>		Apt Elev	<b>211</b>

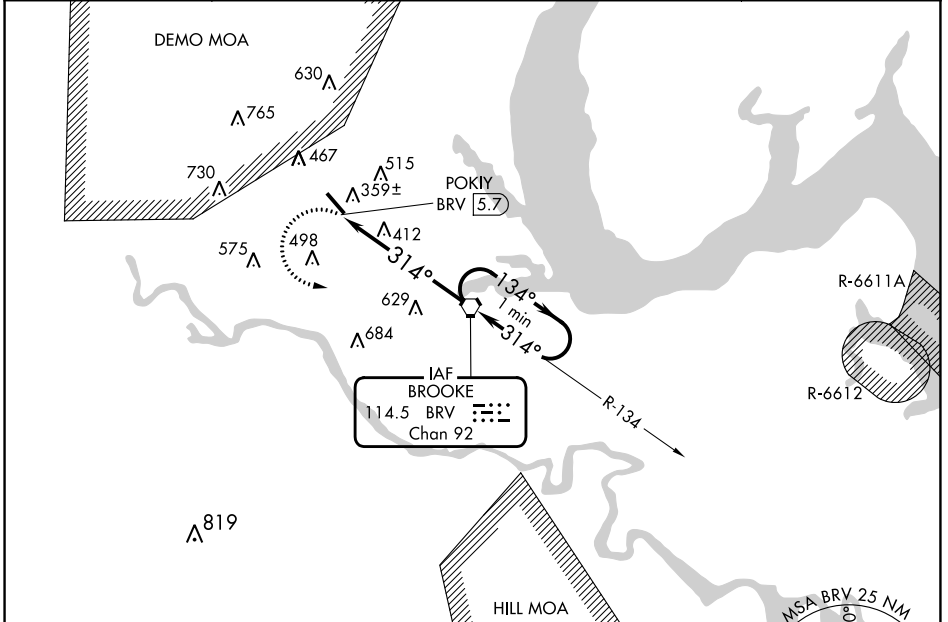
# VOR RWY 33

STAFFORD RGNL (R.MN)

**▽** If local altimeter setting not received, use Shannon, Fredericksburg, VA altimeter setting and increase all MDAs 40 feet. VDP NA with Shannon, Fredericksburg, VA altimeter setting. Inoperative table does not apply to Cat C.

**MALS** MISSED APPROACH: Climbing left turn to 2000 direct BRV VORTAC and hold.

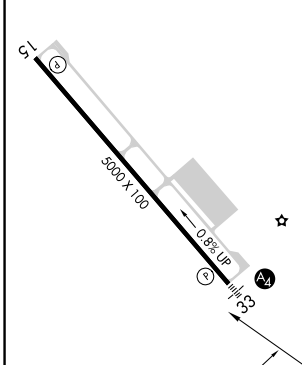
AWOS-3 <b>126.325</b>	QUANTICO APP CON* <b>127.05 290.375</b>	GCO <b>135.075</b>	UNICOM <b>122.725 (CTAF) 0</b>
--------------------------	--	-----------------------	-----------------------------------



NE-3, 22 FEB 2024 to 21 MAR 2024

NE-3, 22 FEB 2024 to 21 MAR 2024

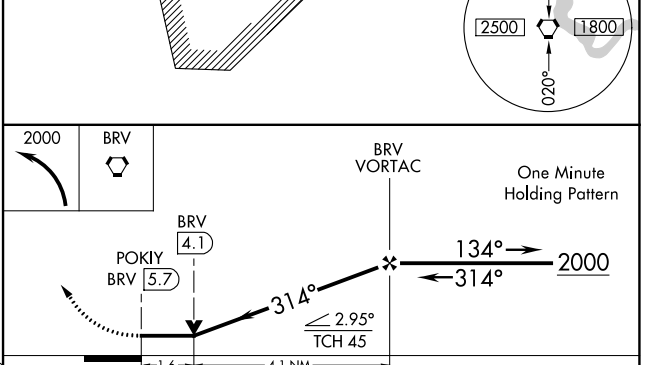
ELEV 211	TDZE 196
----------	----------



REIL Rwys 15   
 HIRL Rwy 15-33

FAF to MAP 5.7 NM

Knots	60	90	120	150	180
Min:Sec	5:42	3:48	2:51	2:17	1:54



CATEGORY	A	B	C	D
S-33	740-¾ 544 (600-¾)		740-1½ 544 (600-1½)	740-1¾ 544 (600-1¾)
CIRCLING	740-1 509 (600-1)	820-1 609 (700-1)	840-1¾ 629 (700-1¾)	1040-2¾ 829 (900-2¾)