

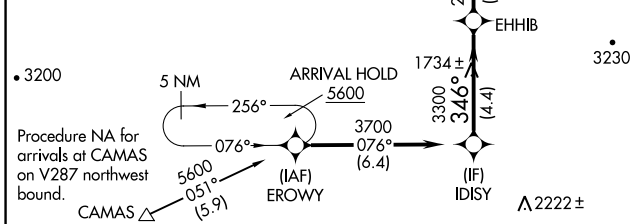
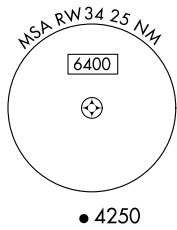
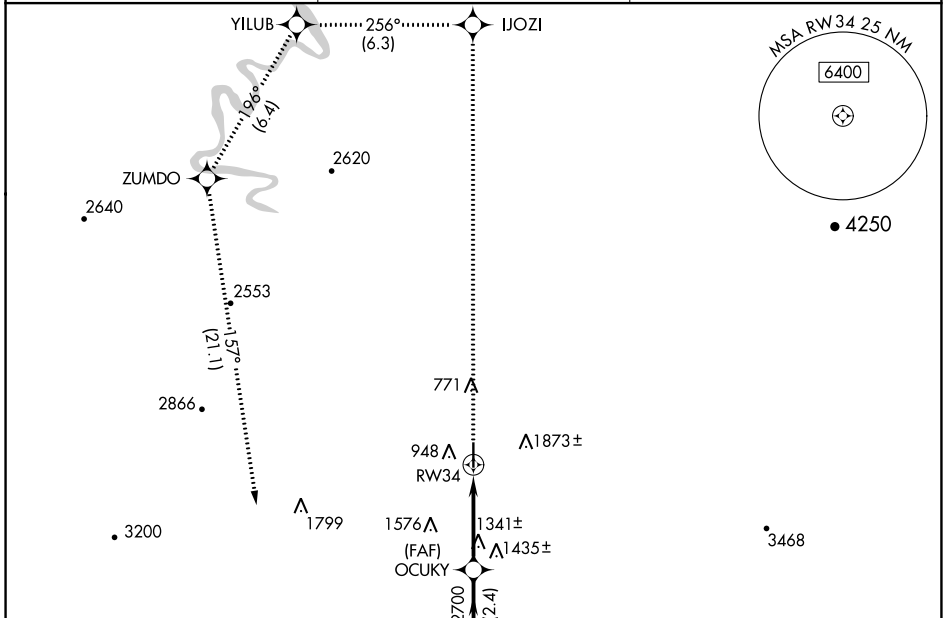
APP CRS <b>346°</b>	Rwy Idg TDZE Apt Elev	<b>N/A</b> <b>N/A</b> <b>533</b>
------------------------	-----------------------------	----------------------------------------

# RNAV (GPS)-B

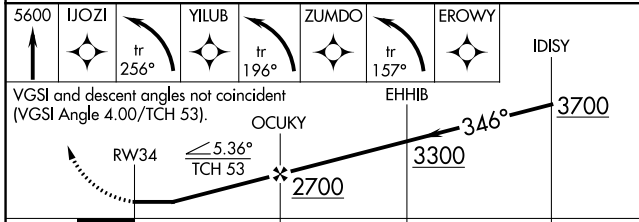
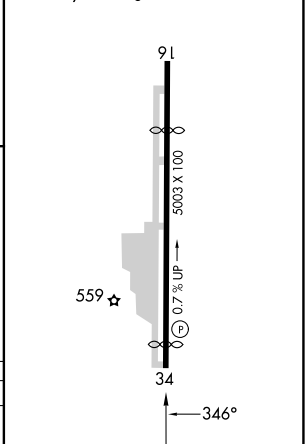
ROSEBURG RGNL (R.B.G)

RNP APCH - GPS.	MISSED APPROACH: Climb to 5600 direct IJOZI and left turn on track 256° to YILUB and left turn on track 196° to ZUMDO and left turn on track 157° to EROWY and hold.
<p><b>⚠</b> Circling NA east of Rwy 16-34. Procedure NA at night. Rwy 16, 34 helicopter visibility reduction below 1 SM NA.</p>	

ASOS <b>135.475</b>	SEATTLE CENTER <b>127.55 239.0</b>	UNICOM <b>122.8 (CTAF)</b>
------------------------	---------------------------------------	-------------------------------



ELEV 533
REIL Rwys 16 and 34
MIRL Rwy 16-34



CATEGORY	A	B	C	D
CIRCLING	1700-1¼ 1167 (1200-1¼)	1700-1½ 1167 (1200-1½)	2020-3 1487 (1500-3)	2060-3 1527 (1600-3)

NW-1, 22 FEB 2024 to 21 MAR 2024

NW-1, 22 FEB 2024 to 21 MAR 2024