

DALLAS, TEXAS

AL-742 (FAA)

24025

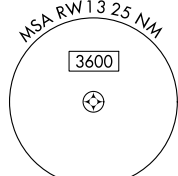
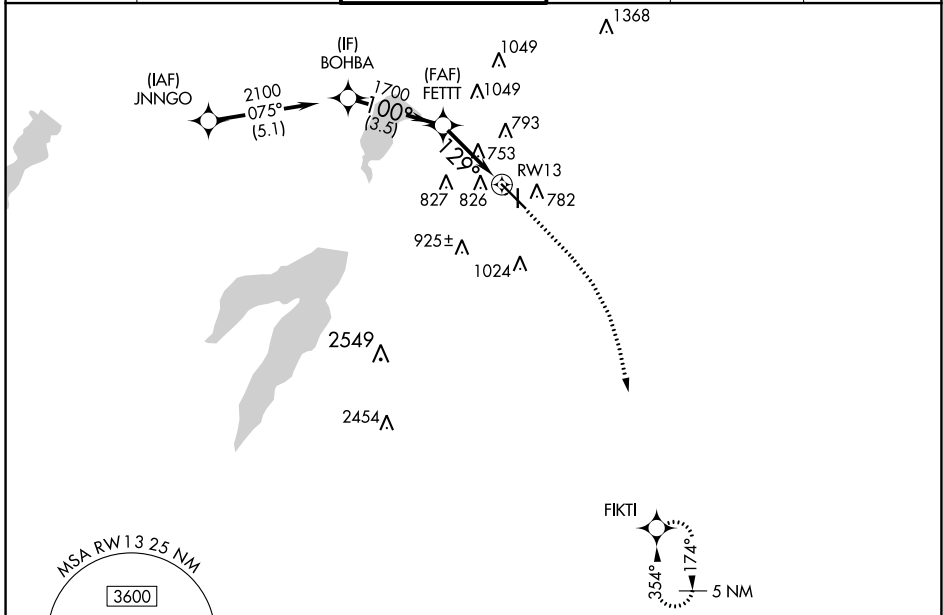
WAAS CH <b>78444</b> <b>W13A</b>	APP CRS <b>129°</b>	Rwy Idg TDZE <b>657</b> Apt Elev <b>661</b>	<b>5537</b> <b>657</b> <b>661</b>
--	------------------------	---	---

# RNAV (GPS) RWY 13

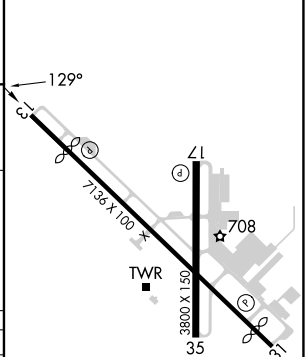
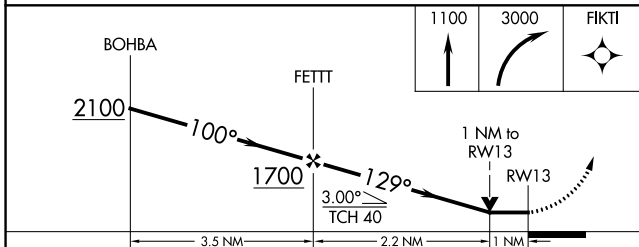
DALLAS EXEC (R.B.D)

RNP APCH-GPS.		MISSED APPROACH: Climb to 1100 then climbing right turn to 3000 direct FIKTI and hold.			
Rwy 13 helicopter visibility reduction below 3/4 SM NA.					

ATIS <b>126.35</b>	REGIONAL APP CON <b>125.2 343.65</b>	EXECUTIVE TOWER * <b>127.25 (CTAF)</b>	GND CON <b>119.475</b>	CLNC DEL <b>118.625</b>	UNICOM <b>122.95</b>
-----------------------	---	---	---------------------------	----------------------------	-------------------------



ELEV 661		TDZE 657
----------	--	----------



CATEGORY	A	B	C	D
LP MDA	1020-1 363 (400-1)			
LNAV MDA	1060-1 403 (400-1)	1060-1 1/8 403 (400-1 1/8)		
CIRCLING	1160-1 499 (500-1)	1220-1 559 (600-1)	1340-1 3/4 679 (700-1 3/4)	1400-2 1/4 739 (800-2 1/4)

REIL Rwy 13, 17, 31 and 35  
MIRL Rwy 13-31 and 17-35

DALLAS, TEXAS  
Orig 23FEB23

32°41'N-96°52'W

# RNAV (GPS) RWY 13

SC-2, 22 FEB 2024 to 21 MAR 2024

SC-2, 22 FEB 2024 to 21 MAR 2024