

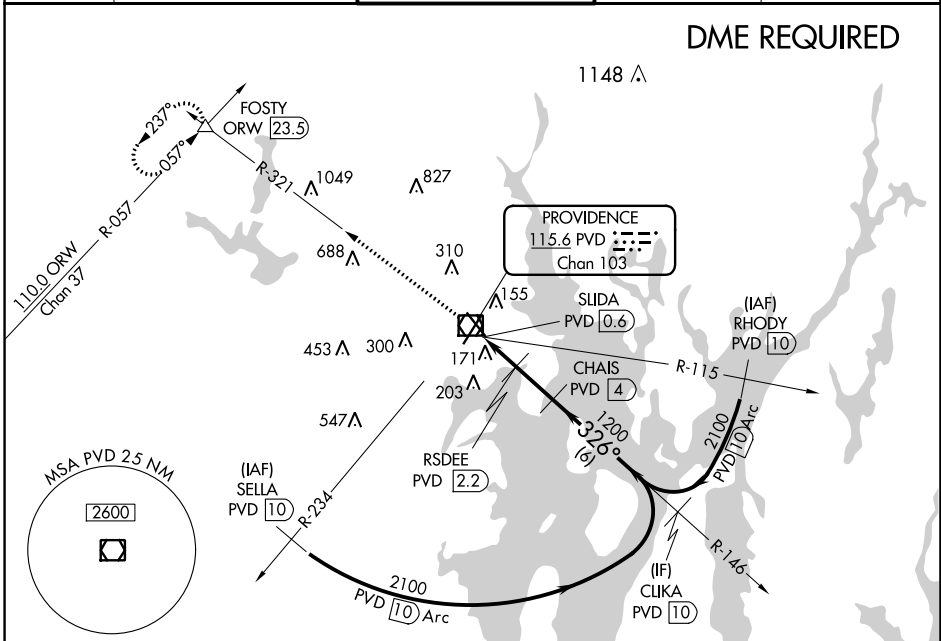
VOR/DME PVD	APP CRS	Rwy Idg	<b>6081</b>
<u>115.6</u>	<b>326°</b>	TDZE	<b>50</b>
Chan <b>103</b>		Apt Elev	<b>54</b>

# VOR Z RWY 34

RHODE ISLAND TF GREEN INTL (PVD)

	Rwy 34 helicopter visibility reduction below RVR 4000 NA.	MALSR	MISSED APPROACH: Climb to 2500 on PVD VOR/DME R-321 to FOSTY INT/ ORW 23.5 DME and hold.
	DME required. For inop ALS, increase Cat A/B visibility to RVR 5500, and Cat C/D to RVR 6000.		

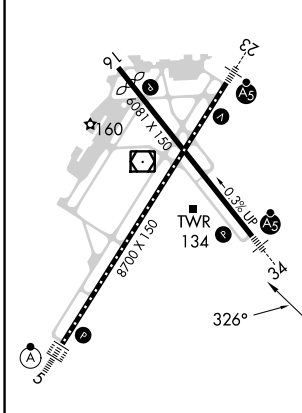
D-ATIS	PROVIDENCE APP CON *	PROVIDENCE TOWER *	GND CON	CLNC DEL
<b>124.2</b>	<b>123.675 244.875</b>	<b>120.7 (CTAF) 0 257.8</b>	<b>121.9 348.6</b>	<b>126.65 348.6</b>



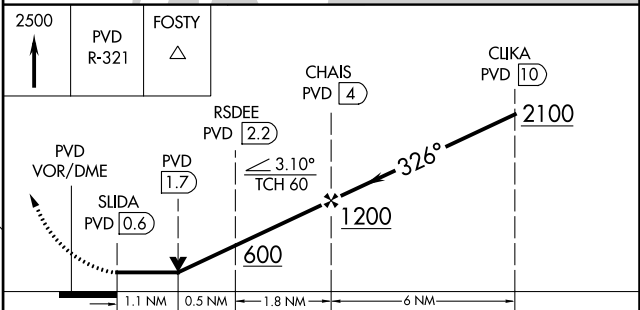
NE-1, 22 FEB 2024 to 21 MAR 2024

NE-1, 22 FEB 2024 to 21 MAR 2024

ELEV 54	<b>D</b>	TDZE 50
---------	----------	---------



TDZ/CL Rwy 5 **0**  
 REIL Rwy 16 **0**  
 HIRL Rwy 5-23 and 16-34 **0**



CATEGORY	A	B	C	D
S-34		440/40	390 (400-3/4)	
<b>C</b> CIRCLING	560-1 506 (600-1)	640-1 586 (600-1)	640-1½ 586 (600-1½)	860-2½ 806 (900-2½)