

TACAN POB Chan 85	APCH CRS 360°	Rwy ldg TDZE Arprt Elev	N/A N/A 218
-----------------------------	-------------------------	-------------------------------	--

AL-147 [USAF]

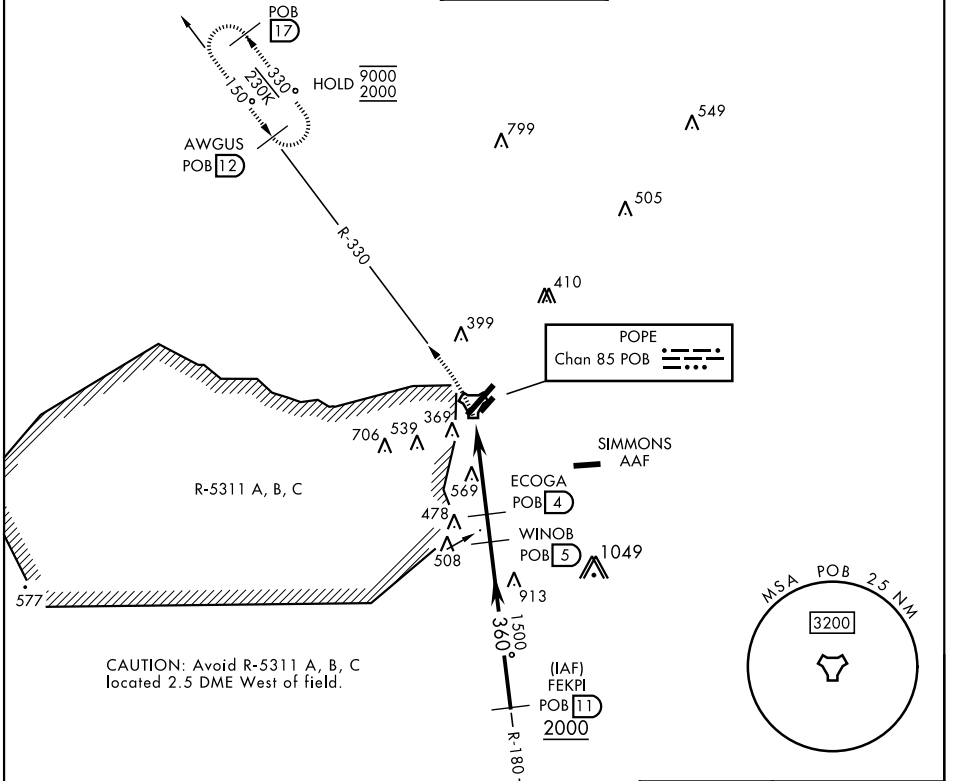
POPE AAF (KPOB)

RADAR required

* Circling not authorized SE of Rwy 5-23.

MISSED APPROACH: Climbing left turn to 2000 via POB R-330 to AWGUS and hold.

ATIS 132.3 353.725	FAYETTEVILLE APP CON 125.175 285.575 (271°- 090°) 133.0 290.25 (091°- 270°)	TOWER 135.025 291.1	GND CON 124.55 275.8	CLNC DEL 124.55 275.8
------------------------------	---	-------------------------------	--------------------------------	---------------------------------



SE-2, 22 FEB 2024 to 21 MAR 2024

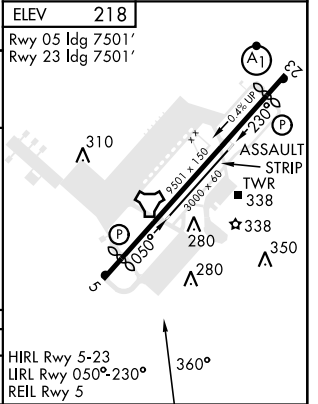
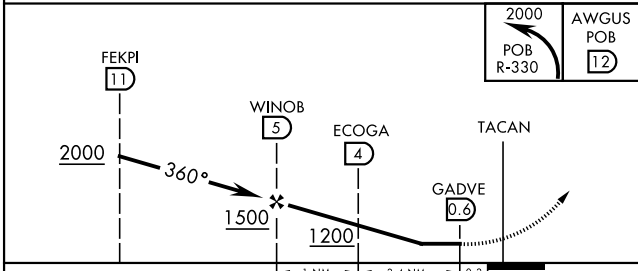
SE-2, 22 FEB 2024 to 21 MAR 2024

EMERG SAFE ALT 100 NM 5300

ELEV 218

Rwy 05 ldg 7501'

Rwy 23 ldg 7501'



CATEGORY	A	B	C	D	HIRL Rwy 5-23 LIRL Rwy 050°-230° REIL Rwy 5
CIRCLING *	840-1	622 (700-1)	920-2 702 (800-2)	1060-2¾ 842 (900-2¾)	

FORT LIBERTY, NORTH CAROLINA 35°10'N-79°01'W POPE AAF (KPOB)

Amdt 4 24MAY18