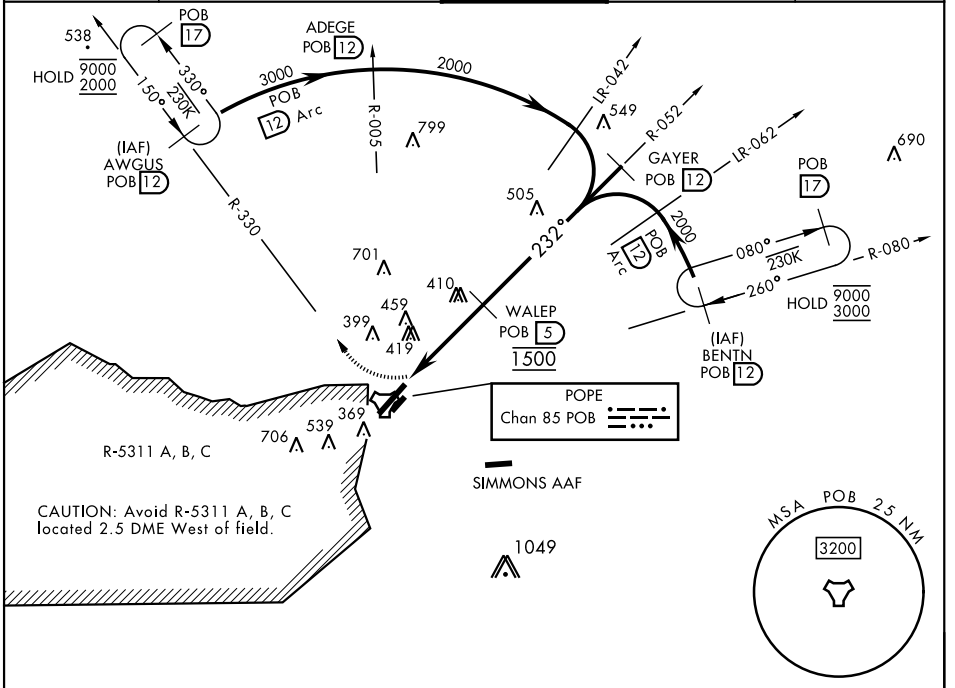


TACAN RWY 23

TACAN Chan 85	APCH CRS 232°	Rwy ldg TDZE 200 Arprt Elev 218	AL-147 [USAF]	POPE AAF (KPOB)
-------------------------	-------------------------	---	---------------	-----------------

RADAR required	ALSF-1 	MISSED APPROACH: Climbing right turn to 2000 direct AWGUS and hold.
<p>▼ * When ALS inop, increase CAT AB RVR to 55 and vis to 1 mile; CAT CD vis to 1 3/8 miles.</p> <p>** Circling not authorized SE of Rwy 5-23.</p>		

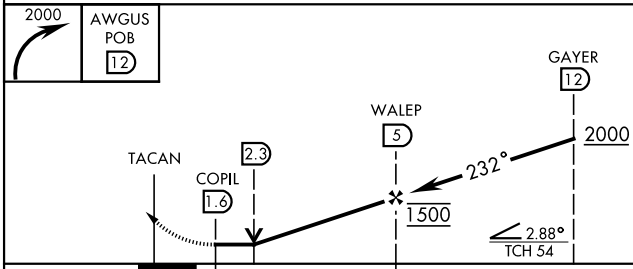
ATIS 132.3 353.725	FAYETTEVILLE APP CON 125.175 285.575 (271°-090°) 133.0 290.25 (091°-270°)	TOWER 135.025 291.1	GND CON 124.55 275.8	CLNC DEL 124.55 275.8
------------------------------	---	-------------------------------	--------------------------------	---------------------------------



SE-2, 22 FEB 2024 to 21 MAR 2024

SE-2, 22 FEB 2024 to 21 MAR 2024

ELEV 218	TDZE 200
Rwy 05 ldg 7501' Rwy 23 ldg 7501'	



CATEGORY	A	B	C	D
S-23 *	700/24 500 (500-1/2)		700/50 500 (500-1)	
CIRCLING **	760-1 542 (600-1)		920-2 702 (800-2)	1060-2 842 (900-2 3/4)

