

ILS or LOC RWY 23

| | | | | |
|---------------------------|-------------------------|--|---------------|-----------------|
| LOC I-POB 110.9 | APCH CRS 228° | Rwy Idg TDZE Arprt Elev 7501 200 218 | AL-147 [USAF] | POPE AAF (KPOB) |
|---------------------------|-------------------------|--|---------------|-----------------|

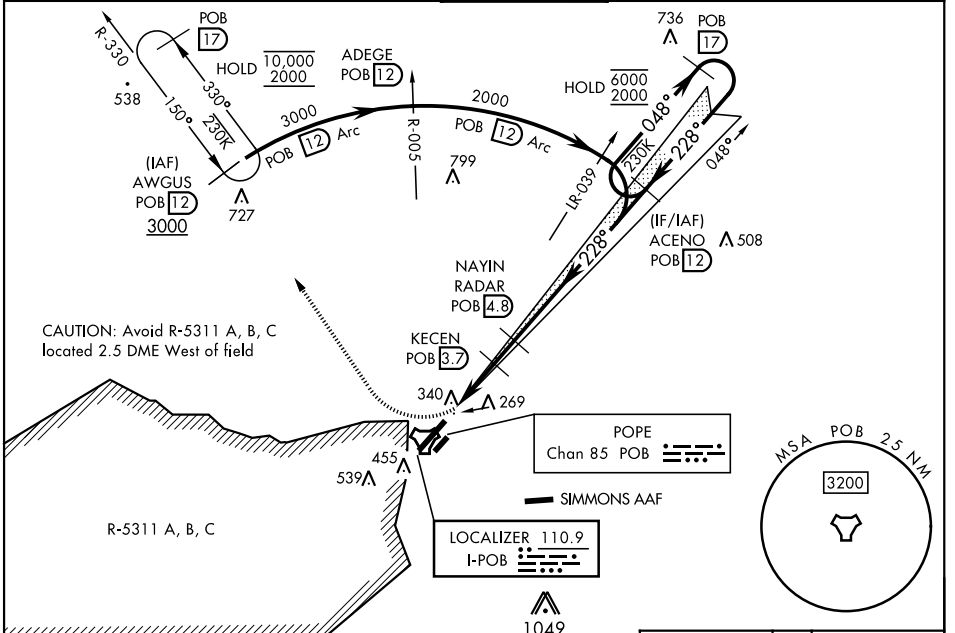
RADAR required

▼ * When ALS inop, increase RVR to 40 and vis to 3/4 mile.
 ** When ALS inop, increase CAT AB RVR to 55 and vis to 1 mile;
 CAT CD RVR to 60, vis to 1 1/8 miles.
 *** Circling not authorized SE of Rwy 5-23.
 **** When ALS inop, increase CAT AB RVR to 55 and vis to 1 mile;
 CAT CD vis to 1 1/4 miles.

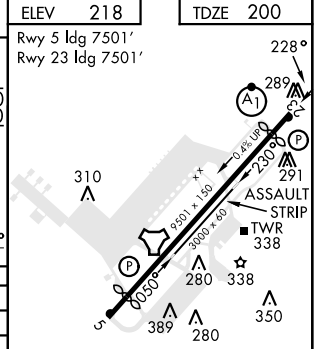
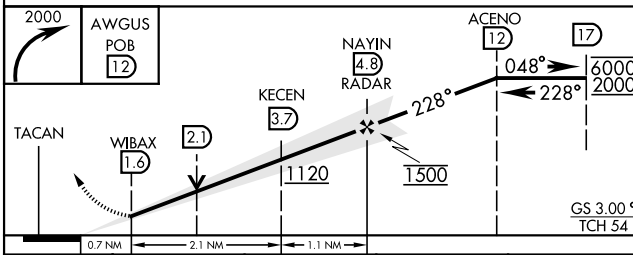
ALS F-1

MISSED APPROACH: Climbing right turn to 2000 direct AWGUS and hold. For acft not equipped with TACAN or suitable RNAV system with GPS: Climbing right turn to 2000 hdg 350°, expect RADAR vectors.

| | | | | |
|------------------------------|---|----------------------|---------------------|---------------------|
| FAYETTEVILLE APP CON | | TOWER | GND CON | CLNC DEL |
| ATIS 132.3 353.725 | 125.175 285.575 133.0 290.25 (271° - 090°) (091° - 270°) | 135.025 291.1 | 124.55 275.8 | 124.55 275.8 |



EMERG SAFE ALT 100 NM 5300 FROM "POB" TACAN



| | | | | |
|---------------------------|--------|---------------|-------------|-----------------|
| CATEGORY | A | B | C | D |
| S-ILS 23* | 400/24 | | 200 | (200-1/2) |
| S-LOC 23** | 620/24 | 420 (500-1/2) | 620/40 | 420 (500-3/4) |
| CIRCLING *** | 760-1 | 542 (600-1) | 920-2 | 1060-2 3/4 |
| | | | 702 (800-2) | 842 (900-2 3/4) |
| WITHOUT LAST STEPDOWN FIX | | | | |
| S-LOC 23 **** | 640/24 | 440 (500-1/2) | 640/45 | 440 (500-3/4) |

| | | | | | |
|-------------------|------|------|------|------|------|
| ELEV | 218 | TDZE | 200 | | |
| Rwy 5 Idg 7501' | | | | | |
| Rwy 23 Idg 7501' | | | | | |
| FAF to MAP 3.2 NM | | | | | |
| Knots | 60 | 90 | 120 | 150 | 180 |
| Min:Sec | 3:12 | 2:08 | 1:36 | 1:17 | 1:04 |

ILS or LOC RWY 23

SE-2, 22 FEB 2024 to 21 MAR 2024

SE-2, 22 FEB 2024 to 21 MAR 2024