

| | | | |
|--|------------------------|-----------------------------|---|
| WAAS CH 40426 W29A | APP CRS 291° | Rwy ldg TDZE Apt Elev | 8900 7078 7096 |
|--|------------------------|-----------------------------|---|

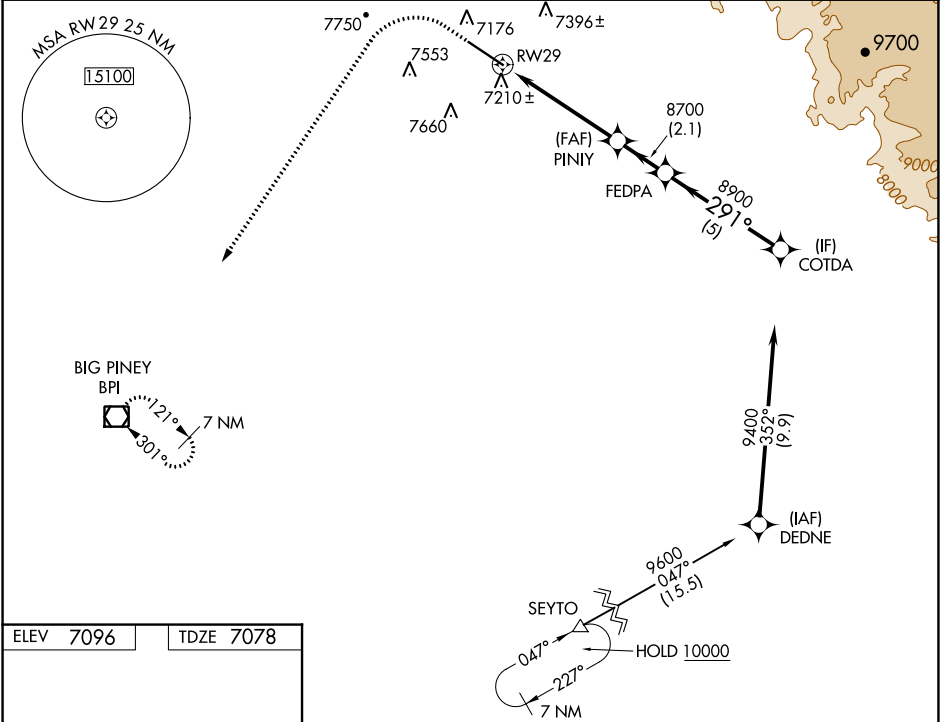
RNAV (GPS) RWY 29

RALPH WENZ FLD (PNA)

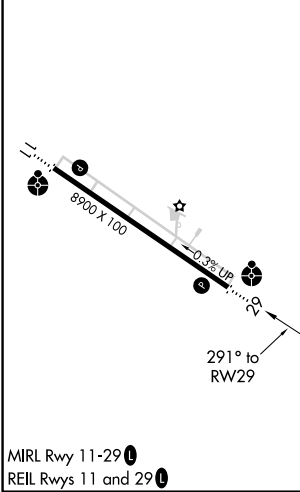
▼ Baro-VNAV NA. When local altimeter setting not received, use Big Piney altimeter setting and increase LPV DA to 7386 feet and all visibilities ¼ SM; increase LNAV/VNAV DA to 7664 feet and all visibilities ½ SM; increase all MDA 60 feet and LNAV Cots C/D visibility ¼ SM. Circling NA south of Rwy 11/29. DME/DME RNP-0.3 NA. Helicopter visibility reduction below ¾ SM NA. VDP NA with Big Piney altimeter setting.

ODALS MISSED APPROACH: Climb to 7600 then climbing left turn to 10000 direct BPI VOR/DME and hold.

| | | |
|--------------------------|--|-------------------------------|
| AWOS-3 118.325 | SALT LAKE CENTER 128.35 239.25 | UNICOM 122.8 (CTAF) |
|--------------------------|--|-------------------------------|



| | |
|-----------|-----------|
| ELEV 7096 | TDZE 7078 |
|-----------|-----------|



| | | | | |
|--------------|---------|------------------|--|-----------------------|
| 7600 | 10000 | BPI | VGSI and RNAV glidepath not coincident (VGSI Angle 2.83/TCH 40). | COTDA |
| | | | | |
| *LNAV only. | | *1.5 NM to RWY29 | PINIY | FEDPA |
| | | | 8700 | 8900 |
| 1.5 NM | | 3.5 NM | 2.1 NM | 5 NM |
| CATEGORY | A | B | C | D |
| LPV DA | 7328-¾ | | 250 (300-¾) | |
| LNAV/VNAV DA | 7606-1¾ | | 528 (600-1¾) | |
| LNAV MDA | 7600-1 | 522 (600-1) | 7600-1½ | 522 (600-1½) |
| CIRCLING | 7640-1 | 544 (600-1) | 7840-2¼ 744 (800-2¼) | 7980-3 884 (900-3) |

NW-1, 22 FEB 2024 to 21 MAR 2024

NW-1, 22 FEB 2024 to 21 MAR 2024