

WAAS CH 93825 W03A	APP CRS 027°	Rwy Idg 5500 TDZE 36 Apt Elev 36
--	------------------------	---

RNAV (GPS) RWY 3

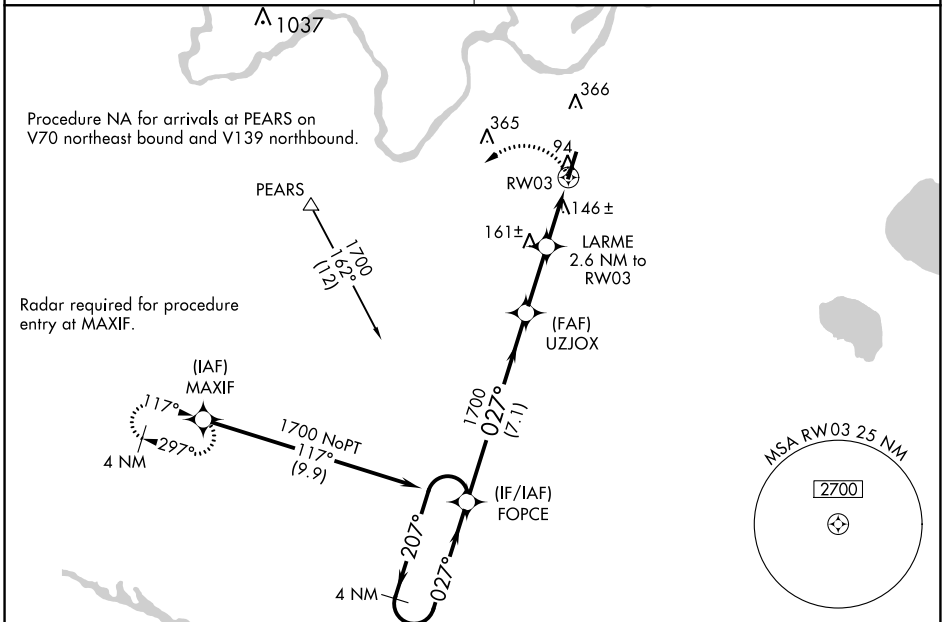
PLYMOUTH MUNI (PMZ)

⚠ Use Northeastern Rgnl altimeter setting; when not received, use Coastal Carolina Rgnl altimeter setting and increase all MDA 80 feet; increase all Cat C visibilities ¼ SM. When VGSi inop, procedure NA at night. DME/DME RNP-0.3 NA. Visibility reduction by helicopters NA.

MISSED APPROACH: Climbing left turn to 2000 direct MAXIF and hold.

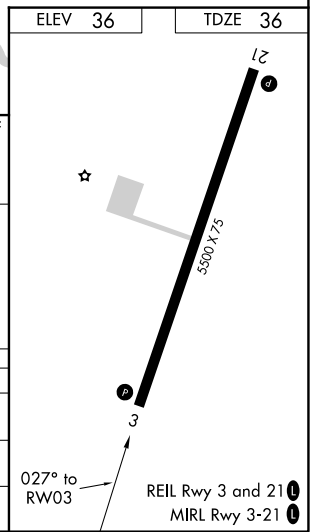
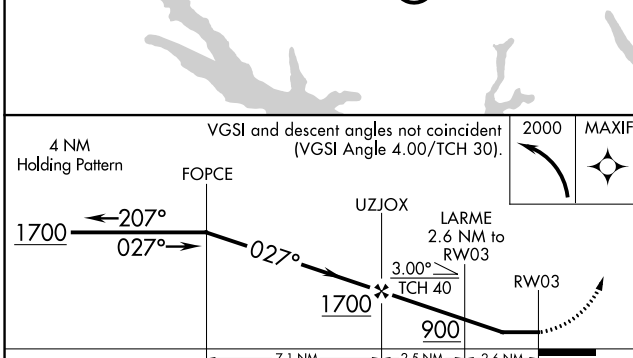
CHERRY POINT APP CON
119.35 377.175

UNICOM
122.8 (CTAF)



SE-2, 22 FEB 2024 to 21 MAR 2024

SE-2, 22 FEB 2024 to 21 MAR 2024



CATEGORY	A		B		C		D	
	MDA	440-1	404 (500-1)	440-1½	404 (500-1½)	460-1¼	424 (500-1¼)	NA
LP	MDA	440-1	404 (500-1)	440-1½	404 (500-1½)	460-1¼	424 (500-1¼)	NA
LNAV	MDA	460-1	424 (500-1)	460-1¼	424 (500-1¼)	720-2	684 (700-2)	NA
CIRCLING		520-1 484 (500-1)	720-1 684 (700-1)	720-2 684 (700-2)				NA