

RNAV 1-DME/DME/IRU or GPS.

RADAR required.

**TOP ALTITUDE:
ASSIGNED BY ATC**

ATIS
120.55
GND CON
121.9

POMPAÑO BEACH TOWER ★

125.4
MIAMI DEP CON
126.05 251.1

(HROCK2, HROCK) 23110
HROCK TWO DEPARTURE (RNAV)

AL-5972 (FAA)

POMPAÑO BEACH AIRPARK (P) (MIP)
POMPAÑO BEACH, FLORIDA

TAKEOFF MINIMUMS

Rwys 6, 24, 28, 33: Standard.

Rwy 10: 300-1¼ or standard with minimum climb of 265' per NM to 300.

Rwy 15: 300-2 or standard with minimum climb of 425' per NM to 500.

NOTE: Jet aircraft only.

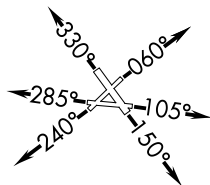
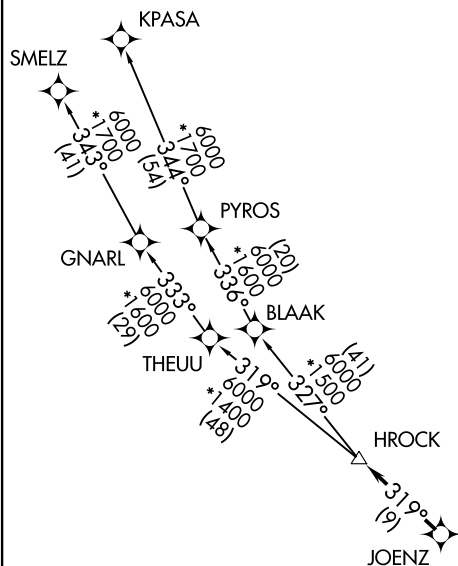
NOTE: Accelerate to 250K, if unable, advise ATC.

NOTE: Chart not to scale.

(NARRATIVE ON FOLLOWING PAGE)

HROCK TWO DEPARTURE (RNAV)
(HROCK2, HROCK) 20APR23

POMPAÑO BEACH, FLORIDA
POMPAÑO BEACH AIRPARK (P) (MIP)





DEPARTURE ROUTE DESCRIPTION

TAKEOFF RUNWAY 6: Climb on heading 060° or as assigned for RADAR vectors to cross JOENZ, thence. . . .

TAKEOFF RUNWAY 10: Climb on heading 105° or as assigned for RADAR vectors to cross JOENZ, thence. . . .

TAKEOFF RUNWAY 15: Climb on heading 150° or as assigned for RADAR vectors to cross JOENZ, thence. . . .

TAKEOFF RUNWAY 24: Climb on heading 240° or as assigned for RADAR vectors to cross JOENZ, thence. . . .

TAKEOFF RUNWAY 28: Climb on heading 285° or as assigned for RADAR vectors to cross JOENZ, thence. . . .

TAKEOFF RUNWAY 33: Climb on heading 330° or as assigned for RADAR vectors to cross JOENZ, thence. . . .

. . . .on track 319° to HROCK, then on assigned transition. Maintain ATC assigned altitude, expect filed altitude within 10 minutes after departure.

KPASA TRANSITION (HROCK2.KPASA)
SMELZ TRANSITION (HROCK2.SMELZ)

SE-3, 22 FEB 2024 to 21 MAR 2024

SE-3, 22 FEB 2024 to 21 MAR 2024