

(FRSBE2.FRSBE) 23110

AL-5972 (FAA)

POMPANO BEACH AIRPARK (PMP)

# FRSBE TWO DEPARTURE (RNAV)

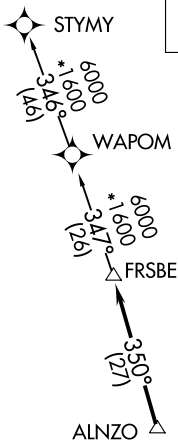
POMPANO BEACH, FLORIDA

**TOP ALTITUDE:  
ASSIGNED BY ATC**

RNAV 1-DME/DME IRU or GPS.  
RADAR required.

ATIS  
120.55  
GND CON  
121.9

POMPANO BEACH TOWER\*  
125.4 (CTAF)  
MIAMI DEP CON  
126.05 251.1



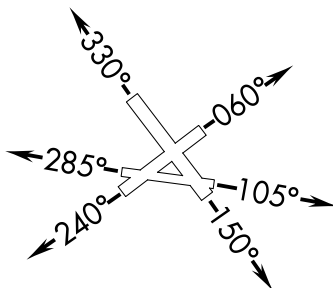
### TAKEOFF MINIMUMS

Rwys 6, 24, 28, 33: Standard.

Rwy 10: 300-1¼ or standard with minimum climb of 265' per NM to 300.

Rwy 15: 300-2 or standard with minimum climb of 425' per NM to 500.

- NOTE: Jet aircraft only.
- NOTE: Accelerate to 250K, if unable, advise ATC.
- NOTE: WAPOM Transition for KMCO, KDAB, and KMLB area arrivals.



NOTE: Chart not to scale.

## DEPARTURE ROUTE DESCRIPTION

**TAKEOFF RUNWAY 6:** Climb on heading 060° or as assigned by ATC for RADAR vectors to ALNZO, thence. . . .

**TAKEOFF RUNWAY 10:** Climb on heading 105° or as assigned by ATC for RADAR vectors to ALNZO, thence. . . .

**TAKEOFF RUNWAY 15:** Climb on heading 150° or as assigned by ATC for RADAR vectors to ALNZO, thence. . . .

**TAKEOFF RUNWAY 24:** Climb on heading 240° or as assigned by ATC for RADAR vectors to ALNZO, thence. . . .

**TAKEOFF RUNWAY 28:** Climb on heading 285° or as assigned by ATC for RADAR vectors to ALNZO, thence. . . .

**TAKEOFF RUNWAY 33:** Climb on heading 330° or as assigned by ATC for RADAR vectors to ALNZO, thence. . . .

. . . . on track 350° to FRSBE, then on (transition). Maintatin ATC assigned altitude, expect filed altitude 10 minutes after departure.

STYMY TRANSITION (FRSBE2.STYMY)

WAPOM TRANSITION (FRSBE2.WAPOM)

# FRSBE TWO DEPARTURE (RNAV)

(FRSBE2.FRSBE) 20APR23

POMPANO BEACH, FLORIDA

POMPANO BEACH AIRPARK (PMP)

SE-3, 22 FEB 2024 to 21 MAR 2024

SE-3, 22 FEB 2024 to 21 MAR 2024