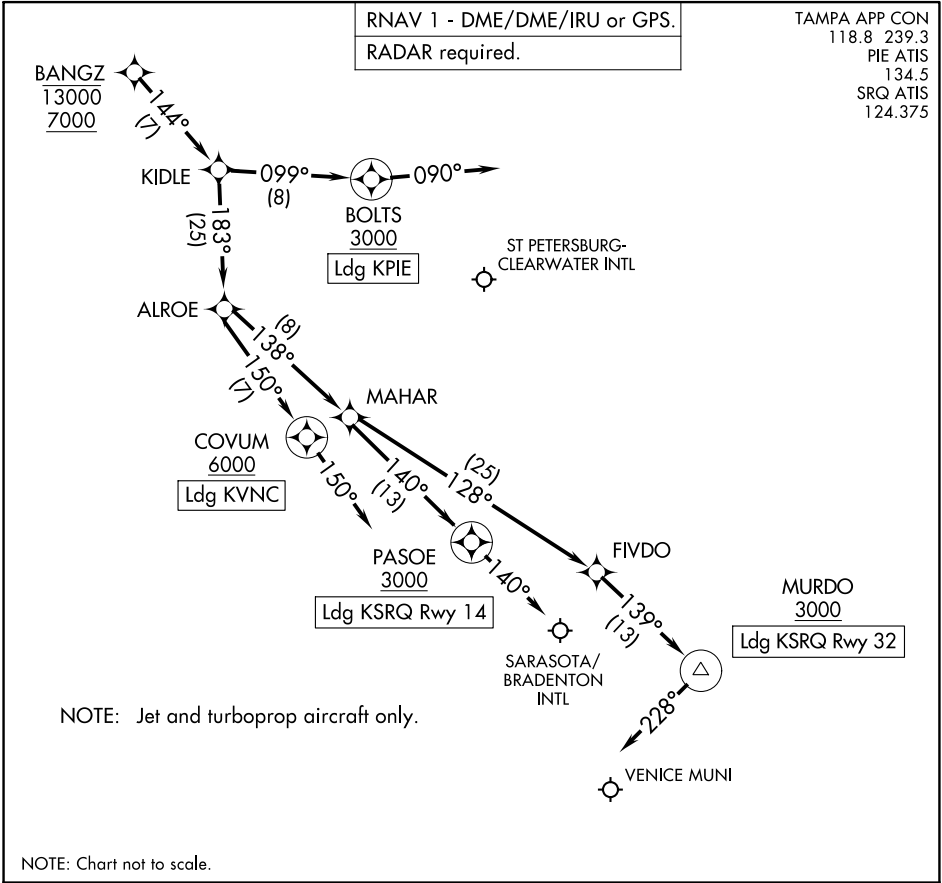


SE-3, 22 FEB 2024 to 21 MAR 2024

SE-3, 22 FEB 2024 to 21 MAR 2024



ARRIVAL ROUTE DESCRIPTION

LANDING KSRQ RUNWAY 14: From BANGZ on track 144° to KIDLE, then on track 183° to ALROE, then on track 138° to MAHAR, then on track 140° to cross PASOE at or above 3000, then on heading 140° or as assigned by ATC. Expect RADAR vectors to final approach course.

LANDING KSRQ RUNWAY 32: From BANGZ on track 144° to KIDLE, then on track 183° to ALROE, then on track 138° to MAHAR, then on track 128° to FIVDO, then on track 139° to cross MURDO at or above 3000, then on heading 228° or as assigned by ATC. Expect RADAR vectors to final approach course.

LANDING KPIE: From BANGZ on track 144° to KIDLE, then on track 099° to cross BOLTS at or above 3000, then on heading 090° or as assigned by ATC. Expect RADAR vectors to final approach course.

LANDING KVNC: From BANGZ on track 144° to KIDLE, then on track 183° to ALROE, then on track 150° to cross COVUM at or above 6000, then on track 150°.

Expect RADAR vectors to final approach course.