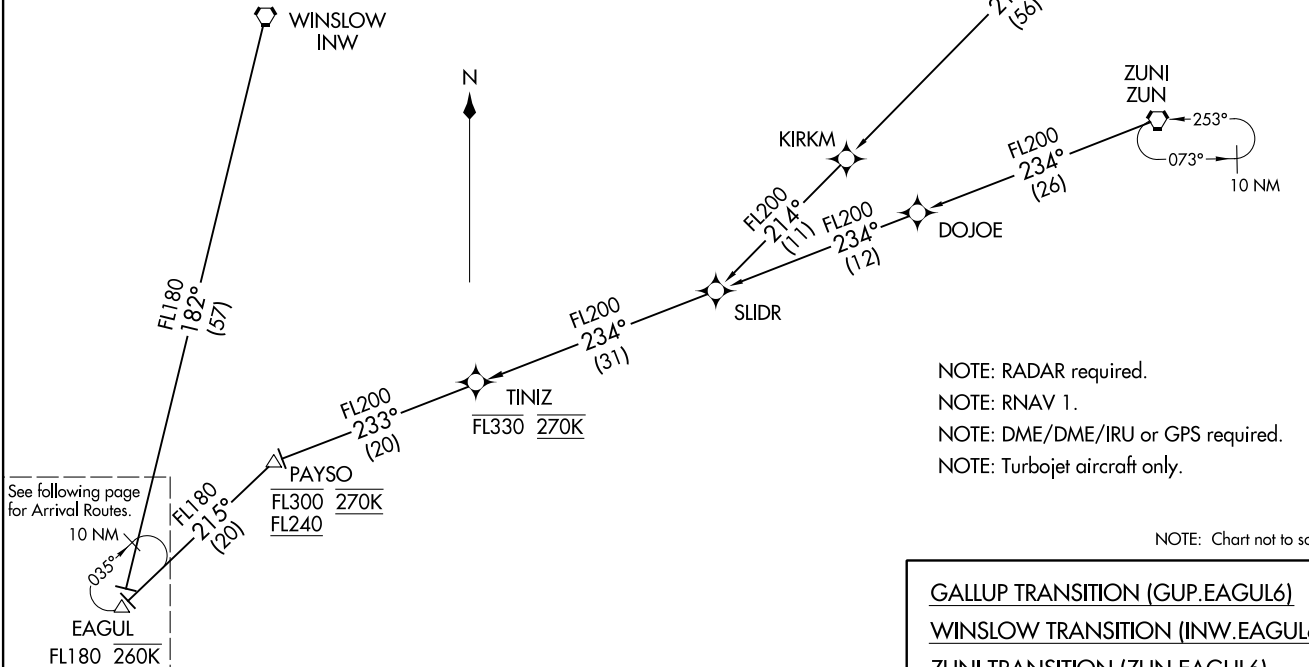


EAGUL SIX ARRIVAL (RNAV) Transition Routes
(EAGUL.EAGUL6) 18SEP14

PHOENIX APP CON
128.65 353.9
PHOENIX TOWER
118.7 278.8 (Rwy 8-26)
120.9 254.3 (Rwy 7L-25R, 7R-25L)
GND CON
119.75 269.2 (North)
132.55 269.2 (South)
D-ATIS
127.575

NOTE: GALLUP and ZUNI TRANSITIONS: For non-GPS equipped aircraft INW DME must be operational.
NOTE: LANDING EAST: For non-GPS equipped aircraft PXR and IWA DMEs must be operational.
NOTE: File GALLUP or ZUNI TRANSITIONS only. WINSLOW TRANSITION assigned by ATC for hazardous weather avoidance only.



(CONTINUED ON FOLLOWING PAGE)

NOTE: RADAR required.
NOTE: RNAV 1.
NOTE: DME/DME/IRU or GPS required.
NOTE: Turbojet aircraft only.

NOTE: Chart not to scale.

GALLUP TRANSITION (GUP.EAGUL6)
WINSLOW TRANSITION (INW.EAGUL6)
ZUNI TRANSITION (ZUN.EAGUL6)

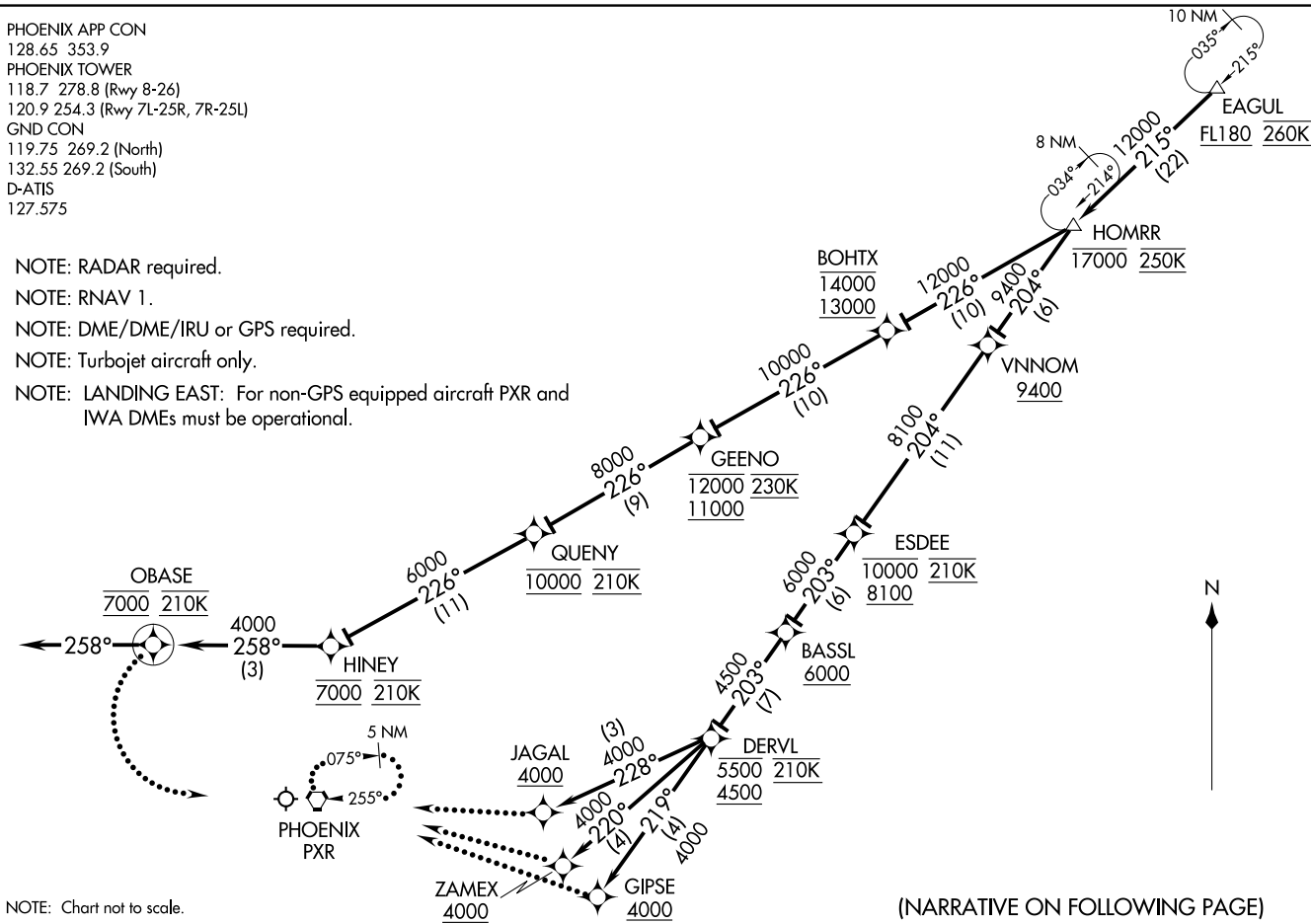
PHOENIX SKY HARBOR INTL (PHX)
PHOENIX, ARIZONA

(EAGUL.EAGUL6) 17117
EAGUL SIX ARRIVAL (RNAV) Transition Routes
AL-322 (FAA)

PHOENIX SKY HARBOR INTL (PHX)
PHOENIX, ARIZONA

PHOENIX APP CON
 128.65 353.9
 PHOENIX TOWER
 118.7 278.8 (Rwy 8-26)
 120.9 254.3 (Rwy 7L-25R, 7R-25L)
 GND CON
 119.75 269.2 (North)
 132.55 269.2 (South)
 D-ATIS
 127.575

- NOTE: RADAR required.
- NOTE: RNAV 1.
- NOTE: DME/DME/IRU or GPS required.
- NOTE: Turbojet aircraft only.
- NOTE: LANDING EAST: For non-GPS equipped aircraft PXR and IWA DMEs must be operational.



NOTE: Chart not to scale.

(NARRATIVE ON FOLLOWING PAGE)

EAGUL SIX ARRIVAL (RNAV) Arrival Routes
 (EAGUL EAGUL6) 18SEP14

PHOENIX SKY HARBOR INTL (PHX)
 PHOENIX, ARIZONA

(EAGUL EAGUL6) 17117
 EAGUL SIX ARRIVAL (RNAV) Arrival Routes
 AL-322 (FAA)

PHOENIX SKY HARBOR INTL (PHX)
 PHOENIX, ARIZONA