

WAAS CH <b>53711</b> <b>W26A</b>	APP CRS <b>256°</b>	Rwy Idg TDZE Apt Elev	<b>4997</b> <b>24</b> <b>26</b>
--	------------------------	-----------------------------	---------------------------------------

# RNAV (GPS) RWY 26

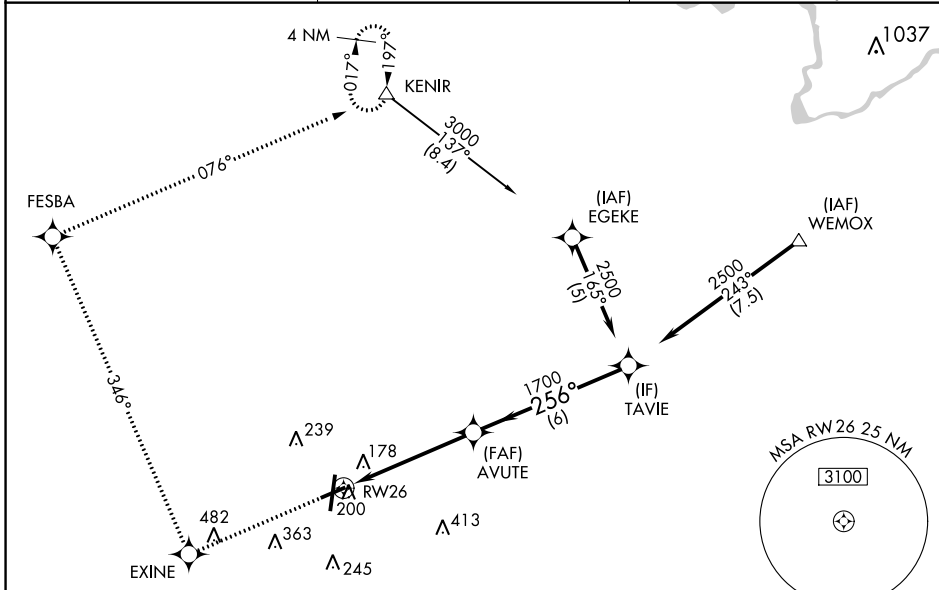
PITT-GREENVILLE (PGV)

RNP APCH - GPS.

▼ Baro-VNAV NA when using Washington altimeter setting. For uncompensated Baro-VNAV systems, LNAV/VNAV NA below -15°C or above 48°C. Rwy 26 helicopter visibility reduction below 3/4 SM NA. When local altimeter setting not received use Washington altimeter setting and increase LPV DA to 376 feet, visibility all Cats 1/8 SM; increase LNAV/VNAV DA to 505, visibility all Cats 1/8 SM; increase all MDAs 60 feet, LNAV visibility Cat C and D and Circling Cat D 1/4 SM.

MISSED APPROACH: Climb to 3000 direct EXINE and via 346° track to FESBA and via 076° track to KENIR and hold.

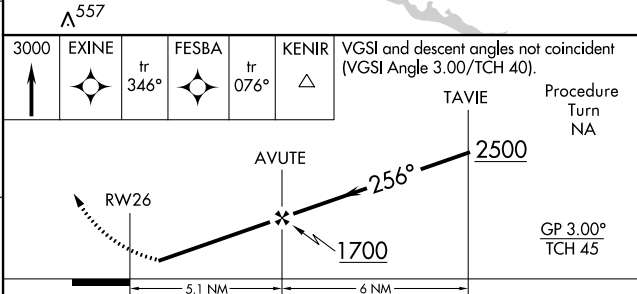
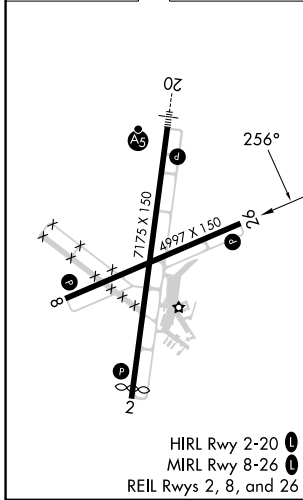
AWOS-3 <b>128.425</b>	WASHINGTON CENTER <b>123.85 279.65</b>	UNICOM <b>122.8 (CTAF) 0</b>
--------------------------	---	---------------------------------



SE-2, 22 FEB 2024 to 21 MAR 2024

SE-2, 22 FEB 2024 to 21 MAR 2024

ELEV 26	<b>D</b>	TDZE 24
---------	----------	---------



CATEGORY	A	B	C	D
LPV DA		335-7/8	311 (400-7/8)	
LNAV/VNAV DA		464-1 1/4	440 (500-1 1/4)	
LNAV MDA	520-1	496 (500-1)	520-1 3/8	496 (500-1 3/8)
CIRCLING	600-1 574 (600-1)	620-1 594 (600-1)	700-2 674 (700-2)	800-2 1/2 774 (800-2 1/2)