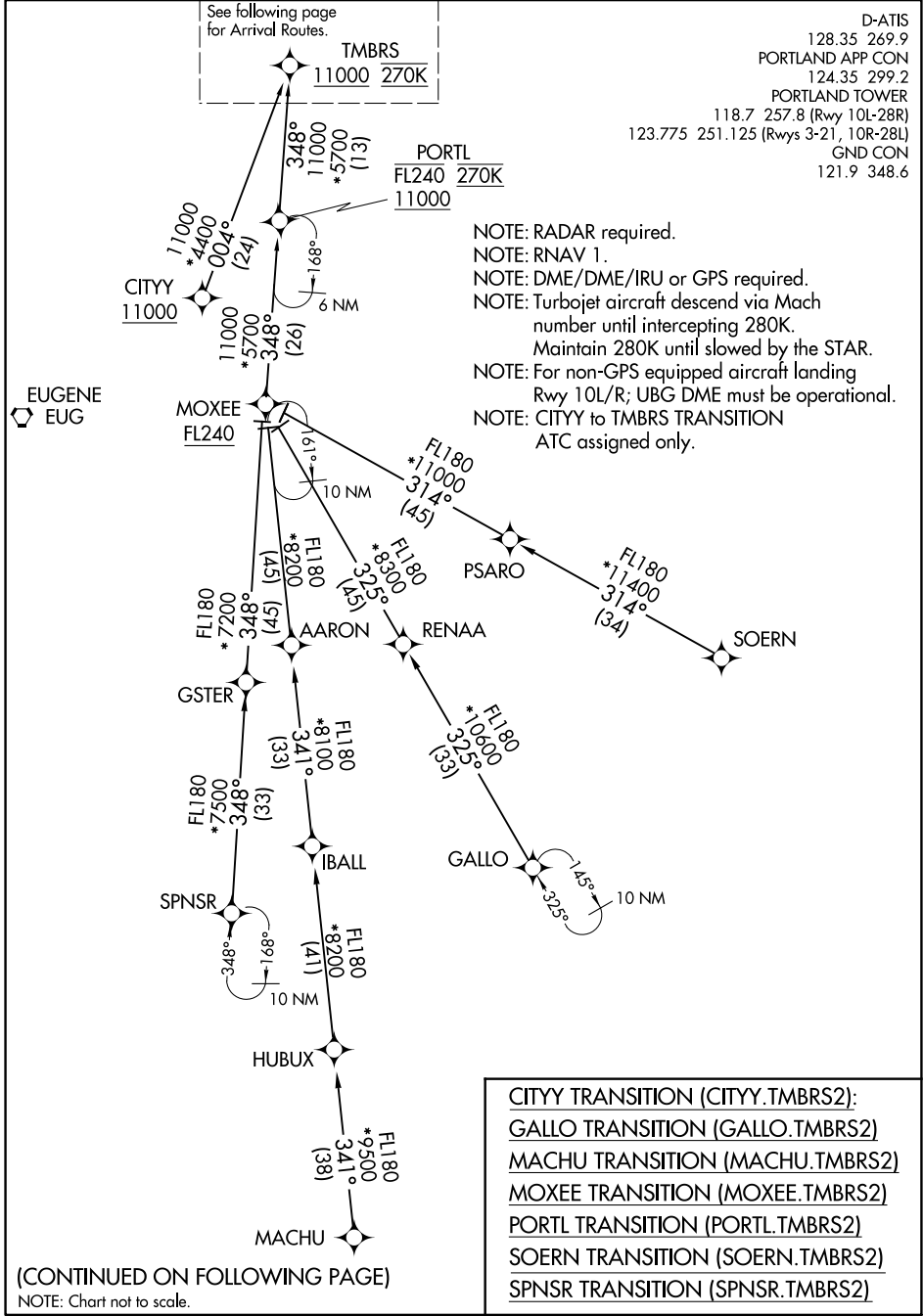


See following page
for Arrival Routes.

D-ATIS
128.35 269.9
PORTLAND APP CON
124.35 299.2
PORTLAND TOWER
118.7 257.8 (Rwy 10L-28R)
123.775 251.125 (Rwys 3-21, 10R-28L)
GND CON
121.9 348.6



NOTE: RADAR required.
 NOTE: RNAV 1.
 NOTE: DME/DME/IRU or GPS required.
 NOTE: Turbojet aircraft descend via Mach number until intercepting 280K. Maintain 280K until slowed by the STAR.
 NOTE: For non-GPS equipped aircraft landing Rwy 10L/R; UBG DME must be operational.
 NOTE: CITYY to TMBRS TRANSITION ATC assigned only.

- CITYY TRANSITION (CITYY.TMBRS2):
- GALLO TRANSITION (GALLO.TMBRS2)
- MACHU TRANSITION (MACHU.TMBRS2)
- MOXEE TRANSITION (MOXEE.TMBRS2)
- PORTL TRANSITION (PORTL.TMBRS2)
- SOERN TRANSITION (SOERN.TMBRS2)
- SPNSR TRANSITION (SPNSR.TMBRS2)

(CONTINUED ON FOLLOWING PAGE)
NOTE: Chart not to scale.

NW-1, 22 FEB 2024 to 21 MAR 2024

NW-1, 22 FEB 2024 to 21 MAR 2024

(TMBRS.TMBRS2) 19115

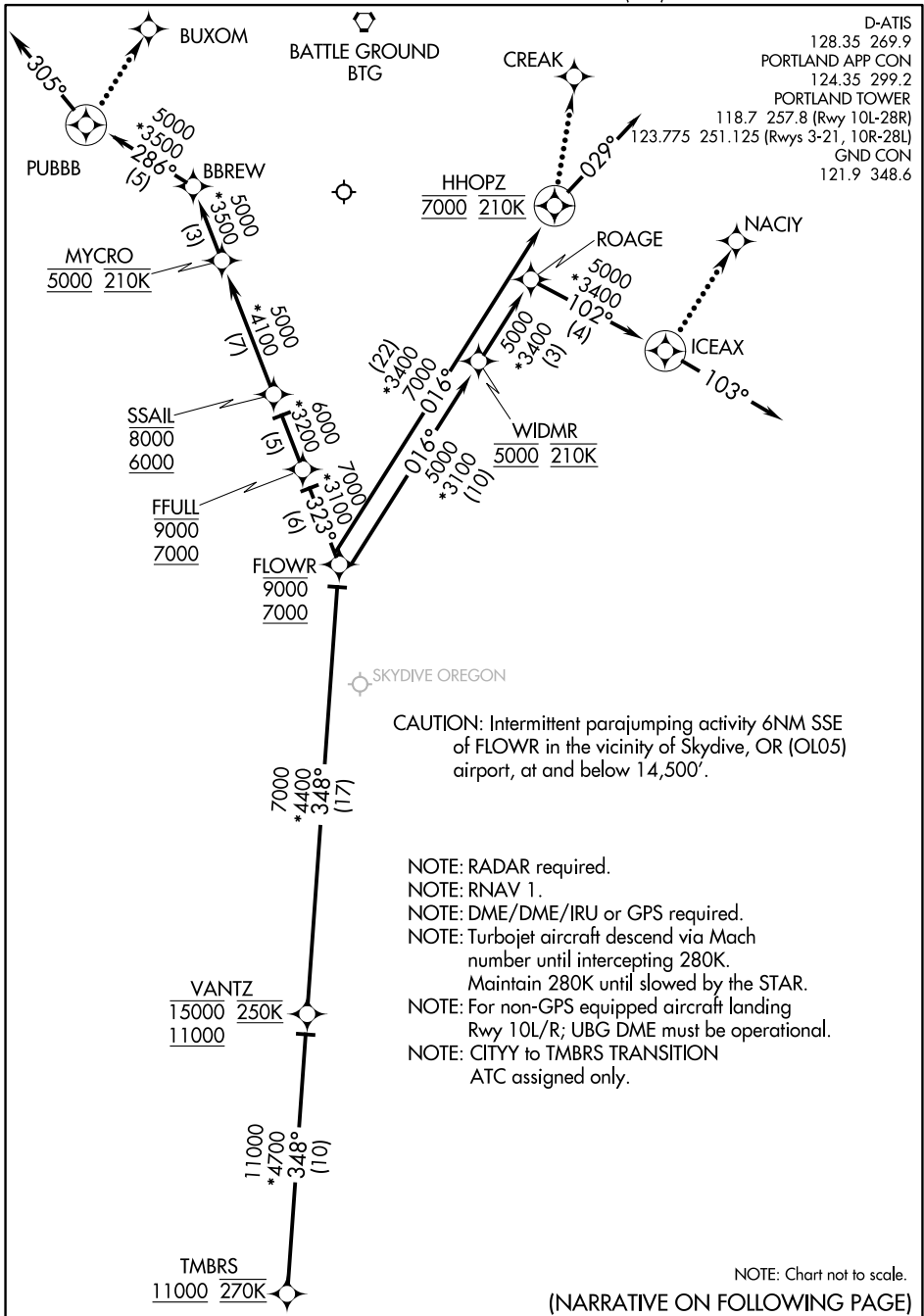
TMBRS TWO ARRIVAL (RNAV) Arrival Routes

AL-330 (FAA)

PORTLAND INTL (PDX)

PORTLAND, OREGON

D-ATIS
 128.35 269.9
 PORTLAND APP CON
 124.35 299.2
 PORTLAND TOWER
 118.7 257.8 (Rwy 10L-28R)
 123.775 251.125 (Rwys 3-21, 10R-28L)
 GND CON
 121.9 348.6



NW-1, 22 FEB 2024 to 21 MAR 2024

NW-1, 22 FEB 2024 to 21 MAR 2024

TMBRS TWO ARRIVAL (RNAV) Arrival Routes

(TMBRS.TMBRS2) 25JUN15

PORTLAND, OREGON
PORTLAND INTL (PDX)