

NDB PCW <b>423</b>	APP CRS <b>276°</b>	Rwy Idg TDZE Apt Elev	<b>5445</b> <b>588</b> <b>590</b>
-----------------------	------------------------	-----------------------------	---

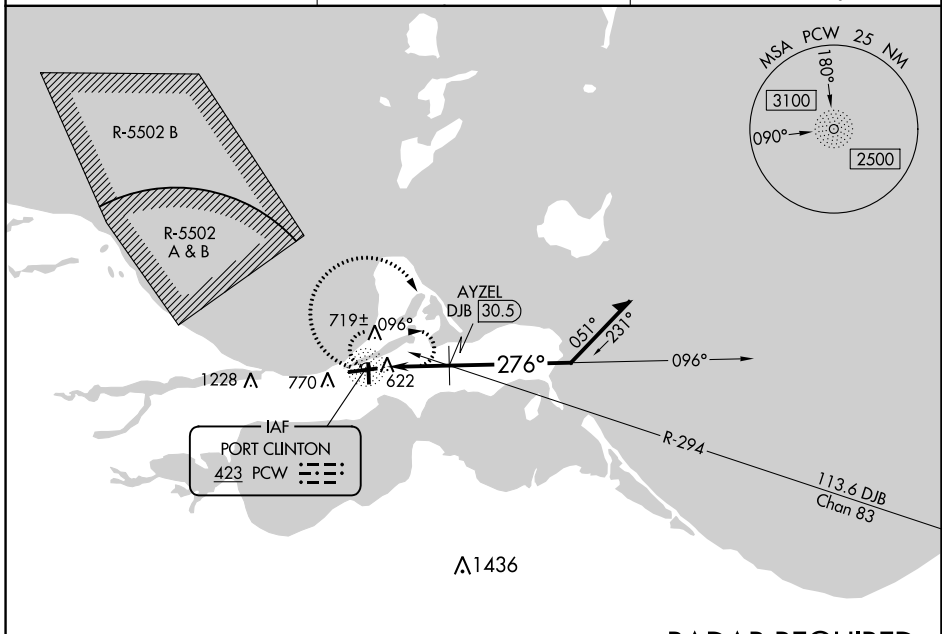
# NDB RWY 27

ERIE-OTTAWA INTL (PCW)

**NA** When local altimeter setting not received, use Toledo Executive altimeter setting and increase all MDA 80 feet and all visibilities ¼ mile. Helicopter visibility reduction below ¾ SM NA.

**MISSED APPROACH:**  
Climbing right turn to 2500 in PCW NDB holding pattern.

AWOS-3 <b>118.775</b>	CLEVELAND APP CON <b>126.35 346.325</b>	UNICOM <b>122.8 (CTAF) 0</b>
--------------------------	--	---------------------------------

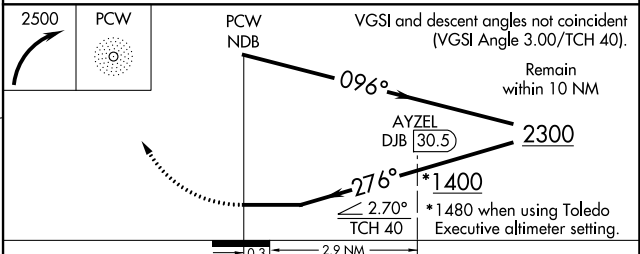
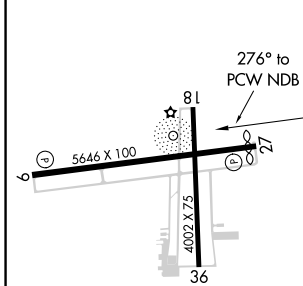


EC-2, 22 FEB 2024 to 21 MAR 2024

EC-2, 22 FEB 2024 to 21 MAR 2024

## RADAR REQUIRED

ELEV 590	TDZE 588
----------	----------



CATEGORY	A	B	C	D
S-27	1400-1 812 (900-1)	1400-1¼ 812 (900-1¼)	1400-2½	812 (900-2½)
<b>C</b> CIRCLING	1400-1 810 (900-1)	1400-1¼ 810 (900-1¼)	1400-2½ 810 (900-2½)	1580-3 990 (1000-3)
AYZEL FIX MINIMUMS (DME REQUIRED)				
S-27	1060-1	472 (500-1)	1060-1⅓	472 (500-1⅓)
<b>C</b> CIRCLING	1140-1	550 (600-1)	1180-1½ 590 (600-1½)	1580-3 990 (1000-3)

HIRL Rwy 9-27 **1**  
MIRL Rwy 18-36 **1**  
REL Rwy 9 and 27 **1**