

(MUJUD1.MUJUD) 23278

MUJUD ONE DEPARTURE (RNAV)

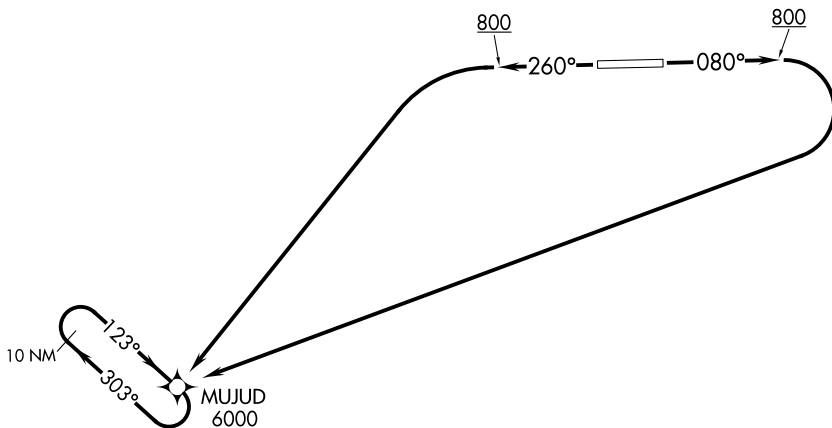
AL-10174 (FAA)

TELLER (TER)(PATE)
TELLER, ALASKA

**TOP ALTITUDE:
ASSIGNED BY ATC**

RNAV 1 - GPS.

ANCHORAGE CENTER
133.3 290.4
AWOS-3P
118.375
NOME RADIO
135.6

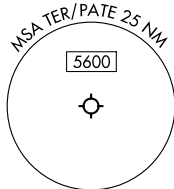


TAKEOFF MINIMUMS

Rwy 26: Standard.

Rwy 8: Standard with minimum climb of 285' per NM to 1700.

NOTE: Chart not to scale.



DEPARTURE ROUTE DESCRIPTION

TAKEOFF RUNWAY 8: Climb on heading 080° to 800, then climbing right turn direct MUJUD, thence. . . .

TAKEOFF RUNWAY 26: Climb on heading 260° to 800, then climbing left turn direct MUJUD, thence. . . .

. . . .continue climb in MUJUD holding pattern to at or above 6000 then maintain ATC assigned altitude before proceeding on course.

MUJUD ONE DEPARTURE (RNAV)

(MUJUD1.MUJUD) 05OCT23

TELLER, ALASKA
TELLER (TER)(PATE)

AK, 25 JAN 2024 to 21 MAR 2024

AK, 25 JAN 2024 to 21 MAR 2024