

WAAS CH 45743 W33A	APP CRS 333°	Rwy Idg TDZE Apt Elev	3100 192 192
--	------------------------	-----------------------------	---

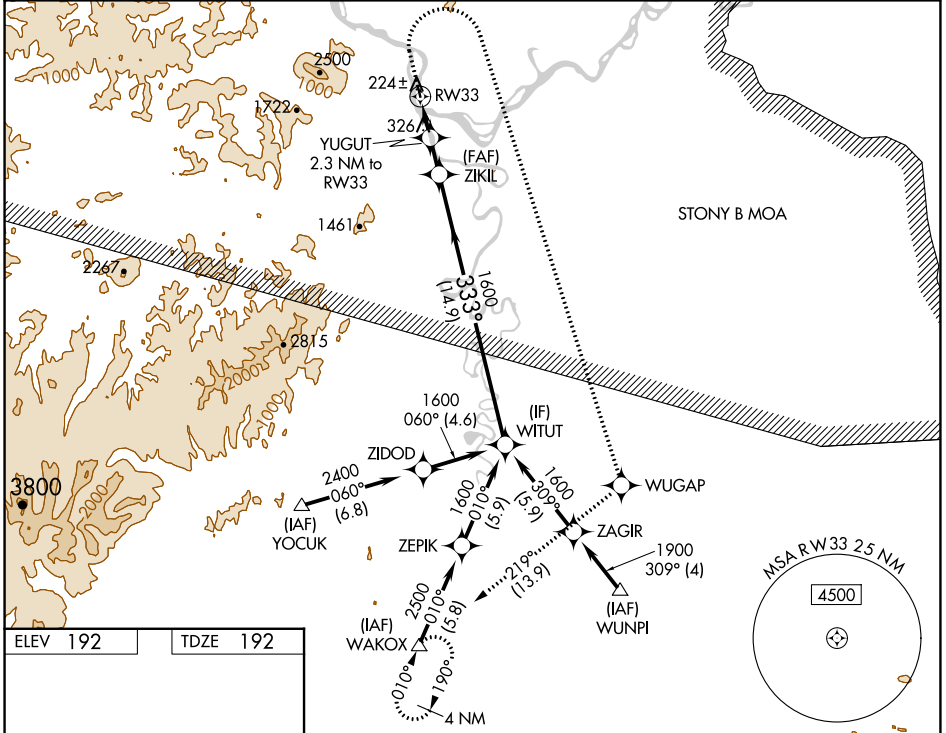
RNAV (GPS) RWY 33

SLEETMUTE (SLQ)(P)ASL

RNP APCH.
 ⚠ Circling NA west of Rwy 15-33. Procedure NA at night.
 Rwy 33 helicopter visibility reduction below 1 SM NA.
 ⚠ -37°C

MISSED APPROACH: Climb to 600, then climbing right turn to 3000 direct WUGAP, then track 219° to WAKOX and hold.

AWOS-3P 134.85	ANCHORAGE CENTER 128.5 379.9	UNICOM 122.8 (CTAF) 0
--------------------------	--	---------------------------------



ELEV 192	TDZE 192
MIRA Rwy 15-33 0	

600	3000	WUGAP	tr 219°	WAKOX	ZIKIL	WITUT
↑	↷	✦		△		
		YUGUT 2.3 NM to RWY 33 $\leq 3.00^\circ$ TCH 40				
		RWY 33		1600		
		2.3 NM		2 NM		14.9 NM
CATEGORY	A	B	C	D		
LP MDA	580-1	388 (400-1)	NA			
LNAV MDA	900-1	708 (800-1)	NA			
ⓐ CIRCLING	900-1 708 (800-1)	960-1 768 (800-1)	NA			

AK, 25 JAN 2024 to 21 MAR 2024

AK, 25 JAN 2024 to 21 MAR 2024