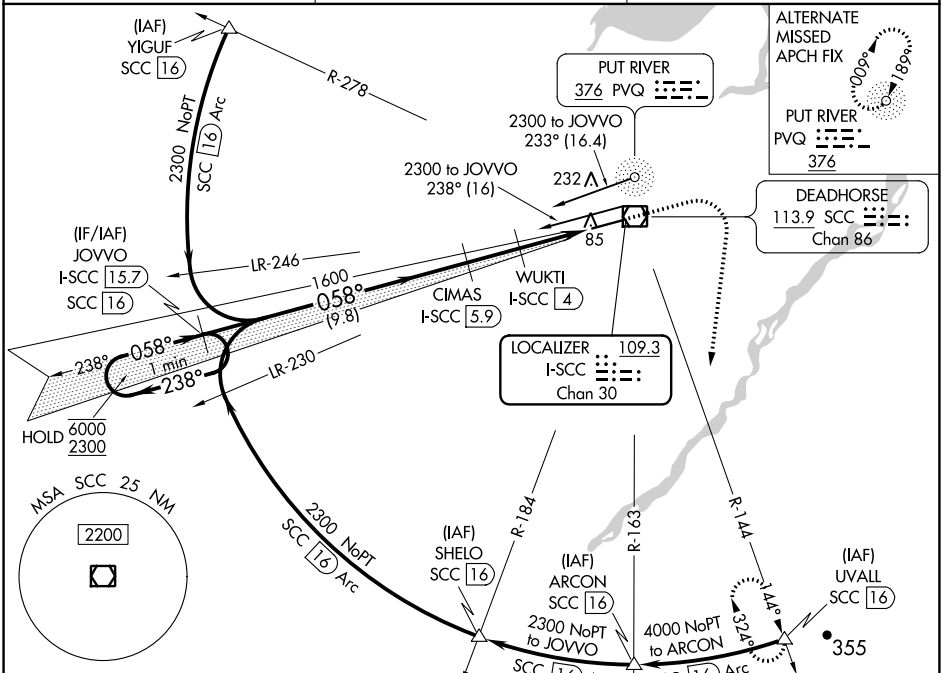


LOC/DME I-SCC <b>109.3</b> Chan <b>30</b>	APP CRS <b>058°</b>	Rwy Idg <b>6500</b> TDZE <b>67</b> Apt Elev <b>67</b>
---	------------------------	---

# ILS or LOC RWY 6 DEADHORSE (SCC) (PASC)

DME required. ▼ For inop ALS, increase S-ILS 6 Cat E visibility to RVR 4000 and ▲ S-LOC 6 Cats C/D/E to RVR 4500. # RVR 1800 authorized with use of FD or AP or HUD to DA.	MALSR 	MISSED APPROACH: Climb to 1500 then climbing right turn to 4000 on heading 170° and SCC VOR/DME R-144 to UVALL/SCC 16 DME and hold.
---	-----------	---

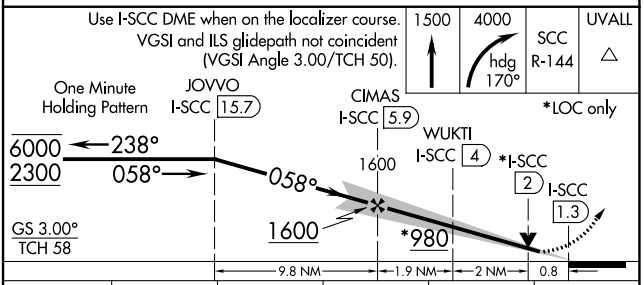
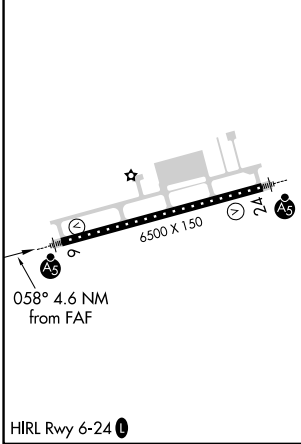
AFIS <b>118.4</b>	ANCHORAGE CENTER <b>134.4 370.9</b>	DEADHORSE RADIO <b>123.6 (CTAF) 0</b>
----------------------	--	--



AK, 25 JAN 2024 to 21 MAR 2024

AK, 25 JAN 2024 to 21 MAR 2024

ELEV 67	<b>D</b>	TDZE 67
---------	----------	---------



CATEGORY	A	B	C	D	E
S-ILS 6#	267/24 200 (200-1/2)				
S-LOC 6	360/24 293 (300-1/2)				
<b>C</b> CIRCLING	540-1 473 (500-1)	580-1 1/2 513 (600-1 1/2)	620-2 553 (600-2)		


LOC/DME I-SCC <b>109.3</b> Chan 30	APP CRS <b>238°</b>	Rwy Idg <b>6500</b> TDZE <b>66</b> Apt Elev <b>67</b>
--	------------------------	---

# LOC BC RWY 24

DEADHORSE (SCC) (PASC)

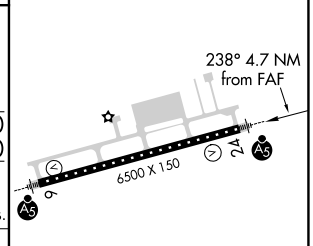
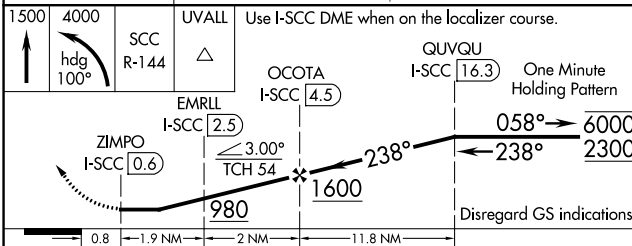
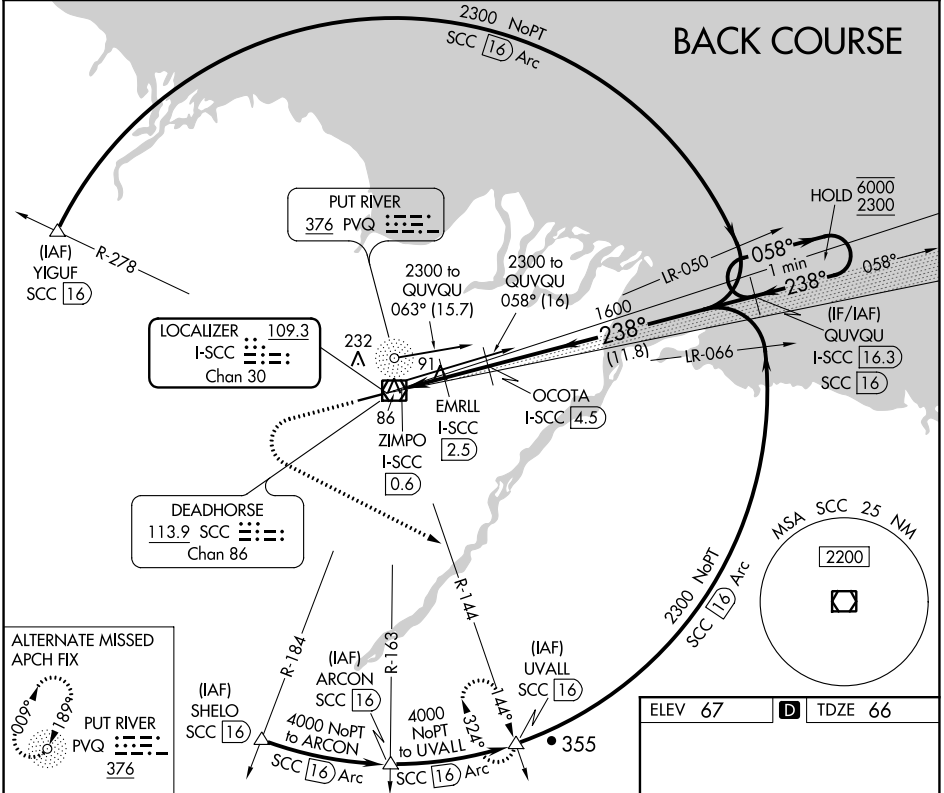
DME required.

**⚠** For inop ALS, increase S-24 Cat E visibility to RVR 5000.

MALSR 

MISSED APPROACH: Climb to 1500 then climbing left turn to 4000 on heading 100° and SCC VOR/DME R-144 to UVALL/SCC VOR/DME 16 DME and hold.

AFIS <b>118.4</b>	ANCHORAGE CENTER <b>134.4 370.9</b>	DEADHORSE RADIO <b>123.6 (CTAF)</b> 
----------------------	--	--



1500	4000	SCC	UVALL	Use I-SCC DME when on the localizer course.	
	hdg 100°	R-144		OCOTA I-SCC 4.5	QUVQU I-SCC 16.3
				EMRLL I-SCC 2.5	One Minute Holding Pattern
				ZIMPO I-SCC 0.6	
				3.00° TCH 54	Disregard GS indications.
				980	
				1600	
				238°	
				058°	
				6000	
				2300	
				238°	
				238°	

CATEGORY	A	B	C	D	E
S-24	340/24 274 (300-½)				
CIRCLING	540-1	473 (500-1)	580-1½ 513 (600-1½)	620-2	553 (600-2)

ELEV 67		TDZE 66
---------	---	---------

HIRL Rwy 6-24 

AK, 25 JAN 2024 to 21 MAR 2024


AK, 25 JAN 2024 to 21 MAR 2024

WAAS CH <b>69203</b> <b>W24A</b>	APP CRS <b>238°</b>	Rwy Idg TDZE <b>66</b> Apt Elev <b>67</b>	<b>6500</b>
--	------------------------	---	-------------

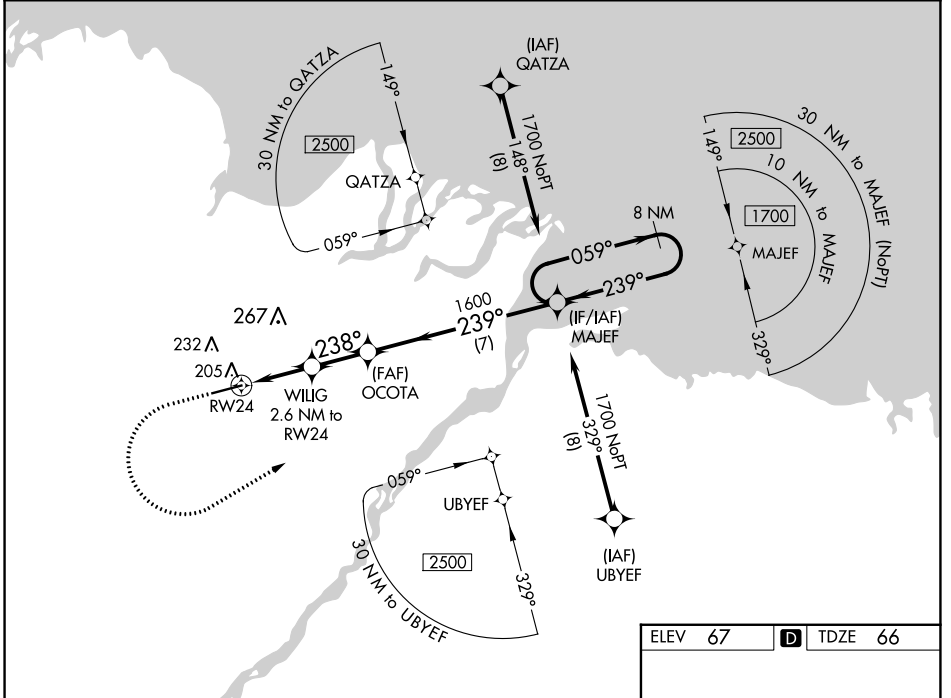
# RNAV (GPS) Z RWY 24

DEADHORSE (SCC) (PASC)

**▼** For uncompensated Baro-VNAV systems, LNAV/VNAV NA below -17°C (2°F) or above 54°C (130°F). DME/DME RNP-0.3 NA. For inop ALS, increase LPV Cat E visibility to RVR 4000, LNAV/VNAV all Cats visibility to RVR 5000, and LNAV Cat E visibility to RVR 6000. # RVR 1800 authorized with use of FD or AP or HUD to DA.

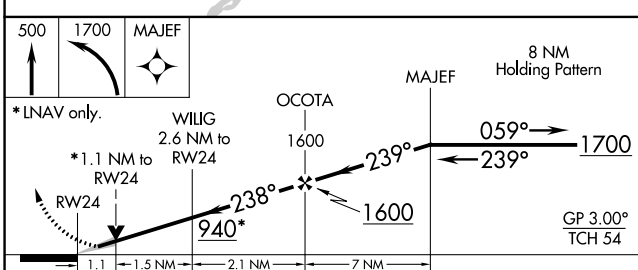
**MALSR**  
 MISSED APPROACH: Climb to 500 then climbing left turn to 1700 direct MAJEF and hold.

AFIS <b>118.4</b>	ANCHORAGE CENTER <b>134.4 370.9</b>	DEADHORSE RADIO <b>123.6 (CTAF) 0</b>
----------------------	--	--



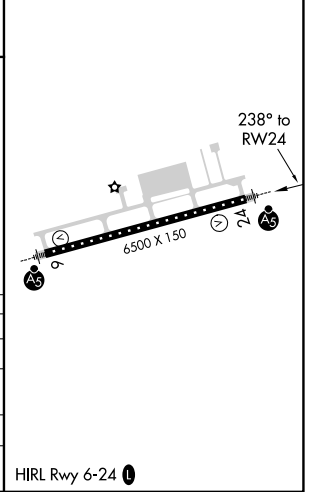
AK, 25 JAN 2024 to 21 MAR 2024

AK, 25 JAN 2024 to 21 MAR 2024



ELEV 67	<b>D</b> TDZE 66
---------	------------------

CATEGORY	A	B	C	D	E
LPV DA#	266/24		200 (200-½)		
LNAV/VNAV DA	381/30		315 (400-¾)		
LNAV MDA	460/24 394 (400-½)		460/35 394 (400-¾)		
<b>C</b> CIRCLING	540-1 473 (500-1)		580-1½ 513 (600-1½)		620-2 553 (600-2)



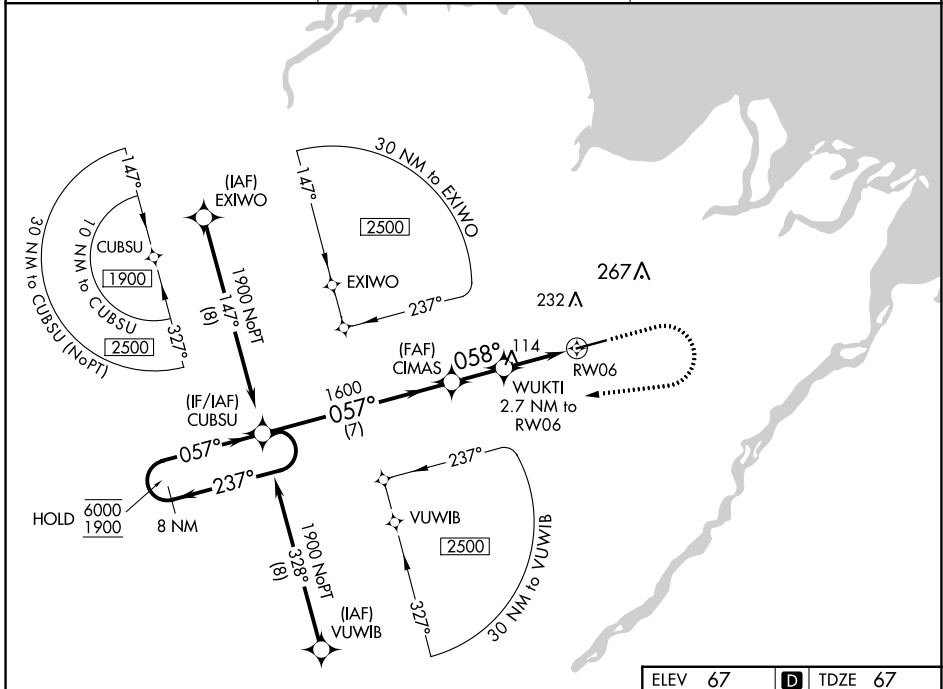
WAAS CH <b>49103</b> <b>W06A</b>	APP CRS <b>058°</b>	Rwy Idg <b>6500</b> TDZE <b>67</b> Apt Elev <b>67</b>
--	------------------------	---

# RNAV (GPS) Z RWY 6

DEADHORSE (SCC) (PASC)

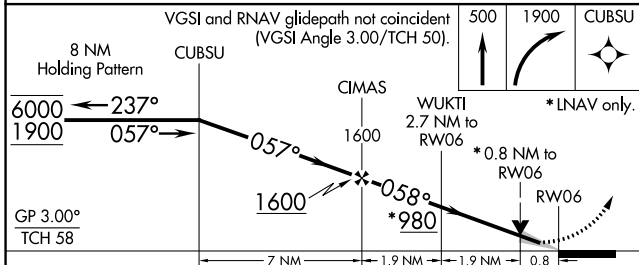
RNP APCH. ▼ ▲ For uncompensated Baro-VNAV systems, LNAV/VNAV NA below -17°C or above 54°C. For inop ALS, increase LPV Cat E visibility to RVR 4000, and increase LNAV/VNAV all Cats and LNAV Cats C/D/E visibility to RVR 4500. # RVR 1800 authorized with use of FD or AP or HUD to DA.	MALS R AS	MISSED APPROACH: Climb to 500 then climbing right turn to 1900 direct CUBSU and hold.
--	--------------	---

AFIS <b>118.4</b>	ANCHORAGE CENTER <b>134.4 370.9</b>	DEADHORSE RADIO <b>123.6 (CTAF) 0</b>
----------------------	--	--



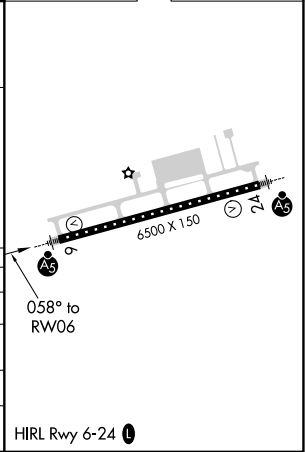
AK, 25 JAN 2024 to 21 MAR 2024

AK, 25 JAN 2024 to 21 MAR 2024



ELEV 67	D	TDZE 67
---------	---	---------

CATEGORY	A	B	C	D	E
LPV DA#		267/24	200 (200-½)		
LNAV/VNAV DA		369/24	302 (400-½)		
LNAV MDA		380/24	313 (400-½)		
CIRCLING	540-1	473 (500-1)	580-1½ 513 (600-1½)	620-2	553 (600-2)



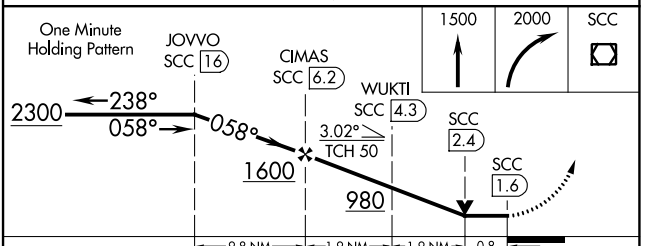
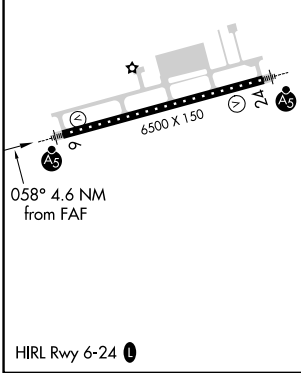
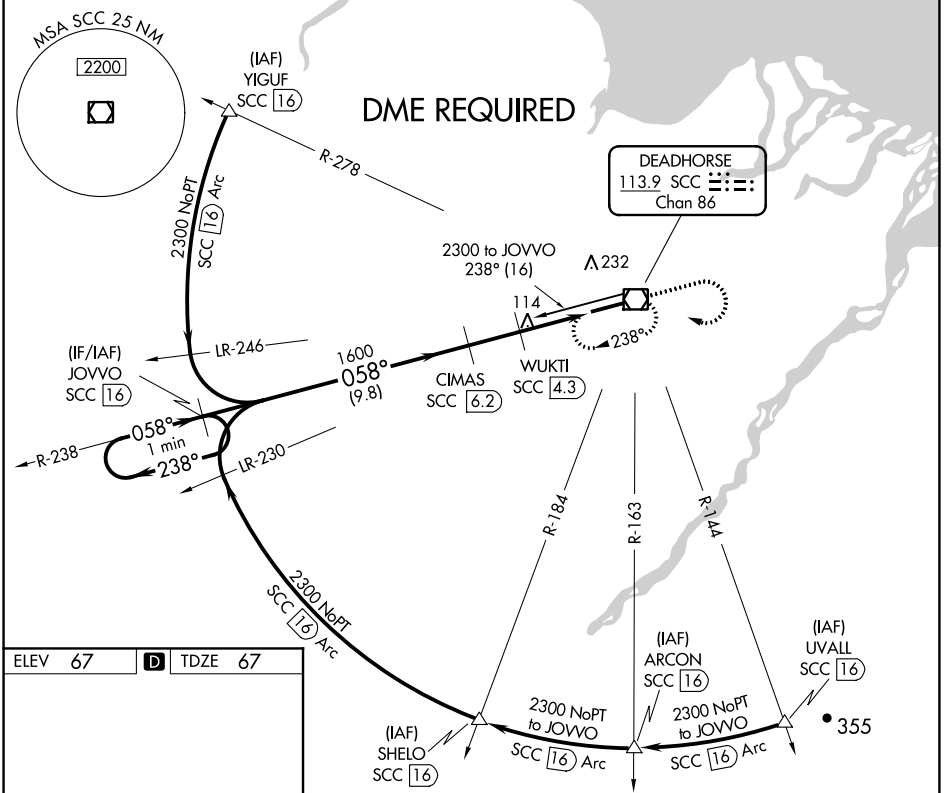
VOR/DME SCC <b>113.9</b> Chan <b>86</b>	APP CRS <b>058°</b>	Rwy Idg <b>6500</b> TDZE <b>67</b> Apt Elev <b>67</b>
---	------------------------	---

# VOR RWY 6

DEADHORSE (SCC) (PASC)

<p>DME required. For inop ALS, increase S-6 Cats C/D/E to RVR 4500.</p>	<p>MALSR</p>	<p>MISSED APPROACH: Climb to 1500 then climbing right turn to 2000 direct SCC VOR/DME and hold, continue climb-in-hold to 2000.</p>

AFIS <b>118.4</b>	ANCHORAGE CENTER <b>134.4 370.9</b>	DEADHORSE RADIO <b>123.6 (CTAF) 0</b>
----------------------	--	--



CATEGORY	A	B	C	D	E
S-6	380/24 313 (400-1/2)				
<b>C</b> CIRCLING	540-1	473 (500-1)	580-1 1/2 513 (600-1 1/2)	620-2	553 (600-2)

AK, 25 JAN 2024 to 21 MAR 2024

AK, 25 JAN 2024 to 21 MAR 2024

DEADHORSE, ALASKA

AL-5776 (FAA)

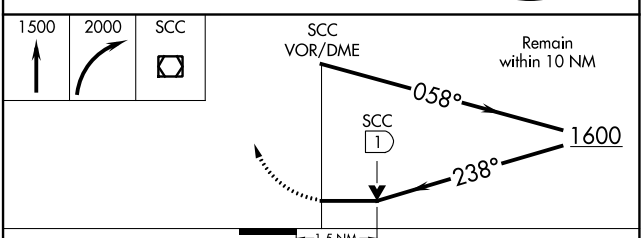
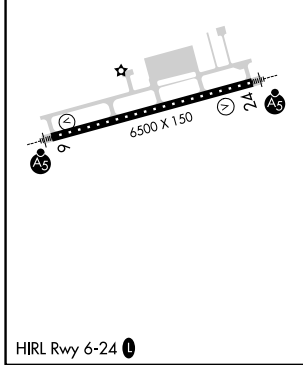
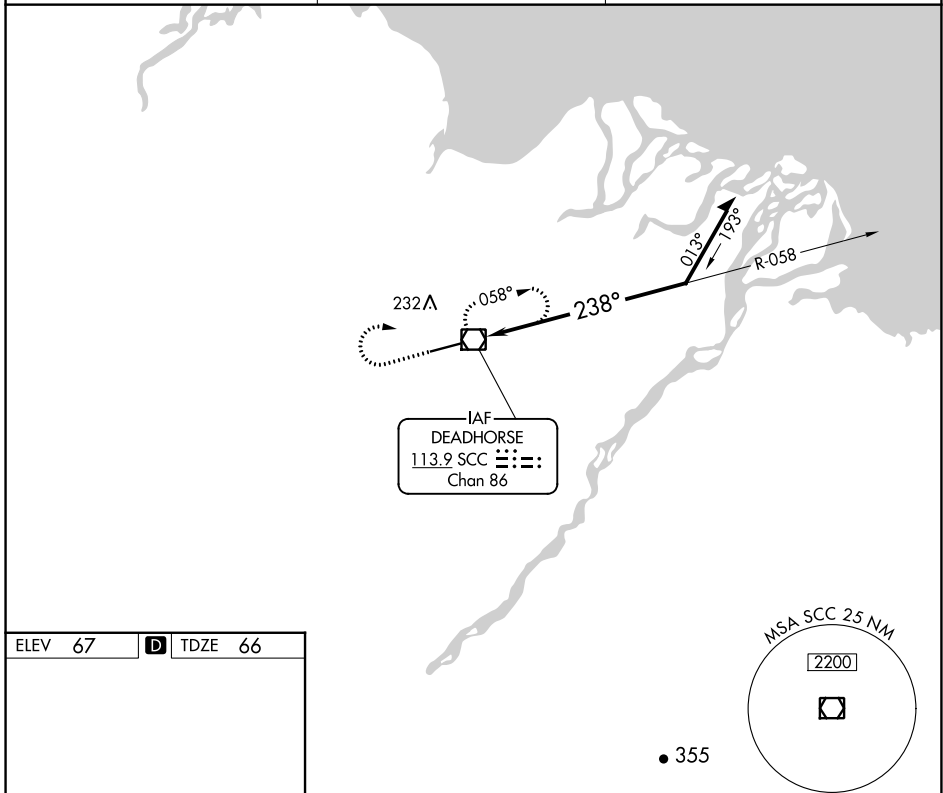
21168

VOR/DME SCC <b>113.9</b> Chan <b>86</b>	APP CRS <b>238°</b>	Rwy Idg TDZE Apt Elev	<b>6500</b> <b>66</b> <b>67</b>
---	------------------------	-----------------------------	---------------------------------------

**VOR Y RWY 24**  
DEADHORSE (SCC) (PASC)

AFIS <b>118.4</b>	ANCHORAGE CENTER <b>134.4 370.9</b>	DEADHORSE RADIO <b>123.6</b> (CTAF) <b>1</b>
		MALSR 

MISSED APPROACH: Climb to 1500 then climbing right turn to 2000 direct SCC VOR/DME and hold, continue climb-in-hold to 2000.



CATEGORY	A	B	C	D
S-24	580/24	514 (600-1/2)	580/55	514 (600-1)
<b>C</b> CIRCLING	580-1	513 (600-1)	580-1 1/2 513 (600-1 1/2)	620-2 553 (600-2)

DEADHORSE, ALASKA  
Amdt 6B 12OCT17

70°12'N-148°28'W

DEADHORSE (SCC) (PASC)  
**VOR Y RWY 24**

AK, 25 JAN 2024 to 21 MAR 2024

AK, 25 JAN 2024 to 21 MAR 2024

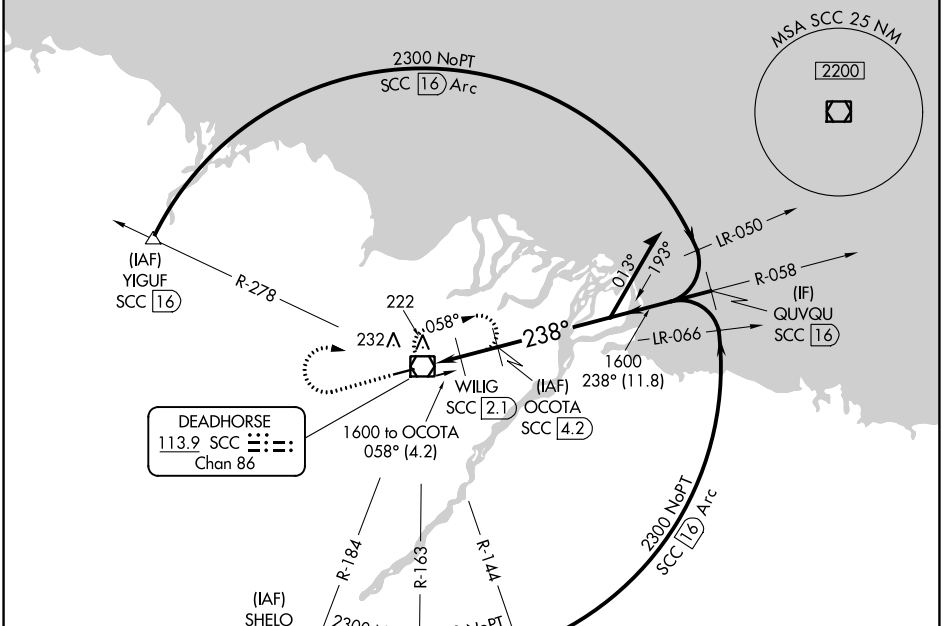
VOR/DME SCC <b>113.9</b> Chan <b>86</b>	APP CRS <b>238°</b>	Rwy Idg TDZE <b>66</b> Apt Elev <b>67</b>
---	------------------------	---

# VOR Z RWY 24

DEADHORSE (SCC) (PASC)

<p>DME required. For inop ALS, increase Cats C/D/E visibility to RVR 6000.</p>	<p>MALSR</p>	<p>MISSED APPROACH: Climb to 1500 then climbing right turn to 2000 direct SCC VOR/DME and hold, continue climb-in-hold to 2000.</p>
--	--------------	---

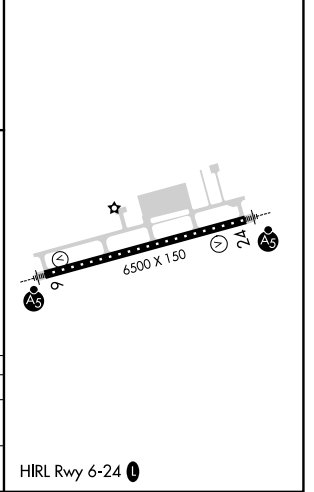
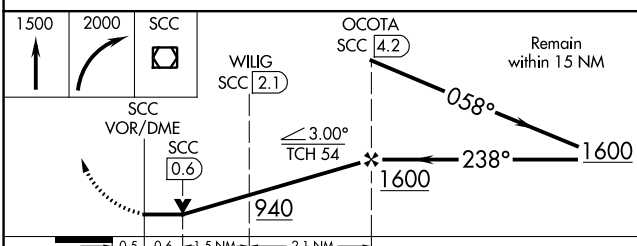
AFIS <b>118.4</b>	ANCHORAGE CENTER <b>134.4 370.9</b>	DEADHORSE RADIO <b>123.6 (CTAF) 0</b>
----------------------	--	--



DEADHORSE  
113.9 SCC  
Chan 86

ELEV 67	TDZE 66
---------	---------

**DME REQUIRED**



CATEGORY	A	B	C	D	E
S-24	480/24 414 (500-1/2)		480/40 414 (500-3/4)		
CIRCLING	540-1 473 (500-1)		580-1 1/2 513 (600-1 1/2)	620-2 553 (600-2)	

AK, 25 JAN 2024 to 21 MAR 2024

AK, 25 JAN 2024 to 21 MAR 2024