

WAAS CH 56244 W02A	APP CRS 022°	Rwy Idg TDZE Apt Elev	3501 334 339
--	------------------------	-----------------------------	---

RNAV (GPS) RWY 2

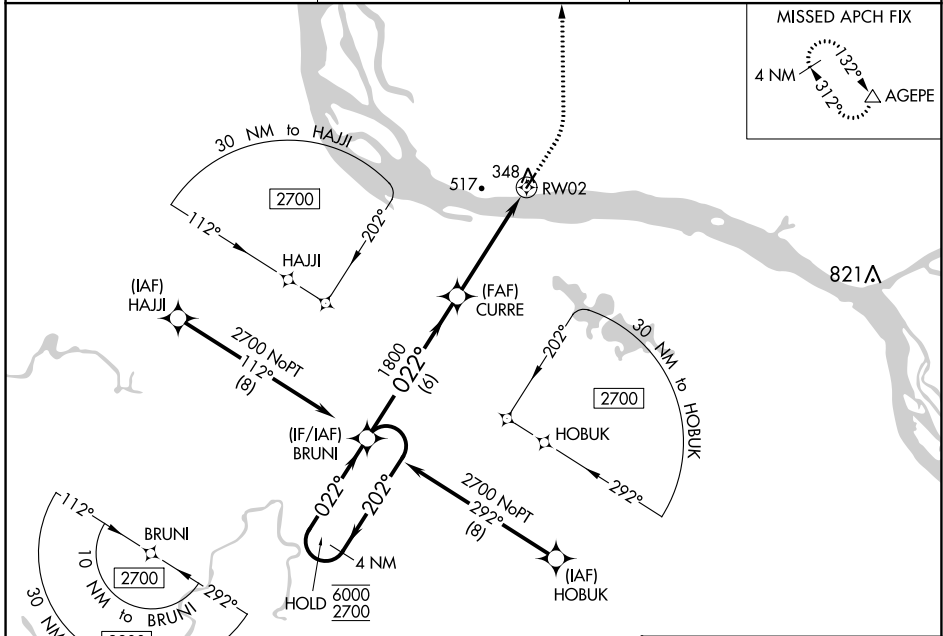
MOUNTAIN VILLAGE (MOU) (PAMO)

RNP APCH.

▼ For uncompensated Baro-VNAV systems, LNAV/VNAV NA below -25°C or above 54°C.

MISSED APPROACH: Climb to 760 then climbing left turn to 3000 direct AGEPE and hold, continue climb-in-hold to 3000.

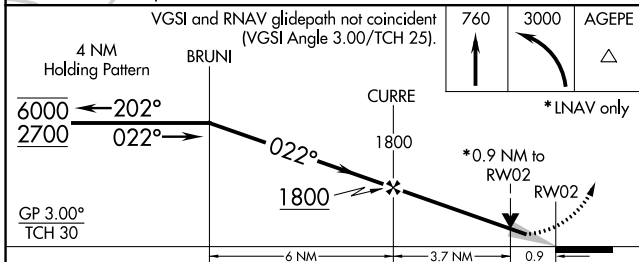
AWOS-3P 118.35	ANCHORAGE CENTER 124.0	CTAF 122.90
--------------------------	----------------------------------	-----------------------



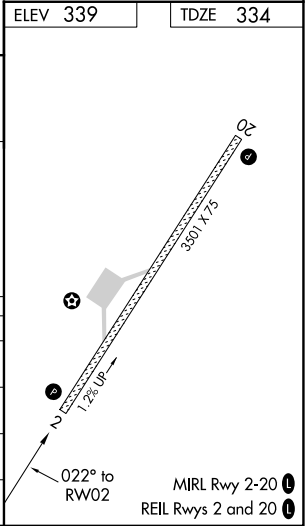
AK, 25 JAN 2024 to 21 MAR 2024

AK, 25 JAN 2024 to 21 MAR 2024

ELEV 339	TDZE 334
----------	----------



CATEGORY	A	B	C	D
LPV DA		534-1	200 (200-1)	
LNAV/VNAV DA		584-1	250 (300-1)	
LNAV MDA		600-1	266 (300-1)	
C CIRCLING	700-1 361 (400-1)	840-1 501 (600-1)	840-1½ 501 (600-1½)	900-2 561 (600-2)



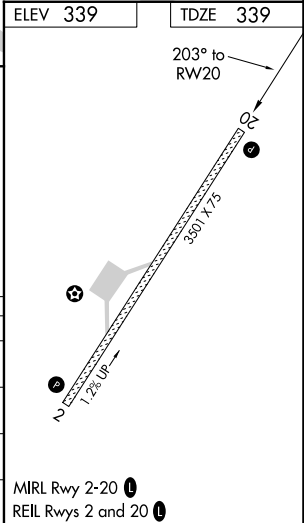
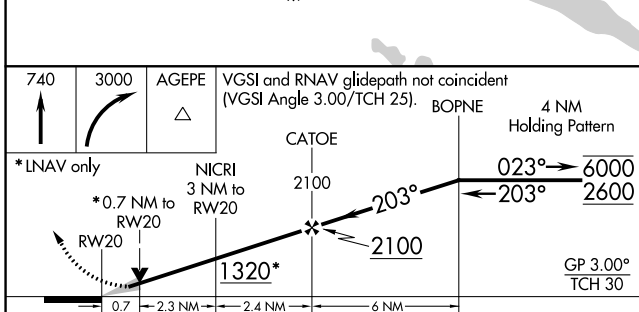
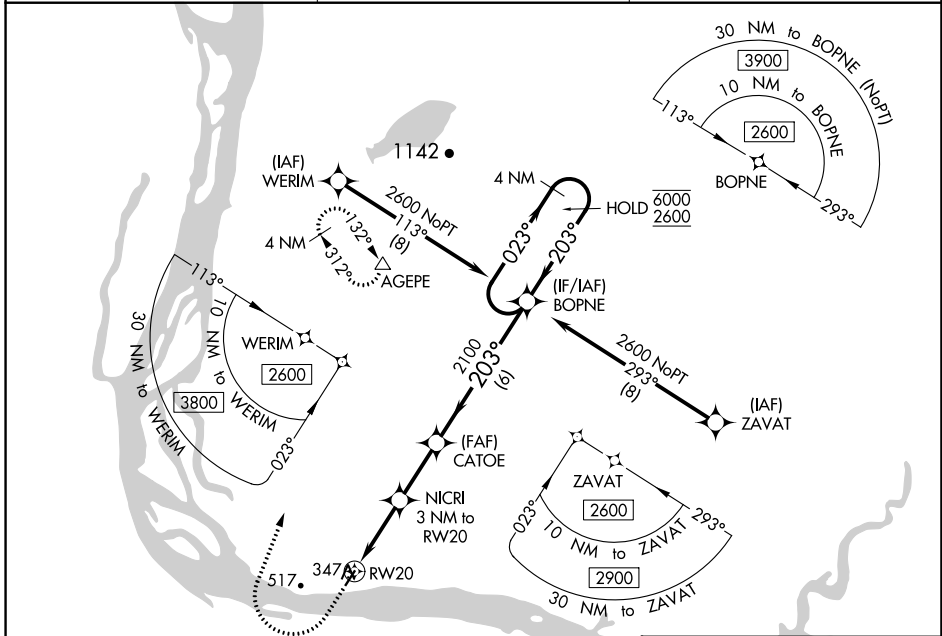
WAAS CH 60944 W20A	APP CRS 203°	Rwy Idg TDZE Apt Elev	3501 339 339
--	------------------------	-----------------------------	---

RNAV (GPS) RWY 20

MOUNTAIN VILLAGE (MOU) (PAMO)

RNP APCH. ▼ For uncompensated Baro-VNAV systems, LNAV/VNAV NA below -22°C or above 54°C.	MISSED APPROACH: Climb to 740 then climbing right turn to 3000 direct AGEPE and hold, continue climb-in-hold to 3000.
---	---

AWOS-3P 118.35	ANCHORAGE CENTER 124.0	CTAF 122.9
--------------------------	----------------------------------	----------------------



CATEGORY	A	B	C	D
LPV DA		539-1	200 (200-1)	
LNAV/VNAV DA		589-1	250 (300-1)	
LNAV MDA		600-1	261 (300-1)	
CIRCLING	700-1 361 (400-1)	840-1 501 (600-1)	840-1½ 501 (600-1½)	900-2 561 (600-2)

MIRL Rwy 2-20
REIL Rws 2 and 20