

NDB/DME LUR Chan 20 (V)	APCH CRS 235°	Rwy/Idg THRE Appt Elev	4800 N/A 14
----------------------------	------------------	------------------------------	-------------------

[USAF]

CAPE LISBURNE (RRS) (PALU)

▼ * Circling not authorized S of Rwy 9-27.
Night operations not authorized.

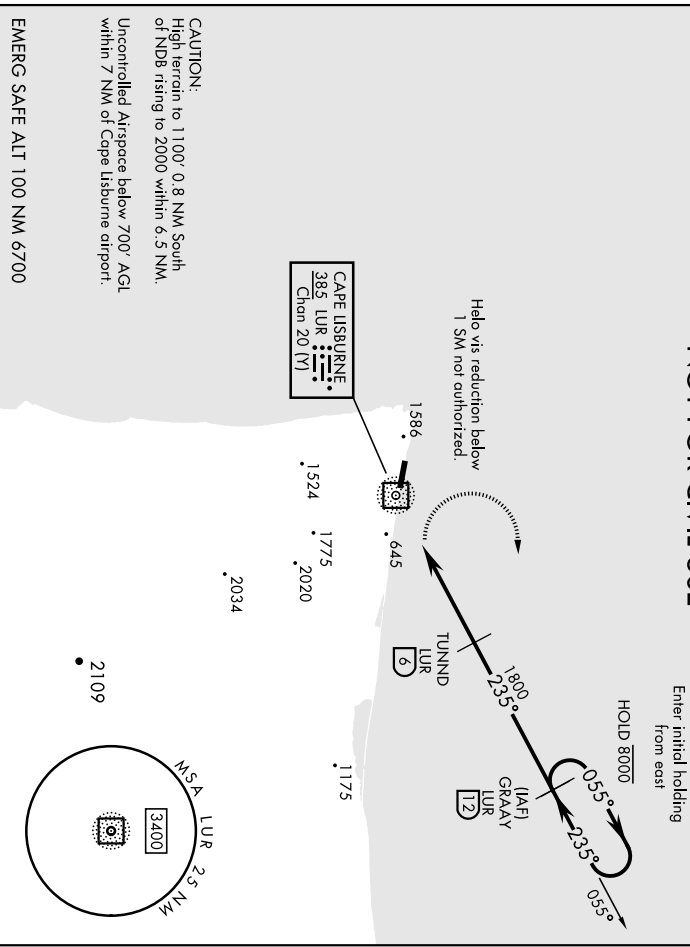
MISSED APPROACH: Climbing right turn to 3200, intercept LUR 055° bearing to GRAAY and hold.

ANCHORAGE CENTER APP/DEP CON
119.65 363.25

KOTZEBUE RADIO
122.3

CIAF
126.2 0

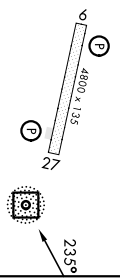
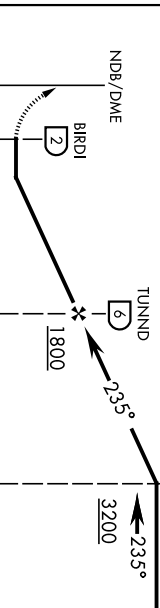
**MILITARY CERTIFIED
AIRCRAFTS OR AUTHORIZED
CONTRACT AIRCRAFT ONLY
NOT FOR CIVIL USE**



3200 GRAAY LUR 12	055° LUR
----------------------------	-------------

One Min
Holding Pattern
GRAAY
12

ELEV 14



CATEGORY	A	B	C	D
CRCLING*	1320-3	1306	(1400-3)	NA

HIRL Rwy 9-27
REL Rwy 9 and 27
TDZL Rwy 9 and 27

CAPE LISBURNE, ALASKA
Amdt 2 30NOV23

68° 53' N - 166° 07' W

CAPE LISBURNE (RRS) (PALU)
NDB/DME-A

RNAV (GPS) RWY 27

[USA#]

CAPE LISBURNE (RRS) (PALU)

ARCH CRS	Rwy Idg	4800
258°	THR#	14
	Appt Elev	14

RNP APCH - GPS

▼ * Circling not authorized S of runway 9-27
Night operators not authorized.

MISSED APPROACH: (Do not exceed 220 KIAS until turn completion).
Climbing right turn to 3200 direct TAKMEE and hold.

ANCHORAGE CENTER/DEP CON
119.65 363.25

KOTZEBUE RADIO
122.3

CTAF
126.2 0

MILITARY CERTIFIED AIRCRAFT OR AUTHORIZED CONTRACT AIRCRAFT ONLY

HOLD 8000



NOT FOR CIVIL USE

Helio vis reduction below 1 SM not authorized.
Uncontrolled Airspace below 700' AGL
within 7 NM of Cape Lisburne airpt.

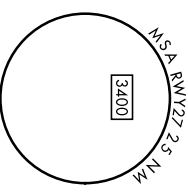
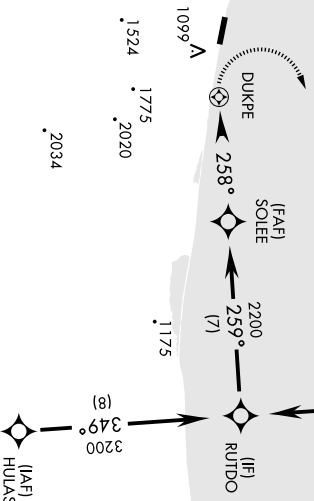
Unit weather equipment,
168' MSL, 278' from hld,
19' right of course.

Terrain 630' MSL,
1.88 NM from hld,
11.59' left of course.

Terrain 31' MSL,
200' from hld,
200' left of course.

Terrain 30' MSL,
244' from hld,
172' left of course.

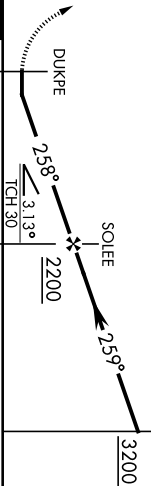
Terrain 597' MSL,
1.91 NM from hld,
1118' left of course.



ELEV	14	THRE	14
------	----	------	----

EMERG SAFE ALTI 100 NM 6700

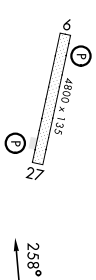
3200	TAKMEE	VGSI and descent angles not coincident	RUTDO
		VGSI Angle 3.00/TCH 241.	



CATEGORY	A	B	C	D
----------	---	---	---	---

LNAV MDA	1320-2 1/2 1306 (1400-2 1/4)	1320-3 1306 (1400-3)	1320-3 1306 (1400-3)	NOT AUTHORIZED
----------	------------------------------	----------------------	----------------------	----------------

◻ CIRCLING *	1320-2 1/2 1306 (1400-2 1/4)	1320-3 1306 (1400-3)	NOT AUTHORIZED
---------------------	------------------------------	----------------------	----------------



HIRL Rwy 9-27 **0**
REIL Rwy 9 and 27
TDZL Rwy 9 and 27 **0**

CAPE LISBURNE, ALASKA

68° 53' N - 166° 07' W

CAPE LISBURNE (RRS) (PALU)

RNAV (GPS) RWY 27

Amch 1 30NOV23