

WAAS CH 93514 W27A	APP CRS 272°	Rwy Idg 3401 TDZE 238 Apt Elev 244
--	------------------------	---

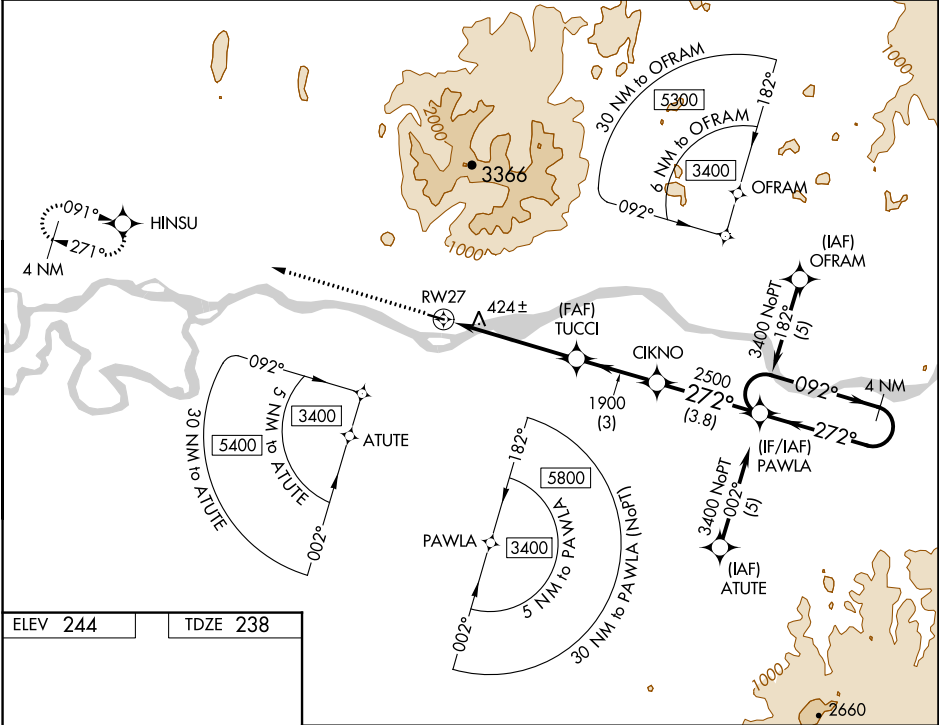
RNAV (GPS) RWY 27

CHUATHBALUK (9A3) (PACH)

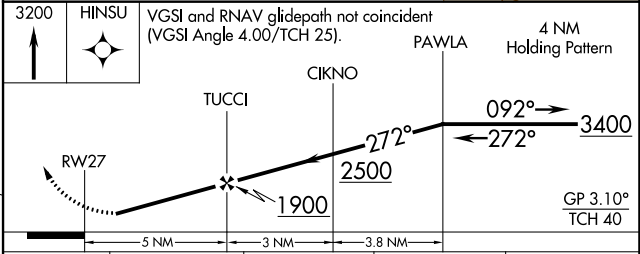
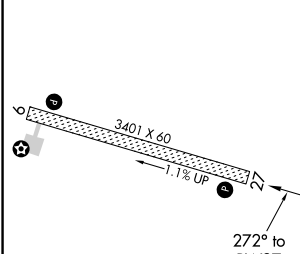
⚠ Circling NA north of Rwy 9-27. DME/DME RNP-0.3 NA. Visibility reduction by helicopters NA. Use Aniak altimeter setting; when not received, use Kalskag altimeter setting and increase all DA 58 feet and MDA 60 feet and increase LNAV and Circling Cats A and C visibility ¼ mile.

MISSED APPROACH: Climb to 3200 direct HINSU and hold.

ANCHORAGE CENTER 118.15 251.05	CTAF 122.9
--	----------------------



ELEV 244	TDZE 238
----------	----------



CATEGORY	A	B	C	D
LPV DA	759-2 521 (600-2)			NA
LNAV MDA	1100-1 862 (900-1)	1100-1¼ 862 (900-1¼)	1100-2½ 862 (900-2½)	NA
CIRCLING	1100-1 856 (900-1)	1100-1¼ 856 (900-1¼)	1100-2½ 856 (900-2½)	NA

MIRL Rwy 9-27 **Ⓛ**
REIL Rwy 9 and 27 **Ⓛ**

AK, 25 JAN 2024 to 21 MAR 2024

AK, 25 JAN 2024 to 21 MAR 2024

WAAS CH 48814 W09A	APP CRS 091°	Rwy Idg TDZE Apt Elev	3401 244 244
--	------------------------	-----------------------------	---

RNAV (GPS) RWY 9

CHUATHBALUK (9A3) (PACH)

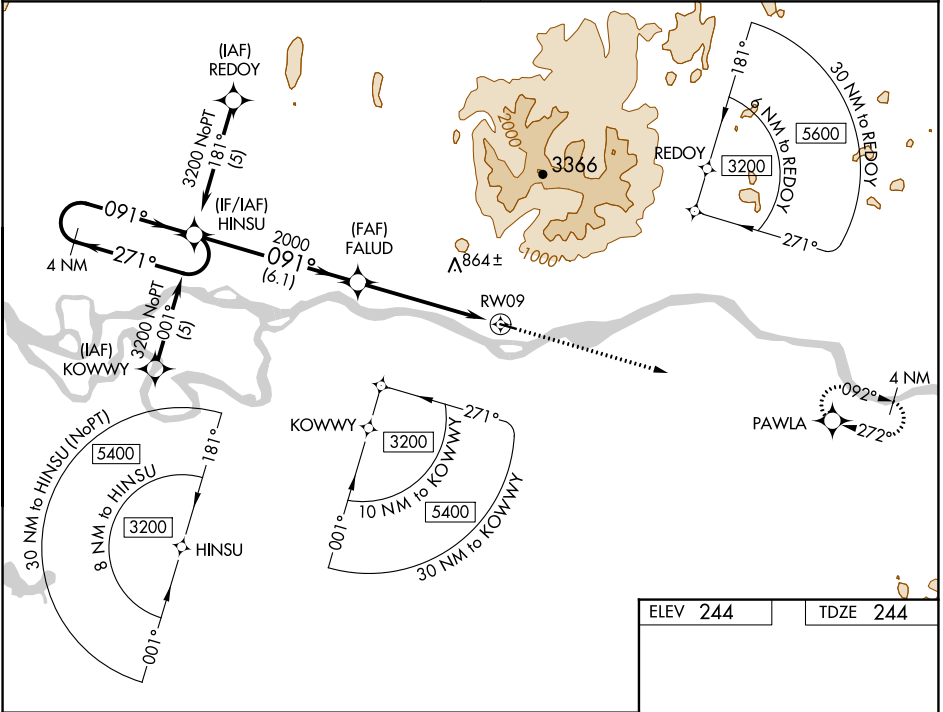
NA
-32°C

Circling NA north of Rwy 9-27. DME/DME RNP- 0.3 NA. Visibility reduction by helicopters NA. Use Aniak altimeter setting; when not received, use Kalskag altimeter setting and increase all DA 58 feet and MDA 60 feet and increase LPV all Cats visibility ¼ mile, and increase LNAV and circling Cat C visibility ¼ mile.

MISSED APPROACH: Climb to 3400 direct PAWLA and hold.

ANCHORAGE CENTER
118.15 251.05

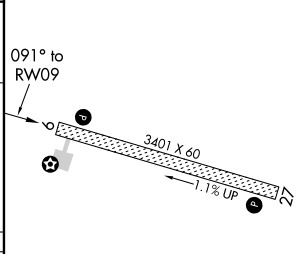
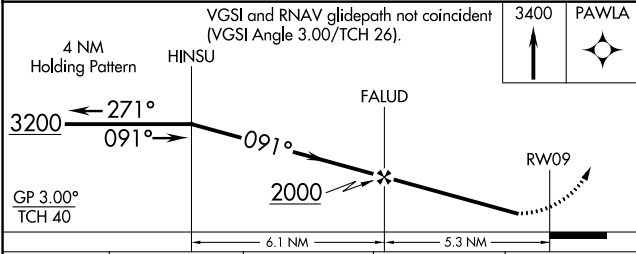
CTAF
122.9



AK, 25 JAN 2024 to 21 MAR 2024

AK, 25 JAN 2024 to 21 MAR 2024

ELEV 244	TDZE 244
----------	----------



CATEGORY	A	B	C	D
LPV DA	652-1½ 408 (500-1½)			NA
LNAV MDA	1000-1 756 (800-1)	1000-1¼ 756 (800-1¼)	1000-2¼ 756 (800-2¼)	NA
CIRCLING	1000-1 756 (800-1)	1000-1¼ 756 (800-1¼)	1000-2¼ 756 (800-2¼)	NA

MIRL Rwy 9-27
REIL Rws 9 and 27